

# College Credit Requirements

More detailed information is in the *URI Undergraduate and Graduate Catalog*, available at high school libraries and guidance offices, or at [www.uri.edu/catalog](http://www.uri.edu/catalog).

## *Prelaw, Preveterinary, Pre dental, and Premedical Preparation*

The Association of American Law Schools and the Law School Admissions Council recommend that students interested in preparing for professional study in law choose their majors according to their own intellectual interests, while striving to attain “accomplishment in understanding, the capacity to think for oneself, and the ability to express one’s thoughts with clarity and force.” Some of the more popular choices in recent years have included history, political science, English, business, and coastal and marine policy and management. Pre-law advisors work with you on an individual basis to plan an appropriate course of study.

Most students interested in preparing for a career in medicine or dentistry major in animal science and technology, biological sciences, microbiology, clinical laboratory science, chemistry, pharmacy, nutrition and dietetics, or another health-related science. You can pursue any degree program as long as it includes the courses required by the dental or medical school in which you’re interested. URI’s Health Professions Advisory Committee helps you plan a course of study.

## College of Arts and Sciences

**Bachelor of Arts** A typical first semester for a freshman includes:

- 3 credits in history, philosophy, or social science
- 3 credits in art, music, or literature
- 3 credits in mathematics or natural science
- 3 credits in a foreign language
- 3 credits in anticipated major



**Bachelor of Science** A typical first semester for a freshman includes:

- 4 credits in your anticipated major
- 4 credits in a related science
- 3 or 4 credits of introductory calculus
- 3 credits in social science, music, art, literature, history, or philosophy
- 3 credits in English communication

**Bachelor of Fine Arts** degrees are offered in both art and theatre.

**Bachelor of Music** degree programs prepare you for a career in music performance, music composition, or music education in elementary or secondary schools. A successful audition is required for admittance into all music degree programs. Call the Department of Music at 401-874-2431 for audition dates and requirements.



### ★ Outstanding Alumni

**Christiane Amanpour '83**, CNN global news correspondent

**Peter Bassi '70**, chairman, Yum! Restaurants International

**Nancy McKinstry '80**, chairman, Wolters Kluwer

**Lincoln Almond '59**, governor of Rhode Island 1995–2002

**Carol Makovich '75**, vice president, Worldwide Media Relations, IBM

**Cuttino Mobley '98**, NBA basketball player, Houston Rockets

**Richard Beaupre '62**, CEO, Chemart

**Kwok Yeung, Ph.D. '79**, vice president, Research & Development, Bayer Corporation

**John Geddes '74**, managing editor, New York Times

**Dr. Christopher Savoie '92**, chairman & CEO, Gene Networks, Inc.

**Maureen Flanagan '82**, executive director, Media Relations, Verizon

**Fred Joyal '79**, CEO, 1-800-DENTIST

**The Honorable Mary Lisi '72**, U.S. District Court, District of Rhode Island

**The Honorable Daniel Procaccini '74**, District Court for the State of Rhode Island

**Don Bousquet '73**, renowned cartoonist

**Ann Hood '77**, best-selling novelist

### Army Reserve Officer Training Corps (ROTC)

The Department of Military Science offers a program leading to an officer’s commission in the U.S. Army. Officers may choose to serve full-time on active duty or part-time in the National Guard or U.S. Army Reserve. Enrollment in any military science course at URI also allows you to compete for off-campus training at the following U.S. Army schools: Airborne, Air Assault, Northern Warfare School, and Nurse Summer Training in Europe or the United States.

For more information, call the URI ROTC Office at 401-874-2385. URI’s ROTC program does not currently conform to the University’s nondiscrimination policy on sexual orientation, but this does not preclude any student from participating in the first two years of the program.



## College of Business Administration

A typical first semester for a freshman includes:

- 3 credits in introductory business analysis and application
- 3 credits in a foreign language or culture cluster
- 3 credits in natural science
- 3 credits in art, music, or literature
- a free elective of your choice

In your freshman and sophomore years, you will be enrolled in University College and will be assigned a business advisor. Half of your courses will be in areas such as liberal studies, languages, and the sciences. During your sophomore year, you will be considered for admission to the College of Business Administration. Requirements include a 2.4 overall GPA and a 2.4 average in the lower division business core.

### ★ Outstanding Alumni

- ★ **Richard J. "Dick" Harrington '73**, chief executive officer, The Thomson Corporation
- ★ **Alfred J. Verrecchia '67, M.B.A. '72**, president and chief executive officer, Hasbro, Inc.
- ★ **Wendy Field '74**, executive director, UBS Warburg LLC
- ★ **David Buckanavage '80**, president, Sovereign Pacific Equity, Inc.
- ★ **Bruce S. Sherman '69**, chief executive officer, Private Capital Management

**Ballentine Hall, home to the College of Business Administration**, has been transformed into a cutting-edge facility equipped with state-of-the-art technology to prepare students for careers in the 21st century. Ballentine Hall now includes:

- the Bruce S. Sherman Trading Room, a real-world finance trading facility
- executive-style classrooms with multi-media capabilities
- a media lab for research and student projects
- a computer classroom/laboratory
- seminar and study spaces to enhance student/faculty interaction
- a career services resource area and a student internship office
- computer access in each classroom and hookups for laptops
- undergraduate student lounge
- outreach centers for working with the business community

## College of Engineering

A typical first semester for a freshman includes:

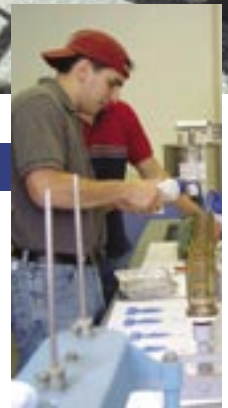
- 4 credits in general chemistry
- 4 credits in introductory calculus with analytic geometry
- 4 credits in elementary physics
- 1 credit in foundations of engineering
- 3 credits in General Education

By choosing electives carefully, you can emphasize an area of interest within your major, or take advantage of the ocean engineering option offered in the chemical engineering degree program.

**Cooperative Education Program** Juniors and seniors in all engineering degree programs can participate in the college's Student Internship Program, which offers valuable part- or full-time work experience before graduation.

**International Engineering Dual Degree Program** In the college's five-year International Engineering Program, students earn two bachelor's degrees, one in engineering and one in a foreign language (French, Spanish, or German). They also spend six months abroad in a professional internship in Europe or Latin America.

**Engineering and M.B.A. Program** This five-year program allows students to earn a B.S. in engineering and a master's in business administration. Students who have a 3.00 quality point average or better can enroll during their senior year upon successful completion of the Graduate Management Admissions Test.



### ★ Outstanding Alumni

- ★ **David Bellino '80**, film director and multimedia producer, Silvervisions Entertainment Group
- ★ **Deirdre Crowley '91**, department manager, Hoechst Celanese

## College of Human Science and Services

The College of Human Science and Services prepares graduates to help individuals and groups solve the human problems encountered in contemporary society. Visit [www.uri.edu/hss](http://www.uri.edu/hss) for more information.

### Textiles, Fashion Merchandising, and Design; Textile Marketing

These majors address the needs of those interested in the textile and fashion business—designing, buying, selling, and manufacturing. Most students complete an internship or study abroad (typically in England or Italy) to complement their studies.

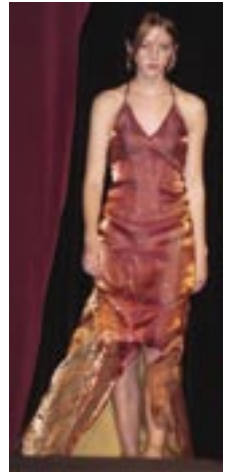
**Teacher Education** Normally, during your sophomore year, you apply to the teacher education program through the Office of Teacher Education. Completion of the early childhood education program leads to a teaching certificate for nursery school to Grade 2, while the elementary education program leads to a teaching certificate for Grades 1 to 6. The secondary education program leads to a teaching certificate for Grades 7 to 12. Courses for middle-level endorsement are available.

**Speech–Language Pathology or Audiology** If you major in communicative disorders, you can apply to an accelerated master's degree program in either speech–language pathology or audiology after your junior year. Once accepted into either program, you can pursue graduate-level course work and clinical practicum in your senior year and complete a master's degree in one additional year of full-time graduate study.

**Human Development and Family Studies** The HDF major examines development from birth to death and how family, school, and community settings contribute to the quality of life. A unique feature of this major is students' ongoing involvement in professional settings across the curriculum from early field work to the senior internship.

**Kinesiology** This major is designed for students who plan to pursue careers in the broad fields of health, physical education, and exercise science. Students can prepare for certification as K–12 physical education teachers with additional study opportunities in adapted physical education and health. For those interested in non-teaching careers, options are offered in health fitness, exercise science, and general study.

**Physical Therapy** Depending on your undergraduate major and the sequence of courses you complete, you may be able to apply for early admission to the master's program in physical therapy during your junior year through URI's Early Contingent Admissions process. Admission to this program is highly competitive.



**Designing Women** URI's first Spring Splash recognized the accomplishments of alumni and showcased student designs worn by student models. The event raised more than \$15,000 for scholarships, guest speakers, and field trips to benefit the Textiles, Fashion Merchandising, and Design department. Jan Penswick (middle) modeled the first-prize winner, designed by May Zee Kue, while Jenna Casey modeled her own creation, an iridescent purple silk dress.



## College of the Environment and Life Sciences

The College of the Environment and Life Sciences offers students the applied research and field and laboratory work opportunities needed for the 21st century. Take advantage of the numerous internships and research fellowships and get involved as early as your freshman year!

The college's majors focus on the marine, environmental, life sciences, health, and preprofessional fields. Although each major carries somewhat different requirements, a typical first semester for a freshman includes:

- 3 credits in an introductory course in your major
- 4 credits in general biology and/or chemistry
- 3 credits in English communication
- 3 General Education credits in social science, fine arts and literature, letters, or foreign language and culture
- 3 credits in mathematics for specific majors

Through specific majors, students can earn national professional certification in clinical laboratory science, dietetics, wildlife biology, and landscape architecture. The preveterinary option in the animal science and technology major prepares you for admission to veterinary medicine, medicine, and graduate schools, or for a career in the life sciences. The microbiology major provides a competitive platform for admission to medical school. Students in the coastal and marine policy and management major are well prepared to enter law school.

Because of the college's strong academics, award-winning professors, and commitment to experiential learning through internships and research fellowships, graduates from all majors are highly competitive in the job market and as applicants to graduate and professional schools. The college's graduates have advanced to leadership positions throughout the nation.



**Commemorative Conservatory Friends and colleagues established the Matthew J. Horridge Conservatory after the talented horticulturist died unexpectedly before graduation. The conservatory, inspired by Matt, features a desert bed with cacti; a tropical bed and hanging garden of ferns and orchids; and an edible food bed with coffee, mangoes, figs, bananas, lemons, oranges, peppers, and passionflower. The garden also features winding paths, a fish pond, and a meditation bench.**

## College of Nursing



A typical first semester for a freshman includes:

- 3 credits in introductory chemistry
- 3 credits in English communication
- 4 credits in human anatomy
- 3 credits in general sociology

After completion of 37–50 credits, students may apply for transfer to the college.

A general education in the humanities, and the social, physical, and biological sciences, combined with professional nursing courses, leads to a B.S. in nursing, and prepares you for the national examination for licensing as a registered nurse.

**Registered Nurse Students with an Associate's Degree or Diploma** If you're a registered nurse who has completed a diploma or associate's degree program, you can apply as a transfer student to URI's bachelor's degree program in nursing. You can transfer a maximum of 32 credits for prior nursing course work. In addition, you can earn credit for General Education courses through successful completion of CLEP exams. As a registered nurse, you can also begin study for a master's degree during the final semesters of your bachelor's program.

**Navy Medical Enlisted Commissioning Program** If you have previous undergraduate credit and are currently enlisted in the U.S. Navy, you can apply to this program to complete your bachelor's degree in nursing in 36 months.

### A Heartening Experience

Aimee Guerra '06 gained hands-on experience caring for patients in her URI clinical practicum at Kent County Memorial Hospital in Warwick, R.I.



**Notable Nurses** College of Nursing graduates commonly assume leadership roles in their profession. Most recently, Marie Ghazal '77 (right), vice president of nursing and patient care at the Providence Community Health Centers Inc., was honored as the URI College of Nursing Alumna of the Year for 2004. Dean Dayle Joseph did the honors.

## College of Pharmacy

A typical first semester for a freshman includes:

- 4 credits in general zoology
- 3 credits in English communication
- 4 credits in general chemistry
- 3 credits in general electives

In your freshman and sophomore years, you'll have dual registration in the College of Pharmacy and University College. Students must earn a minimum quality point average of 2.00 overall and 2.20 in all professional courses in order to qualify for graduation.

At URI, you'll combine course work in the humanities and social sciences with a solid foundation in pharmacy and the basic sciences. The clinical portion of the program will provide you with hands-on experience at hospitals, nursing homes, governmental institutions, home health care settings, pharmacy benefits management companies, and community pharmacies. Summers provide additional opportunities to complete required internship training.



**Transfer to the College of Pharmacy** Transfer admission to the College of Pharmacy is highly competitive and limited to currently enrolled URI students preparing to begin the junior year. Preference is given to students who have completed the science courses equivalent to those required in the prepharmacy program, including: General Chemistry I and II, Calculus I, Zoology I and II, Anatomy, Physiology, Organic Chemistry I and II, Microbiology, Biochemistry, Biostatistics, and Microeconomics.

### Outstanding Alumni

**Paul Pierpaoli '60**, director of pharmacy, Rush-Presbyterian St. Luke's Medical Center

**Grace "Micky" Jerome '76**, associate director, pharmacy, John Deere Health Care

**Joan Lausier '71**, associate dean, URI College of Pharmacy

**Kenneth Suarez '72**, associate dean for research, Chicago College of Osteopathic Medicine

**Thomas Ryan '75**, chairman and CEO, CVS

**Paul Hastings '84**, president, therapeutics division, Genzyme Corporation

### Prescription for Success

URI's College of Pharmacy is unique in the East, where pharmacy is generally taught in urban areas. Students participate in specialty externships and clerkships at selected hospital and community pharmacies in Rhode Island and New England.