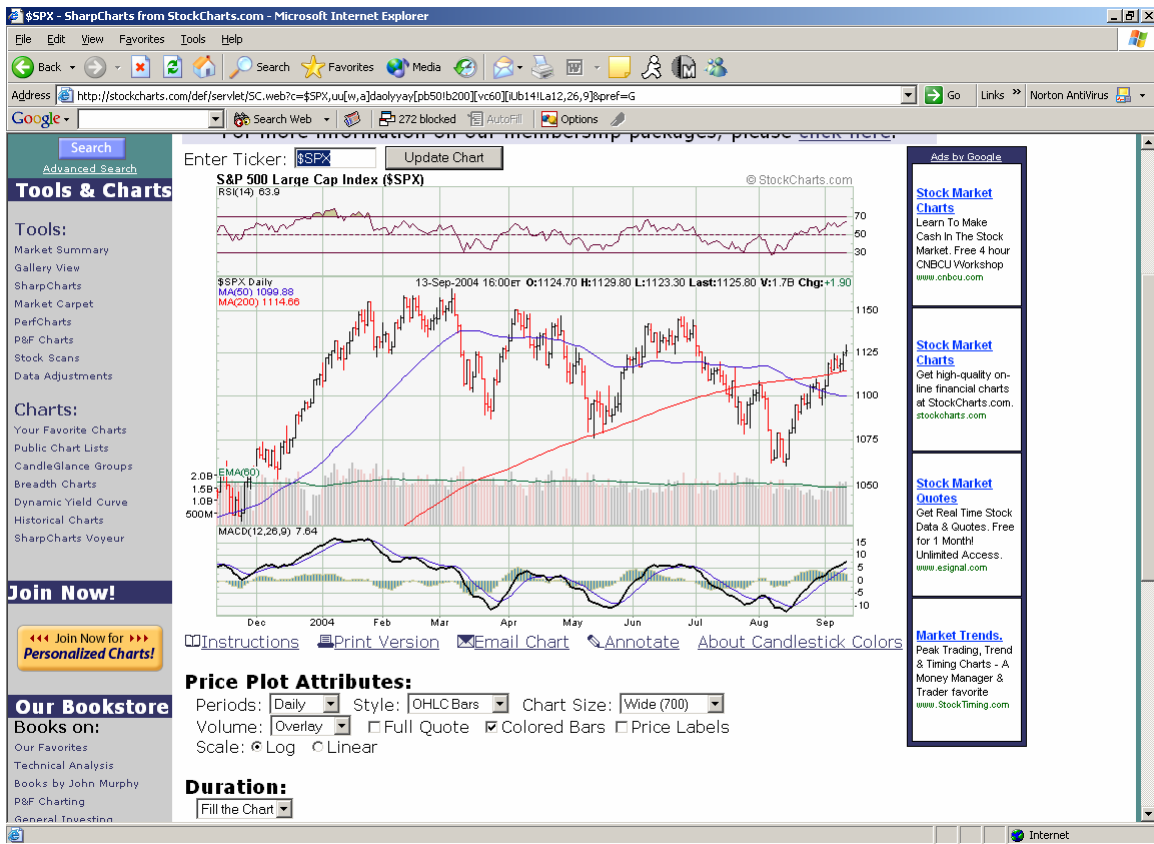




3. You need to change several settings. By default this displays candlestick charts (which I *HIGHLY* recommend that you learn some day). Change this to **OHLC Bars** (consistent with STIKKY STOCK CHARTS), choose Chart Size: WIDE (700). Select **UPDATE CHART**. The result is:



- Don't worry about the other choices below (Moving Averages) for now. On the bottom of the page (can't see it above), we have the tool that enables us to add trend lines, etc. Select **ADD ANNOTATIONS**. A Java image appears. Examine the buttons on the top of the diagram and experiment with these. For now, I will just go through creating a trend line.



- Second from the top left is the line drawing tool (a horizontal line figure) which is automatically selected when you get to this point. Left click the mouse key at the point you wish to begin your trend line and drag the mouse to the point you wish to end the line. Here there is a downward trend starting in March.



- The arrow (top left) can select the line and move it if you are off a bit. To print the chart, hold down **ALT** then press **Print Scr**. Paste this into a Word document or edit with an image program.

## SYMBOLS OF INTEREST FOR THIS COURSE:

<b>\$INDU</b>	Dow Jones Industrial Average
<b>\$COMPQ</b>	NASDAQ Average
<b>\$SPX</b>	S&P 500 Index
<b>\$TNX</b>	10-Year Government Bond Yield (divide this by 10)
<b>IEF</b>	7-10 Year Treasury Bond Fund iShares
<b>SHY</b>	1-3 Year Treasury Bond Fund iShares
<b>\$USD</b>	US Dollar Index
<b>\$XEU</b>	US Dollar – Euro Index
<b>\$XJY</b>	Japanese Yen Index
<b>\$CDW</b>	Canadian Dollar Index
<b>\$CRB</b>	CRB Commodity Index
<b>\$GOLD</b>	Gold Index
<b>\$WTIC</b>	Crude Oil Futures Prices
<b>\$CYC</b>	Cyclicals Index – Morgan Stanley
<b>TIP</b>	Treasury Indexed Bonds (iShares Lehman TIPS Bond Fund)
<b>TLT</b>	20+ year Bond iShares
<b>\$UST</b>	10-year Treasury Note Price
<b>XLE</b>	Energy Select Sector SPDR
<b>\$XAU</b>	Gold and Silver Index
<b>GLD</b>	StreetTracks Gold Trust Shares
<b>XLP</b>	Consumer Staples Select Sector SPDR
<b>IYK</b>	Consumer Non-Cyclicals Index (AMEX)
<b>\$SOX</b>	Semiconductor Index
<b>XLB</b>	Materials Select SPDR

**NOTE:** Indexes, etc. have symbols that begin with “\$” while regular stocks do not have the dollar sign (ex.: IBM; GE).

## CHANGING TIME FRAME AND/OR FREQUENCY

In the section: **Price Plot Attributes** under the graph, you can change from the default of **Daily** (under periods) to **Weekly**. To alter the time period for the graph, under **Duration**, move from **Fill the Chart** to the desired time frame (ex: **1 Year**). When done, press **UPDATE CHART**. Once this is done, you can enter the relevant trend lines for the new graph in the same way as outlined above.