

Office of
Student Learning, Outcomes Assessment, and Accreditation



TrueOutcomes is a program assessment tool at URI

TrueOutcomes is a program that will allow you to:

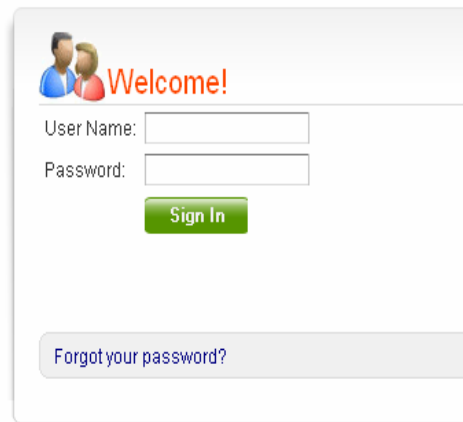
- Submit assignments
- Review instructor evaluations
- Reflect upon and document your learning and development as a student
- Create a professional portfolio of your best work

To find TrueOutcomes go to the url:

- <https://trueoutcomes.uri.edu>
- no other site will be correct
- <https://trueoutcomes.uri.edu>
- Use your URI webmail name and password to login



TrueOutcomes is a Cengage Learning company. Our goal is to provide educators and students with the most innovative, targeted tools and courses for teaching and learning.

A user login form with a 'Welcome!' message, 'User Name:' and 'Password:' labels, input fields, a 'Sign In' button, and a 'Forgot your password?' link.

Welcome!

User Name:

Password:

[Forgot your password?](#)

Trouble logging in?

- Double check that your webmail name and password are correctly entered

For login in failures contact the Help Desk

- The URI Help Desk:
874-4357 or <http://www.uri.edu/helpdesk/>
- So make sure you have access to TrueOutcomes before you try to submit an assignment at 3am!
- Or try the Help Desk self-help site <http://www.uri.edu/helpdesk/wiki/>

This is how your student home page will look:

trueOUTCOMES.

My Account Help Logout
Abigail Baker, University of Rhode Island
Current View: [Student](#) ▼

SPRING, 2008-09

Home Welcome to TrueOutcomes

My Portfolio This is a system for **accessing and managing** the educational work products you create here at University of Rhode Island. In addition to viewing and submitting activities assigned by your instructor, you also have the ability to create your own electronic portfolio. We hope you will use the portfolio fully, from your first semester through your very first job! It will provide you with a dynamic framework to show and describe to the world, electronically, what you have accomplished while at University of Rhode Island.

Assignments

Survey Areas of Interest

Curriculum **Portfolio** To create, view, or access all of your portfolios, select My Portfolios on the left menu.

Advising **Assignments** To submit assignments, view requirements, or view evaluations, select Assignments from the left menu

Surveys To view or submit surveys, select Surveys from the left menu

University of Rhode Island and TrueOutcomes help you make evidence-based decisions to support our institutional mission for accreditation and continuous improvement.

Some links you might enjoy, but are not yet required. For instance, "My Portfolio", allows you to store academic and professional materials.



trueOUTCOMES.

My Account Help Resume Admin Role
Tara Church, University of Rhode Island

SPRING, 2008-09

Home Welcome to TrueOutcomes

My Portfolio This is a system for **accessing and managing** the educational work products you create here at University of Rhode Island. In addition to viewing and submitting activities assigned by your instructor, you also have the ability to create your own electronic portfolio. We hope you will use the portfolio fully, from your first semester through your very first job! It will provide you with a dynamic framework to show and describe to the world, electronically, what you have accomplished while at University of Rhode Island.

Working Portfolio
Gateway Portfolio
Showcase Portfolio
My Resume
Quest Log

Areas of Interest

Portfolio To create, view, or access all of your portfolios, select My Portfolios on the left menu.

Assignments To submit assignments, view requirements, or view evaluations, select Assignments from the left menu

Surveys To view or submit surveys, select Surveys from the left menu

University of Rhode Island and TrueOutcomes help you make evidence-based decisions to support our institutional mission for accreditation and continuous improvement.

This semester, your work will be done here:
"Assignments."



- Home
- My Portfolio
- Assignments**
- Submit/View
- Submit Review
- Survey
- Curriculum
- Advising

Submit/View Assignments

This page lists your assignments that will be evaluated on-line. Some assignments will be submitted on-line and evaluated on-line, but other assignments, such as oral presentations, will only be evaluated on-line. If there is a Submit link next to an assignment it means it is supposed to be submitted on-line. After you submit an assignment, a link to your submission appears under the "Submit" link. You can review your submission anytime by clicking its link. If your instructor allows a resubmission, you will see "Submit" replaced by "Resubmit". Click on "view requirements" to see how an assignment will be evaluated. After the assignment has been evaluated, the "view evaluation" button allows you to see your evaluation.

Hand in Assignment				
Courses in Spring, 2008-09				
Assignment	Course	Status	Instructor's Attachments	Action
LSC 508 Planning Rubric	LSC508.0200-Intro to Information Sci &Tech	Submission Due by: 25-Apr-2009 2:27pm	view requirements	submit
LSC 508 Database Project	LSC508.0200-Intro to Information Sci &Tech	Submission Due by: 25-Apr-2009 2:34pm	view requirements <ul style="list-style-type: none"> ▪ LSC508 Database Assignment.doc 	submit
EDC I PLAN Assessment	EDC485.0015-Sem In Tchg	Submission Due by: 29-May-2009 1:16pm	view requirements	submit
Informal and Formal Assessment of Learning	EDC485.0015-Sem In Tchg	Submission Due by: 15-May-2009 2:05pm	view requirements	submit

Each assignment will be listed by title.

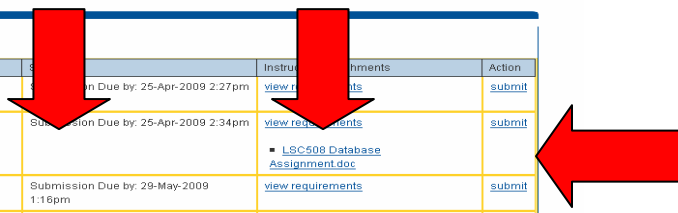
- The due date is listed under **"Status"**.
- The Rubric is found under **"View Requirements"**.
- You will hand in your documents via **"Submit"**.

- Home
- My Portfolio
- Assignments**
- Submit/View
- Submit Review
- Survey
- Curriculum
- Advising

Submit/View Assignments

This page lists your assignments that will be evaluated on-line. Some assignments will be submitted on-line and evaluated on-line, but other assignments, such as oral presentations, will only be evaluated on-line. If there is a Submit link next to an assignment it means it is supposed to be submitted on-line. After you submit an assignment, a link to your submission appears under the "Submit" link. You can review your submission anytime by clicking its link. If your instructor allows a resubmission, you will see "Submit" replaced by "Resubmit". Click on "view requirements" to see how an assignment will be evaluated. After the assignment has been evaluated, the "view evaluation" button allows you to see your evaluation.

Hand in Assignment				
Courses in Spring, 2008-09				
Assignment	Course	Status	Instructor's Attachments	Action
LSC 508 Planning Rubric	LSC508.0200-Intro to Information Sci &Tech	Submission Due by: 25-Apr-2009 2:27pm	view requirements	submit
LSC 508 Database Project	LSC508.0200-Intro to Information Sci &Tech	Submission Due by: 25-Apr-2009 2:34pm	view requirements <ul style="list-style-type: none"> ▪ LSC508 Database Assignment.doc 	submit
EDC I PLAN Assessment	EDC485.0015-Sem In Tchg	Submission Due by: 29-May-2009 1:16pm	view requirements	submit
Informal and Formal Assessment of Learning	EDC485.0015-Sem In Tchg	Submission Due by: 15-May-2009 2:05pm	view requirements	submit



The **"Submit"** option will allow you to add up to 5 documents as your response(s) to the **"Assignment"**.

SPRING, 2008-09

Home
My Portfolio
Assignments
Submit/View
Submit Review
Survey
Curriculum
Advising

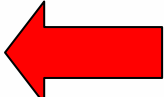
LSC 508 Planning Rubric

Hand in Assignment

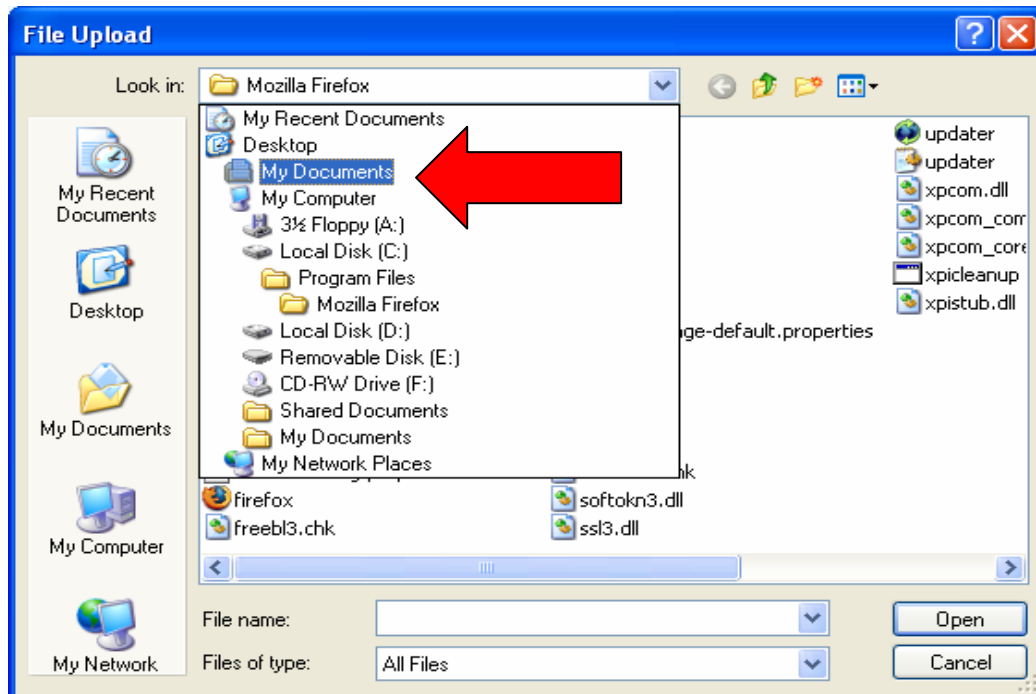
Exhibit Title: LSC 508 Planning Rubric

Exhibit Definition: Planning Assignment Description Planning Assignment as evidence of meeting: GSLIS Educational Outcomes: #4. Technological Knowledge: 4a. Demonstrates comprehension and competence in using information and communication technologies for professional presentations and to assist diverse users to access information resources in a variety of formats. 4b. Understands and can apply the principles of techniques used to continuously track and analyze emerging technologies to recognize relevant innovations. Assignment. Information Theory Project Purpose: To provide an opportunity to solve a real-life problem or issue involving an emerging technology in a library or information services setting using information theory and/or communication theory. You must join a group with no more than four and no less than three other members of the class. As a group, you must describe an information problem or issue involving an emerging technology in a library or information center setting. Once you have described and defined the problem or issue, select a communication or information science theory or model that will be best to help solve the problem. You may use any of the theories or models presented in this class or any others that you find on your own. A rough draft describing your problem or issue, model or theory chosen to help solve the problem, and brief rationale for your selection should be emailed to me by the end of the eighth week of the course. You, along with the other members of your group, will become more familiar with the communication or information science theory or model and present the solution to your problem to the rest of the class using it. Your presentation should provide: a detailed discussion of the problem or issue, an explanation of the emerging technology, a rationale for selecting the theory or model, a description of the theory or model used, a discussion of the solution to the problem or issue, an appropriate bibliography or list of references used, and any other information that you feel is appropriate. The presentation will be displayed in the form of a web site. One member of the group will post the site on his or her site. Each other member of your group will provide a link from their personal website to the URL for your project by the date due. Upon completion of the project (due by end of the eleventh week of the course), each member of the group should send an email to me with a grade for the participation of each member of the group including your self. The grade should be based on 5 points where: 5=outstanding, contributions couldn't have been better, 4=very good, contributions were better than most, 3=acceptable, about average contributions; 2=below average, didn't contribute as much as most, 1=poor, contributed very little, 0=unacceptable, contributed nothing. No one in the group will receive a grade for this assignment until all members of the group have submitted a grade using the above scale for all members of the group including her self or him self.

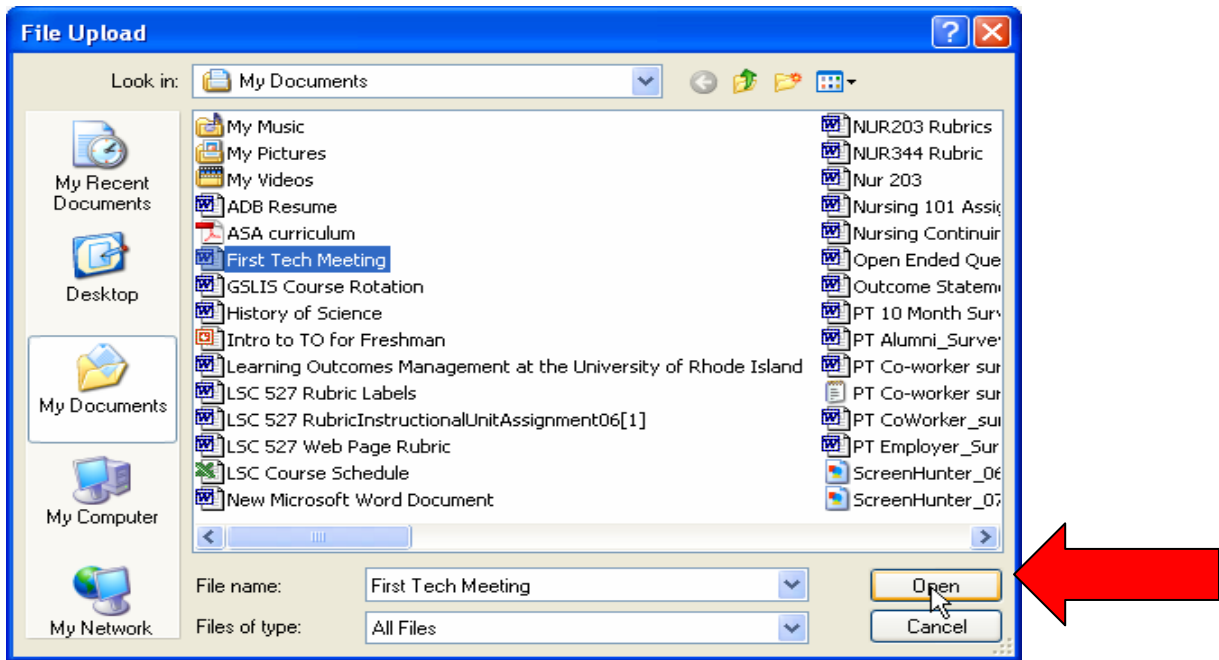
File 1
File 2
File 3
File 4
File 5



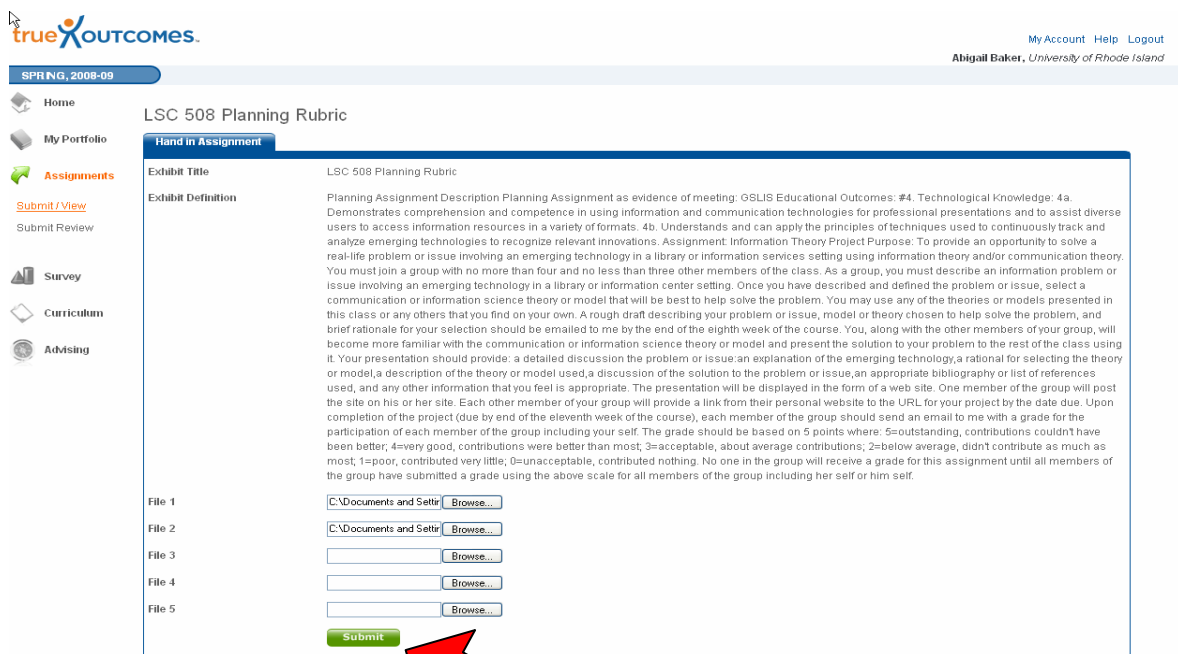
Search your computer for your documents as you would for an e-mail attachment.



Once you find your document, clicking **“Open”** will attach it to the **“Submit”** box.



Once all your responses are added, **“Submit”** your assignment.



The **“Resubmit”** button will delete the existing document so that you may **“Submit”** a new version of the assignment up until the due date.

SPRING, 2008-09

2008-09: Spring

- Home
- My Portfolio
- Assignments
- [Submit/View](#)
- Submit Review
- Survey
- Curriculum
- Advising

LSC 508 Planning Rubric

This page lists your assignments that will be evaluated on-line. Some assignments will be submitted on-line and evaluated on-line, but other assignments, such as oral presentations, will only be evaluated on-line. If there is a Submit link next to an assignment it means it is supposed to be submitted on-line. After you submit an assignment, a link to your submission appears under the "Submit" link. You can review your submission anytime by clicking its link. If your instructor allows a resubmission, you will see "Submit" replaced by "Resubmit". Click on "view requirements" to see how an assignment will be evaluated. After the assignment has been evaluated, the "view evaluation" button allows you to see your evaluation.

Hand in Assignment

Submission of LSC 508 Planning Rubric has been created.

Courses in Spring, 2008-09

Assignment	Course	Status	Instructor's Attachments	Action
LSC 508 Planning Rubric	LSC508.0200-Intro to Information Sci &Tech	Evaluation Pending, Submitted 28-Jan-2009 4:17pm	view requirements	resubmit 1. Hypothermia.doc 2. LSC 505 Syllabus.pdf
LSC 508 Database Project	LSC508.0200-Intro to Information Sci &Tech	Submission Due by: 25-Apr-2009 2:34pm	view requirements ▪ LSC508 Database Assignment.doc	submit
EDC I PLAN Assessment	EDC485.0015-Sem In Tchg	Submission Due by: 29-May-2009 1:16pm	view requirements	submit
Informal and Formal Assessment of Learning	EDC485.0015-Sem In Tchg	Submission Due by: 15-May-2009 2:05pm	view requirements	submit



Finally, you will see your grade in the **“View Evaluation”** tab once it is completed.

SPRING, 2008-09

2008-09: Spring

- Home
- My Portfolio
- Assignments
- [Submit/View](#)
- Submit Review
- Survey
- Curriculum
- Advising

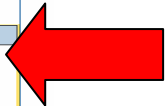
Submit/View Assignments

This page lists your assignments that will be evaluated on-line. Some assignments will be submitted on-line and evaluated on-line, but other assignments, such as oral presentations, will only be evaluated on-line. If there is a Submit link next to an assignment it means it is supposed to be submitted on-line. After you submit an assignment, a link to your submission appears under the "Submit" link. You can review your submission anytime by clicking its link. If your instructor allows a resubmission, you will see "Submit" replaced by "Resubmit". Click on "view requirements" to see how an assignment will be evaluated. After the assignment has been evaluated, the "view evaluation" button allows you to see your evaluation.

Hand in Assignment

Courses in Spring, 2008-09

Assignment	Course	Status	Instructor's Attachments	Action
LSC 508 Planning Rubric	LSC508.0200-Intro to Information Sci &Tech	Evaluated, Submitted 28-Jan-2009 4:17pm	view requirements	view evaluation 1. Hypothermia.doc 2. LSC 505 Syllabus.pdf
LSC 508 Database Project	LSC508.0200-Intro to Information Sci &Tech	Submission Due by: 25-Apr-2009 2:34pm	view requirements ▪ LSC508 Database Assignment.doc	submit
EDC I PLAN Assessment	EDC485.0015-Sem In Tchg	Submission Due by: 29-May-2009 1:16pm	view requirements	submit
Informal and Formal Assessment of Learning	EDC485.0015-Sem In Tchg	Submission Due by: 15-May-2009 2:05pm	view requirements	submit



Your Evaluation will show points achieved for each rubric element as well as comments on your work.

- Home
- My Portfolio**
- Working Portfolio
- Gateway Portfolio
- Showcase Portfolio
- My Resume
- Guest Log
- Assignments
- Survey
- Curriculum
- Advising

This page displays a teachers evaluation of your work along with any comments.

Criteria	Evaluator	
	Instructor	Mean
Describe problem or issue. Describe the emerging technology. (RIBTS 1.1, 1.2, 2.1, 2.4, 2.7, 2.5, 5.2, 5.4, 5.5, 8, 10.3)	5.00	5.00
Provide a rationale for the information theory and/or communications theory selected to solve the problem. (RIBTS 1.1, 1.2, 2.5, 2.7, 5.2, 5.4, 8, 10.3)	5.00	5.00
Describe the information science and/or communication theory used. (RIBTS 8)	5.00	5.00
Discuss the solution to the problem or issue. (RIBTS #1,1, 1.2, 2.1, 2.4, 2.6, 2.7, 5.4, 5.5, 8, 10.3)	5.00	5.00
Provide a bibliography or reference list for the sources used. (RIBTS # 2.3)	5.00	5.00
Group collaboration (RIBTS # 7, 8)	5.00	5.00
Presentation of the project (RIBTS 2, 4)	5.00	5.00
Website design (RIBTS #2, 4).	5.00	5.00

Evaluator	Criteria	Comment
Instructor	Group collaboration (RIBTS # 7, 8)	Excitingly
Instructor	Presentation of the project (RIBTS 2, 4)	Superb
Instructor	Website design (RIBTS #2, 4).	Fabulous



We hope you enjoy using TrueOutcomes at URI:

- A paperless environment,
- Electronic storage of data.
- We want to thank you again for being among the first URI students to use our new e-portfolio system.
- Any comments on the program itself?

Contact: abigail_baker@mail.uri.edu