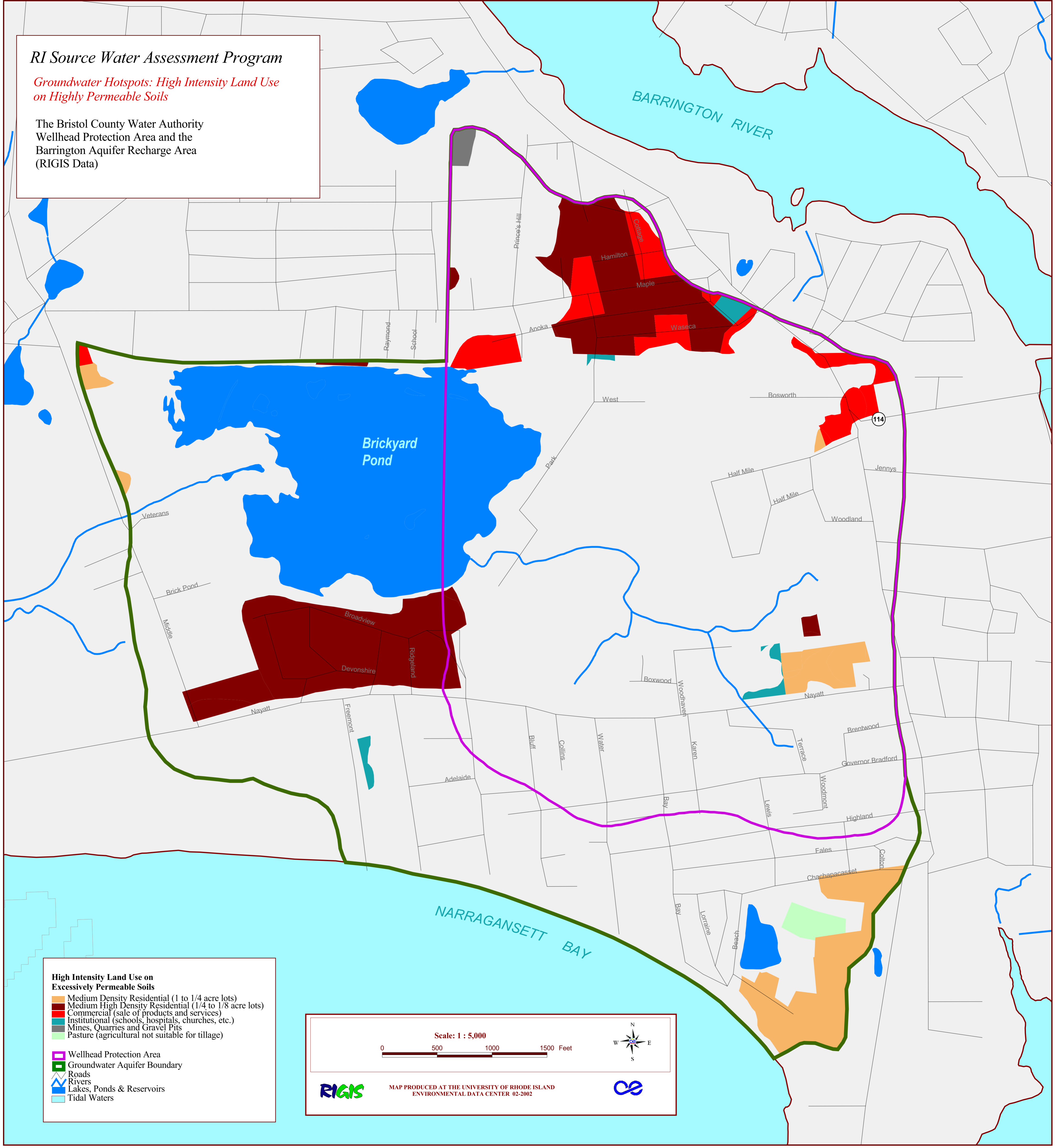


# RI Source Water Assessment Program

*Groundwater Hotspots: High Intensity Land Use on Highly Permeable Soils*

The Bristol County Water Authority  
Wellhead Protection Area and the  
Barrington Aquifer Recharge Area  
(RIGIS Data)



**High Intensity Land Use on Excessively Permeable Soils**

- Medium Density Residential (1 to 1/4 acre lots)
- Medium High Density Residential (1/4 to 1/8 acre lots)
- Commercial (sale of products and services)
- Institutional (schools, hospitals, churches, etc.)
- Mines, Quarries and Gravel Pits
- Pasture (agricultural not suitable for tillage)

Wellhead Protection Area  
 Groundwater Aquifer Boundary  
 Roads  
 Rivers  
 Lakes, Ponds & Reservoirs  
 Tidal Waters

Scale: 1 : 5,000

0      500      1000      1500 Feet

MAP PRODUCED AT THE UNIVERSITY OF RHODE ISLAND  
ENVIRONMENTAL DATA CENTER 02-2002