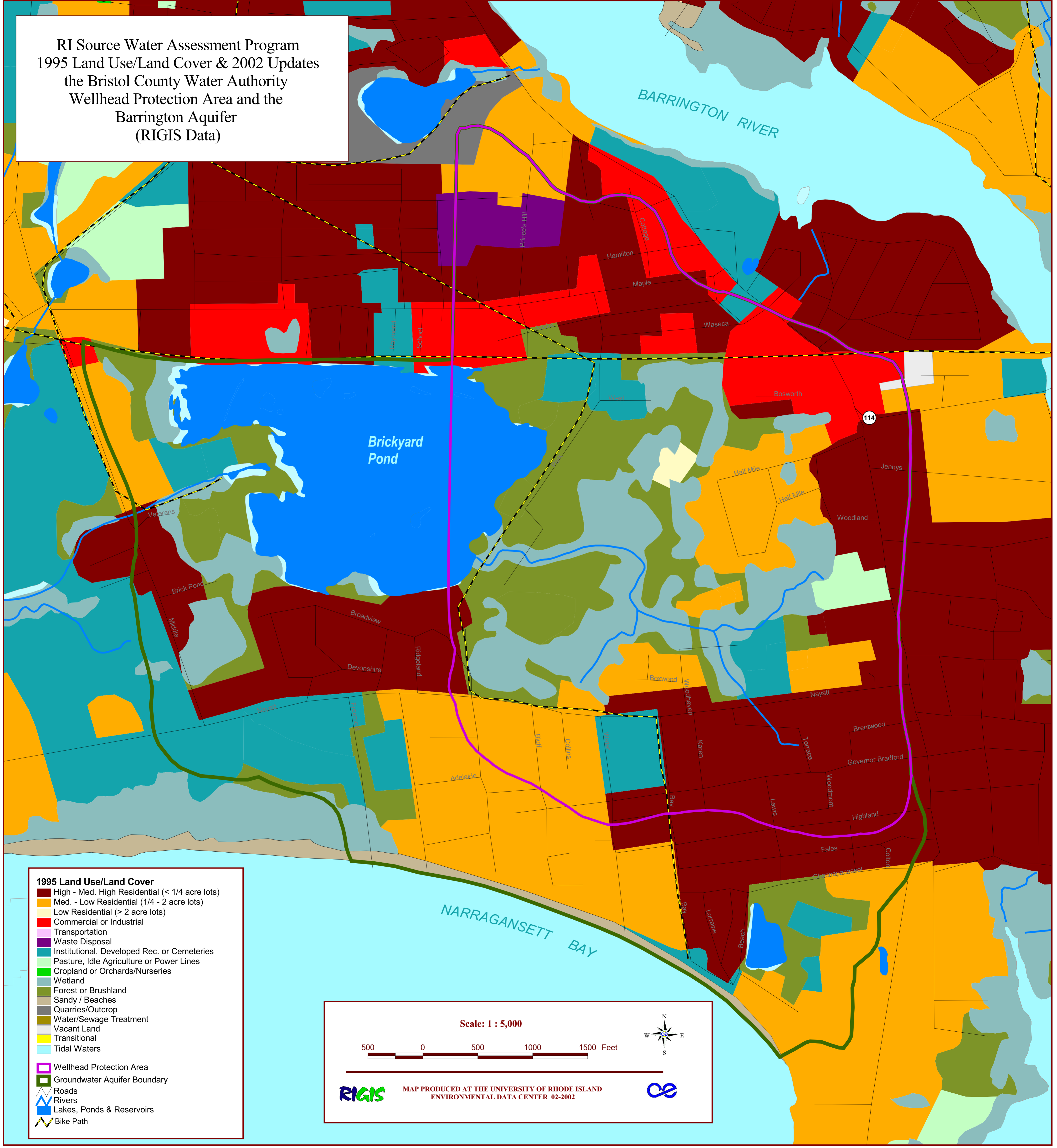


RI Source Water Assessment Program
 1995 Land Use/Land Cover & 2002 Updates
 the Bristol County Water Authority
 Wellhead Protection Area and the
 Barrington Aquifer
 (RIGIS Data)



- 1995 Land Use/Land Cover**
- High - Med. High Residential (< 1/4 acre lots)
 - Med. - Low Residential (1/4 - 2 acre lots)
 - Low Residential (> 2 acre lots)
 - Commercial or Industrial
 - Transportation
 - Waste Disposal
 - Institutional, Developed Rec. or Cemeteries
 - Pasture, Idle Agriculture or Power Lines
 - Cropland or Orchards/Nurseries
 - Wetland
 - Forest or Brushland
 - Sandy / Beaches
 - Quarries/Outcrop
 - Water/Sewage Treatment
 - Vacant Land
 - Transitional
 - Tidal Waters
- Wellhead Protection Area
- Groundwater Aquifer Boundary
- Roads
- Rivers
- Lakes, Ponds & Reservoirs
- Bike Path

Scale: 1 : 5,000

500 0 500 1000 1500 Feet

RIGIS MAP PRODUCED AT THE UNIVERSITY OF RHODE ISLAND ENVIRONMENTAL DATA CENTER 02-2002