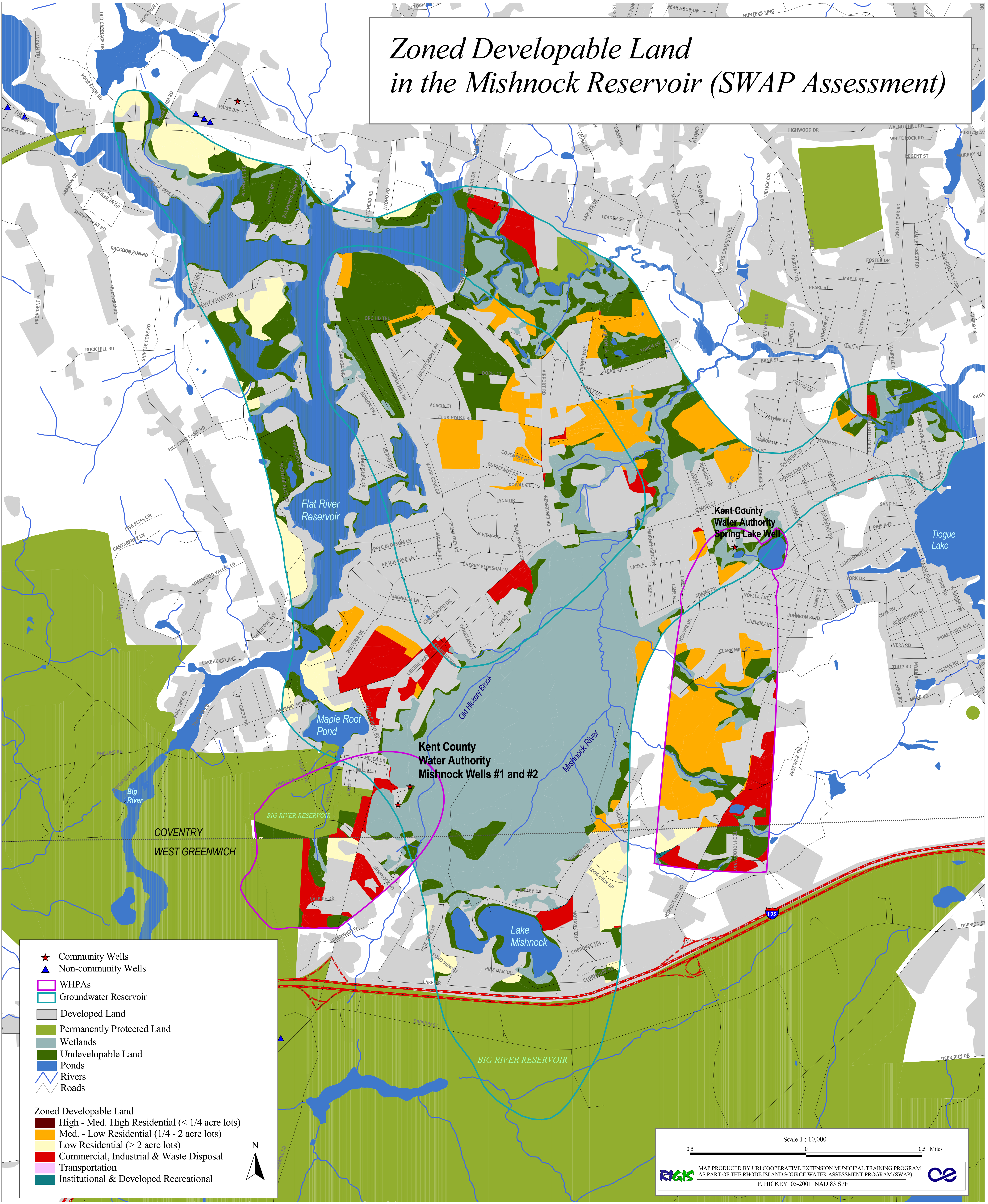


Zoned Developable Land in the Mishnock Reservoir (SWAP Assessment)



- ★ Community Wells
- ▲ Non-community Wells
- WHPAs
- Groundwater Reservoir
- Developed Land
- Permanently Protected Land
- Wetlands
- Undevelopable Land
- Ponds
- Rivers
- Roads

Zoned Developable Land

- High - Med. High Residential (< 1/4 acre lots)
- Med. - Low Residential (1/4 - 2 acre lots)
- Low Residential (> 2 acre lots)
- Commercial, Industrial & Waste Disposal
- Transportation
- Institutional & Developed Recreational



Scale 1 : 10,000

0.5 0 0.5 Miles

MAP PRODUCED BY URI COOPERATIVE EXTENSION MUNICIPAL TRAINING PROGRAM AS PART OF THE RHODE ISLAND SOURCE WATER ASSESSMENT PROGRAM (SWAP)

P. HICKEY 05-2001 NAD 83 SPF