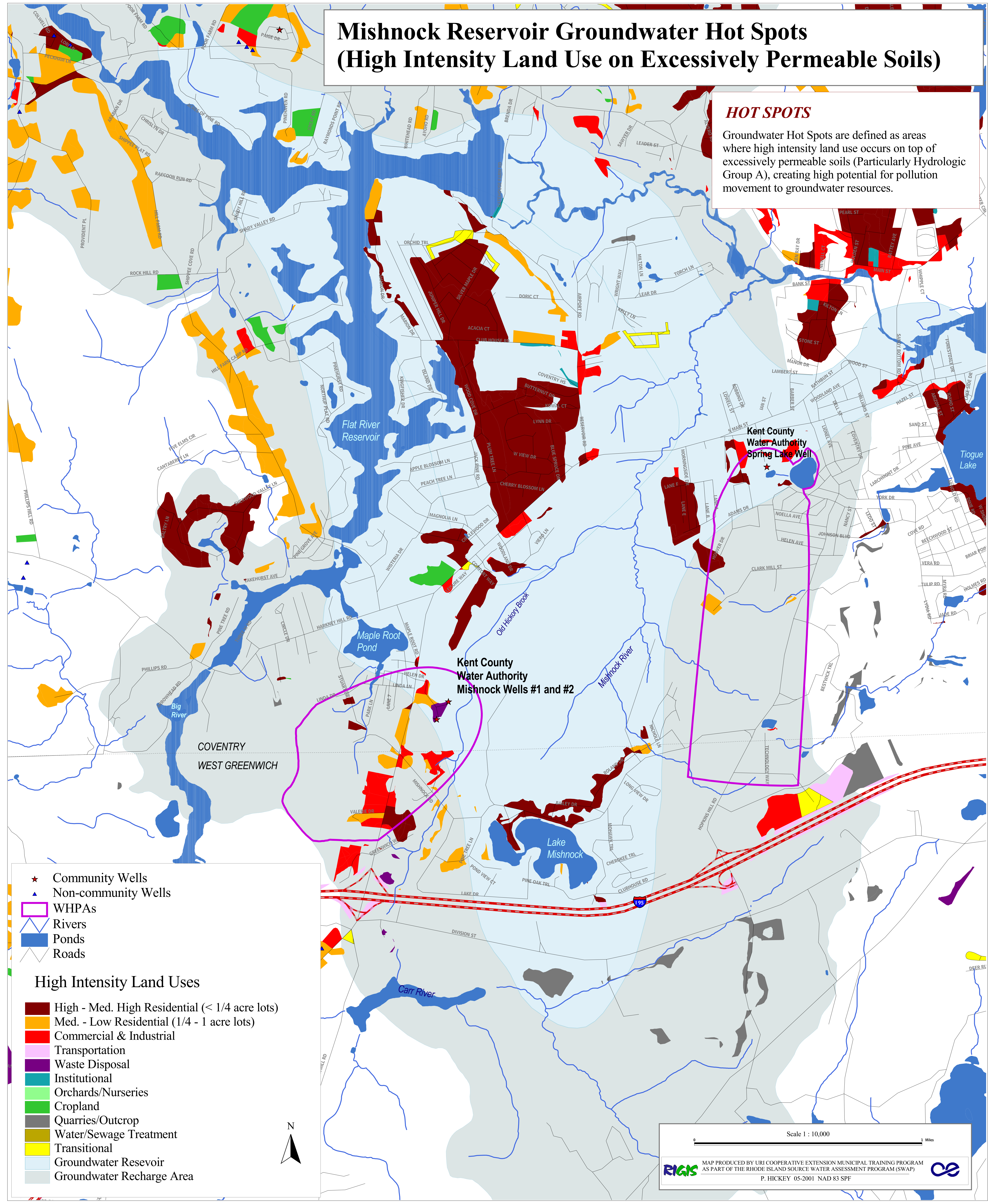


Mishnock Reservoir Groundwater Hot Spots (High Intensity Land Use on Excessively Permeable Soils)

HOT SPOTS

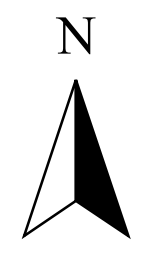
Groundwater Hot Spots are defined as areas where high intensity land use occurs on top of excessively permeable soils (Particularly Hydrologic Group A), creating high potential for pollution movement to groundwater resources.



- ★ Community Wells
- ▲ Non-community Wells
- WHPAs
- ▬ Rivers
- ▭ Ponds
- ▬ Roads

High Intensity Land Uses

- High - Med. High Residential (< 1/4 acre lots)
- Med. - Low Residential (1/4 - 1 acre lots)
- Commercial & Industrial
- Transportation
- Waste Disposal
- Institutional
- Orchards/Nurseries
- Cropland
- Quarries/Outcrop
- Water/Sewage Treatment
- Transitional
- Groundwater Reservoir
- Groundwater Recharge Area



Scale 1 : 10,000

0 1 Miles

MAP PRODUCED BY URI COOPERATIVE EXTENSION MUNICIPAL TRAINING PROGRAM AS PART OF THE RHODE ISLAND SOURCE WATER ASSESSMENT PROGRAM (SWAP)

P. HICKEY 05-2001 NAD 83 SPF