

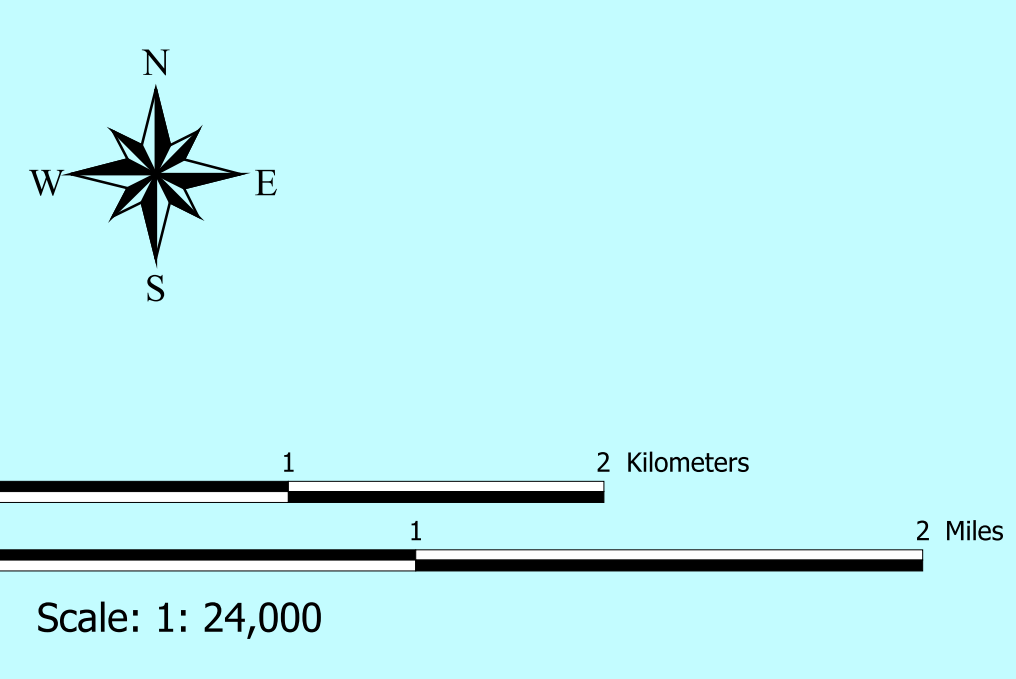
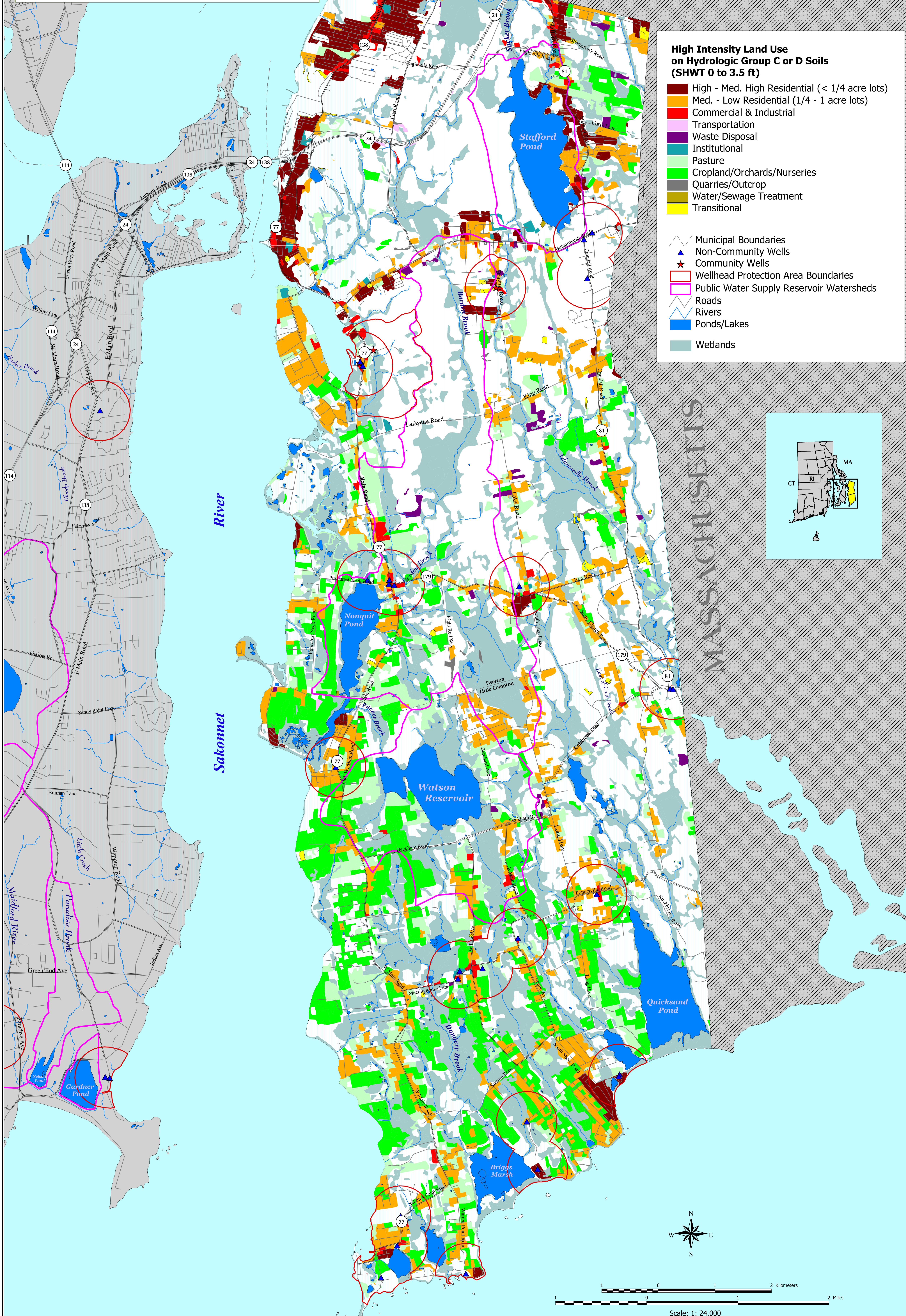
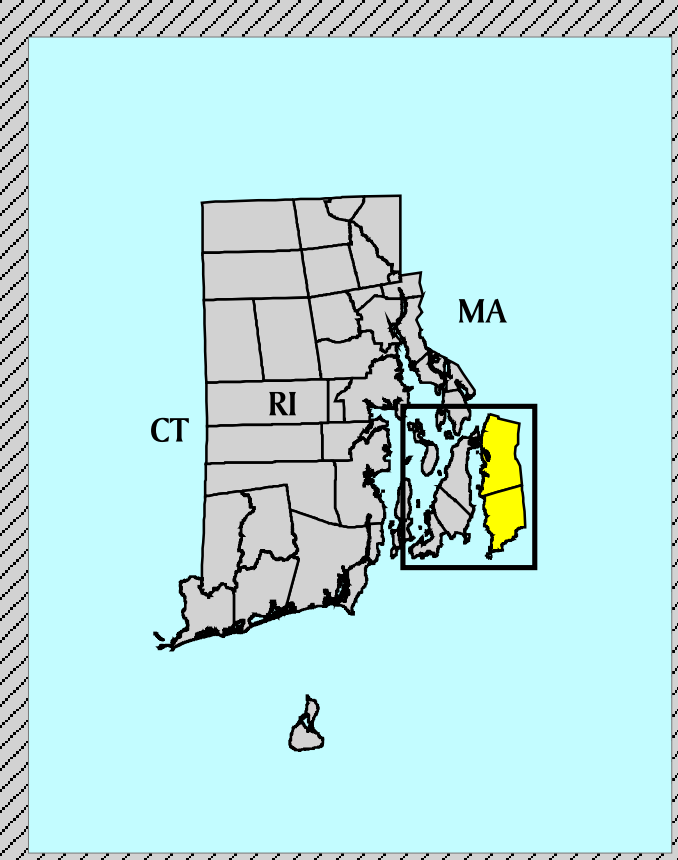
Rhode Island Source Water Assessment High Intensity Land Use on Seasonal High Water Table Soils **POTENTIAL POLLUTION HOTSPOTS**

Public Water Supply Reservoir Watersheds
in Tiverton & Little Compton, Rhode Island

High Intensity Land Use on Hydrologic Group C or D Soils (SHWT 0 to 3.5 ft)

- High - Med. High Residential (< 1/4 acre lots)
- Med. - Low Residential (1/4 - 1 acre lots)
- Commercial & Industrial
- Transportation
- Waste Disposal
- Institutional
- Pasture
- Cropland/Orchards/Nurseries
- Quarries/Outcrop
- Water/Sewage Treatment
- Transitional

Municipal Boundaries
 Non-Community Wells
 Community Wells
 Wellhead Protection Area Boundaries
 Public Water Supply Reservoir Watersheds
 Roads
 Rivers
 Ponds/Lakes
 Wetlands



Data Sources:
Rhode Island Geographic Information System (RIGIS)
Source Water Assessment Volunteers
PH 10/2001
SPF NAD-83

RIGIS
URI Environmental Data Center
Map produced by the University of Rhode Island Cooperative Extension Water Quality Program, Municipal Training Section
For the Rhode Island Source Water Assessment