

RI Source Water Assessment Program  
 Surface & Ground Water Resources and Potential Sources of Contamination  
 Bristol County Water Authority, The Kickemuit & Swansea Reservoir Watershed (MA)

*Riparian Hotspots*

This map highlights areas where land without natural vegetative cover such as forest, brush or wetland lies adjacent to streams and ponds. Unvegetated buffer areas have a higher risk for pollution transport to surface waters. After field verification, these areas can be prioritized for potential buffer restoration.

**Development in Riparian Buffers**

- High - Med. High Residential (< 1/4 acre lots)
- Med. - Low Residential (1/4 - 2 acre lots)
- Commercial or Industrial
- Transportation
- Pasture, Idle Agriculture or Power Lines
- Cropland or Orchards/Nurseries

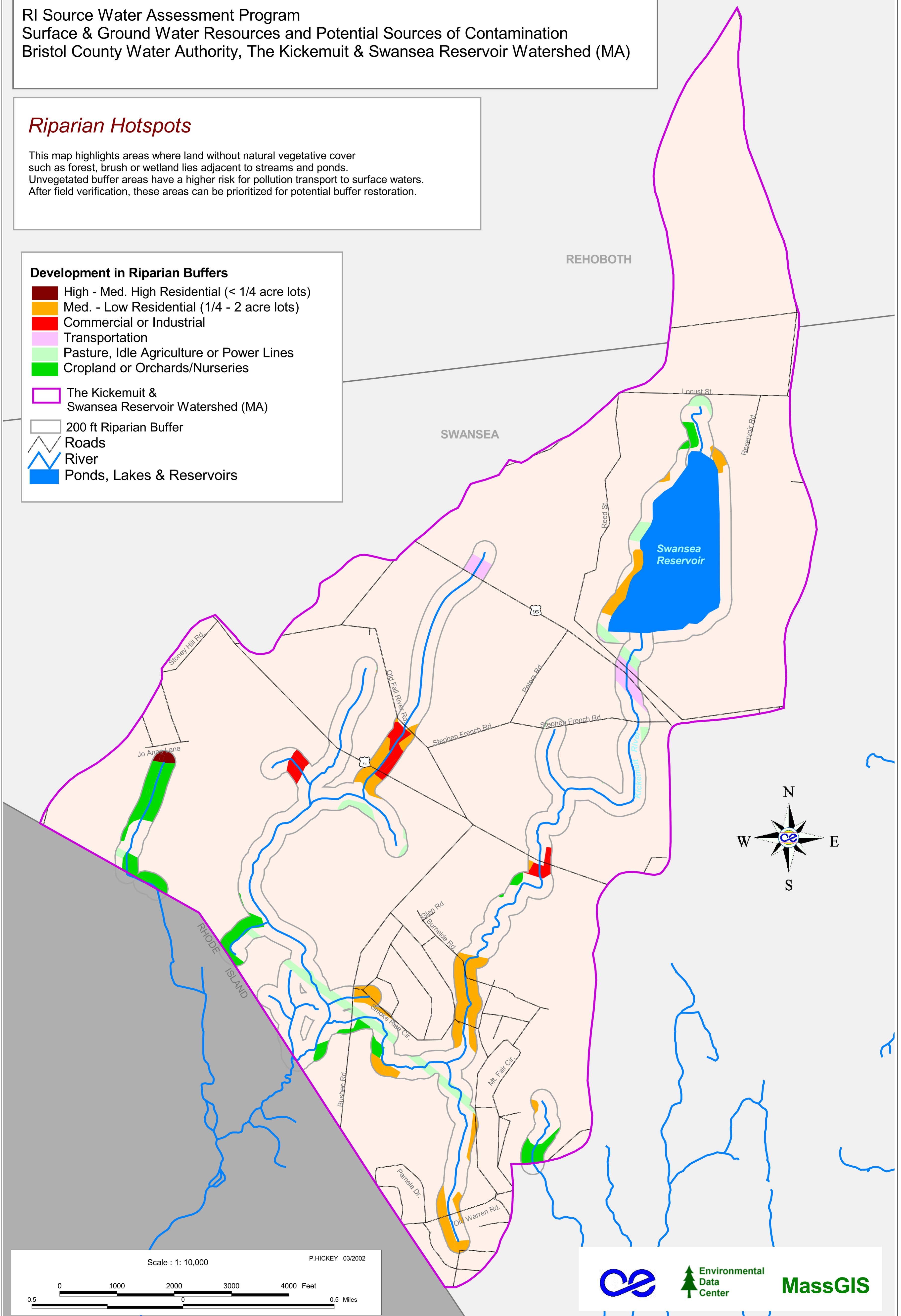
The Kickemuit & Swansea Reservoir Watershed (MA)

200 ft Riparian Buffer

Roads

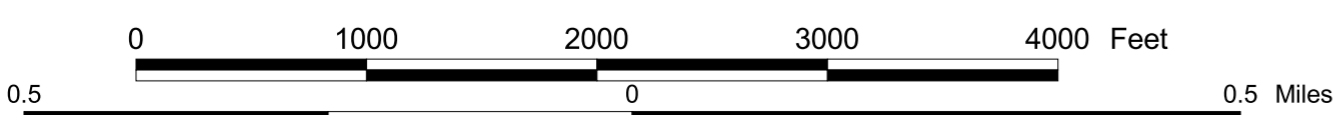
River

Ponds, Lakes & Reservoirs



Scale : 1: 10,000

P.HICKEY 03/2002



Environmental Data Center

MassGIS