

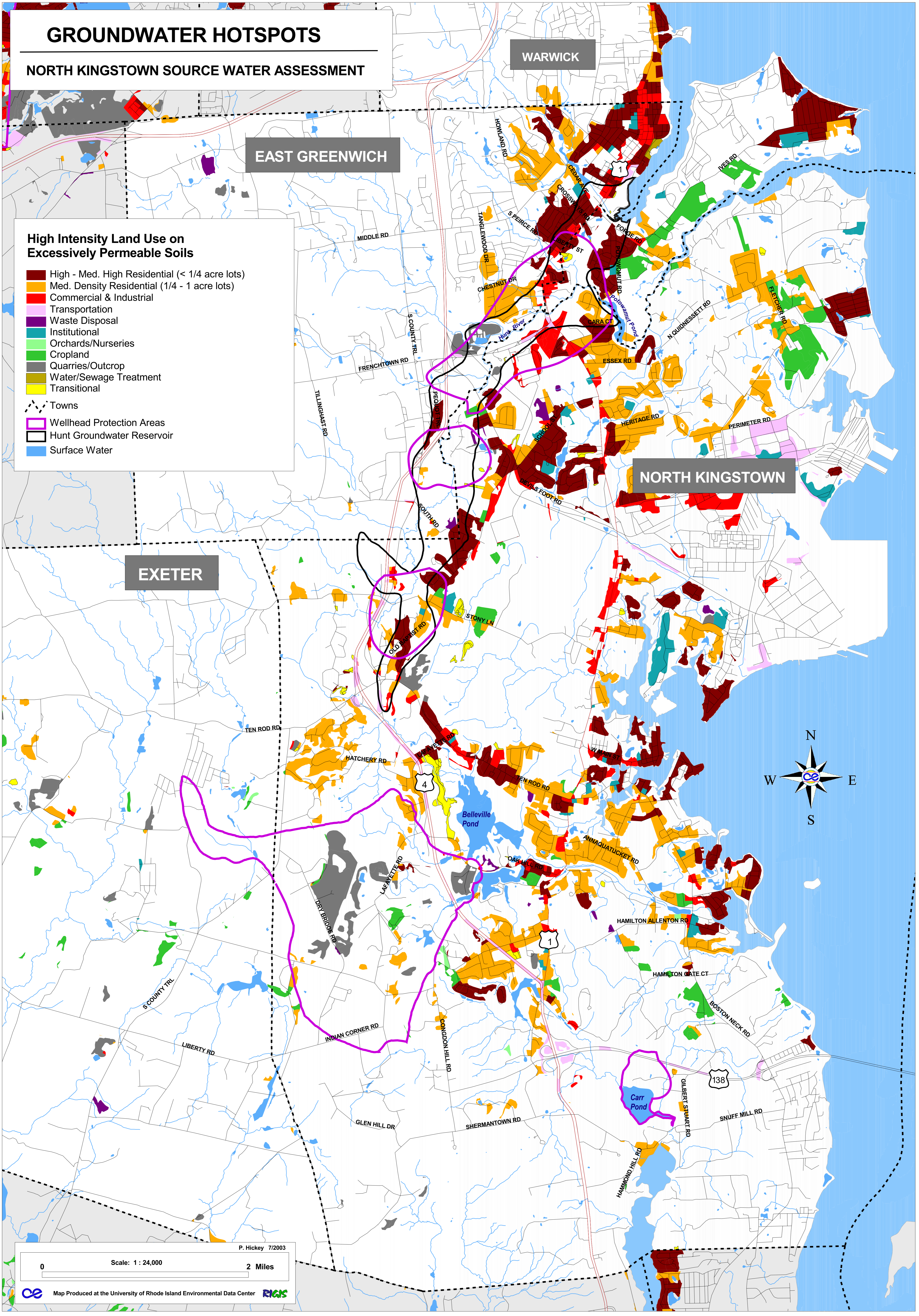
GROUNDWATER HOTSPOTS

NORTH KINGSTOWN SOURCE WATER ASSESSMENT

High Intensity Land Use on Excessively Permeable Soils

- High - Med. High Residential (< 1/4 acre lots)
- Med. Density Residential (1/4 - 1 acre lots)
- Commercial & Industrial
- Transportation
- Waste Disposal
- Institutional
- Orchards/Nurseries
- Cropland
- Quarries/Outcrop
- Water/Sewage Treatment
- Transitional

- Towns
- Wellhead Protection Areas
- Hunt Groundwater Reservoir
- Surface Water



WARWICK

EAST GREENWICH

NORTH KINGSTOWN

EXETER

