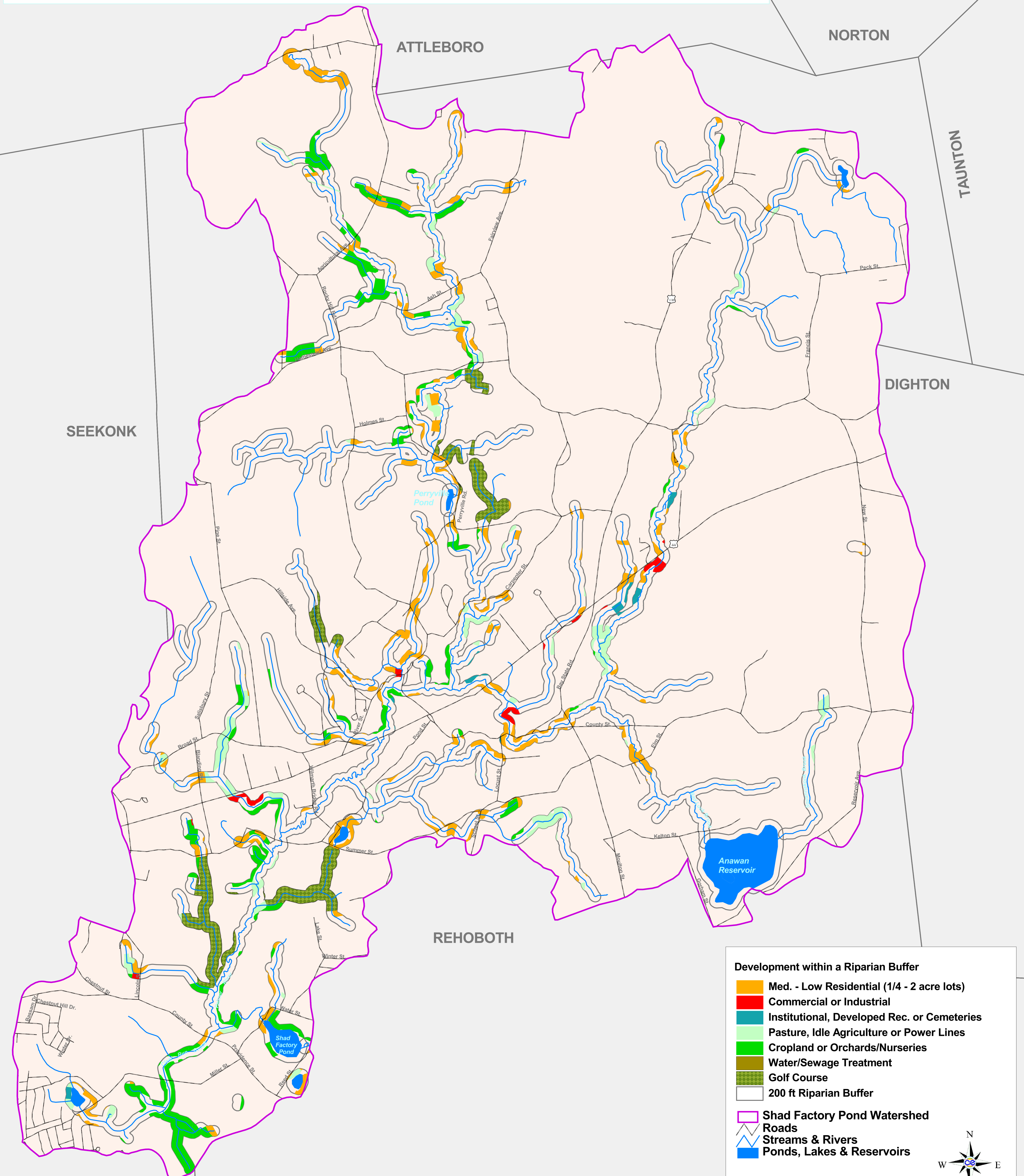


RI Source Water Assessment Program  
 Riparian Hotspots: Development within 200 ft of a Surface Waterbody  
 Bristol County Water Authority, the Shad Factory Pond & Anawan Reservoir Watershed



**Development within a Riparian Buffer**

- Med. - Low Residential (1/4 - 2 acre lots)
- Commercial or Industrial
- Institutional, Developed Rec. or Cemeteries
- Pasture, Idle Agriculture or Power Lines
- Cropland or Orchards/Nurseries
- Water/Sewage Treatment
- Golf Course
- 200 ft Riparian Buffer

**Shad Factory Pond Watershed**

- Roads
- Streams & Rivers
- Ponds, Lakes & Reservoirs

