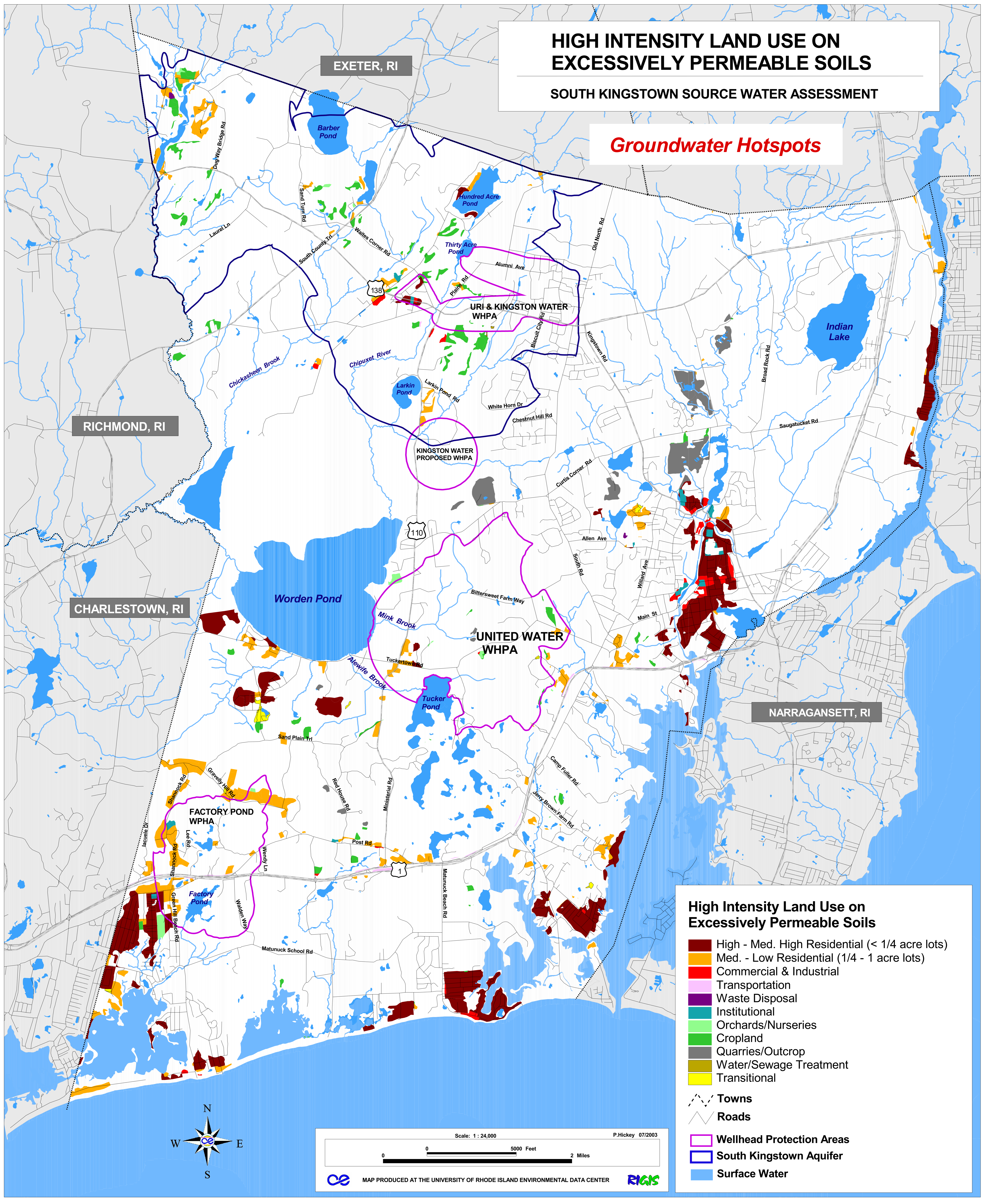


HIGH INTENSITY LAND USE ON EXCESSIVELY PERMEABLE SOILS

SOUTH KINGSTOWN SOURCE WATER ASSESSMENT

Groundwater Hotspots



High Intensity Land Use on Excessively Permeable Soils

- High - Med. High Residential (< 1/4 acre lots)
- Med. - Low Residential (1/4 - 1 acre lots)
- Commercial & Industrial
- Transportation
- Waste Disposal
- Institutional
- Orchards/Nurseries
- Cropland
- Quarries/Outcrop
- Water/Sewage Treatment
- Transitional

- Towns
- Roads
- Wellhead Protection Areas
- South Kingstown Aquifer
- Surface Water

