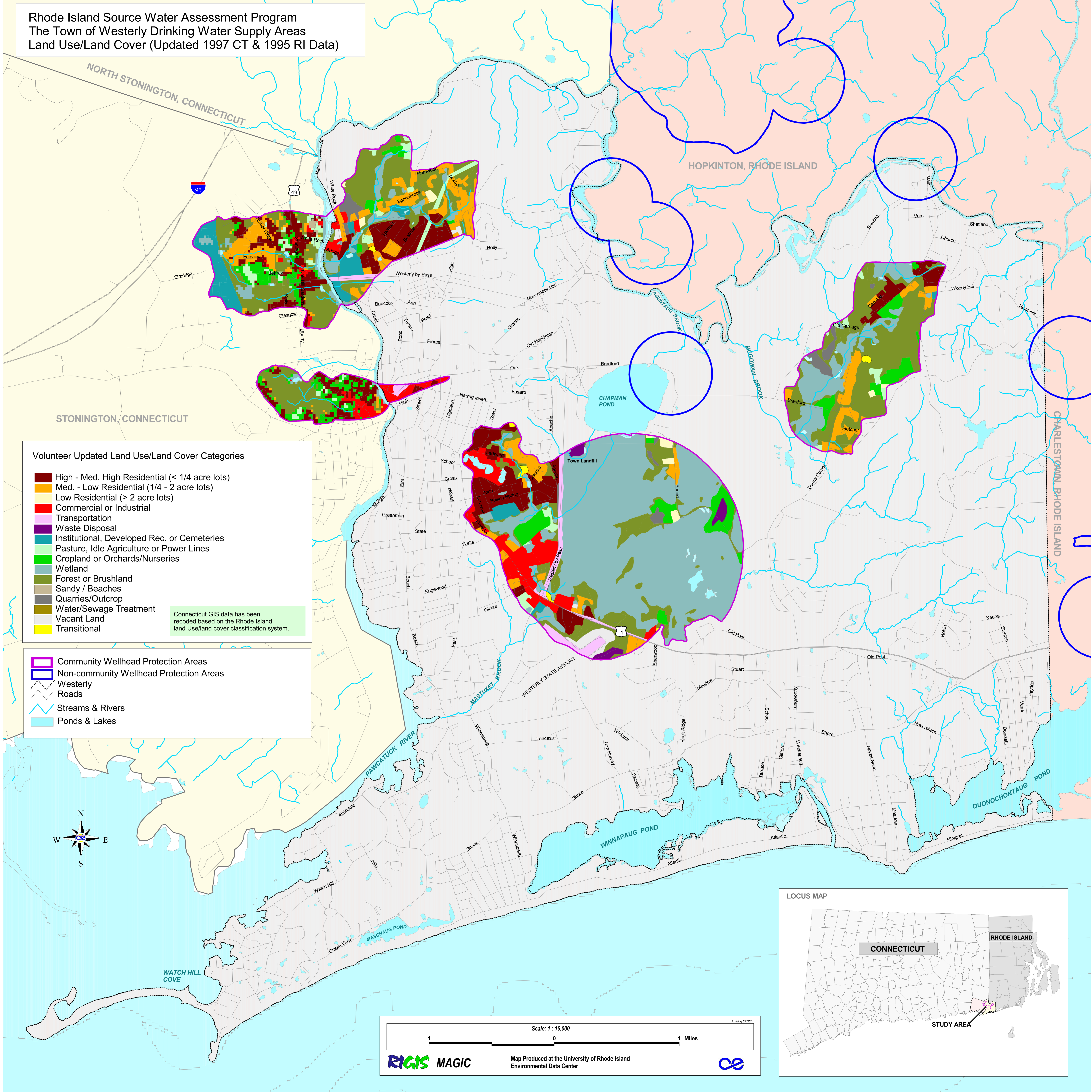
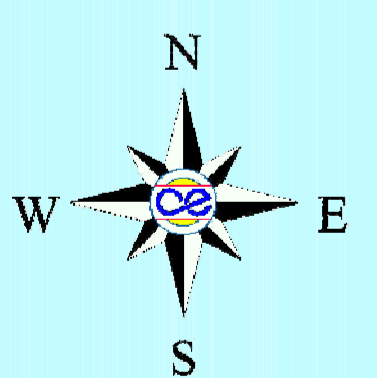


Rhode Island Source Water Assessment Program
 The Town of Westerly Drinking Water Supply Areas
 Land Use/Land Cover (Updated 1997 CT & 1995 RI Data)



- Volunteer Updated Land Use/Land Cover Categories**
- High - Med. High Residential (< 1/4 acre lots)
 - Med. - Low Residential (1/4 - 2 acre lots)
 - Low Residential (> 2 acre lots)
 - Commercial or Industrial
 - Transportation
 - Waste Disposal
 - Institutional, Developed Rec. or Cemeteries
 - Pasture, Idle Agriculture or Power Lines
 - Cropland or Orchards/Nurseries
 - Wetland
 - Forest or Brushland
 - Sandy / Beaches
 - Quarries/Outcrop
 - Water/Sewage Treatment
 - Vacant Land
 - Transitional
- Connecticut GIS data has been recoded based on the Rhode Island land use/land cover classification system.

- Community Wellhead Protection Areas
- Non-community Wellhead Protection Areas
- Westerly Roads
- Streams & Rivers
- Ponds & Lakes



Scale: 1 : 16,000

1 0 1 Miles

RIGIS MAGIC Map Produced at the University of Rhode Island Environmental Data Center

