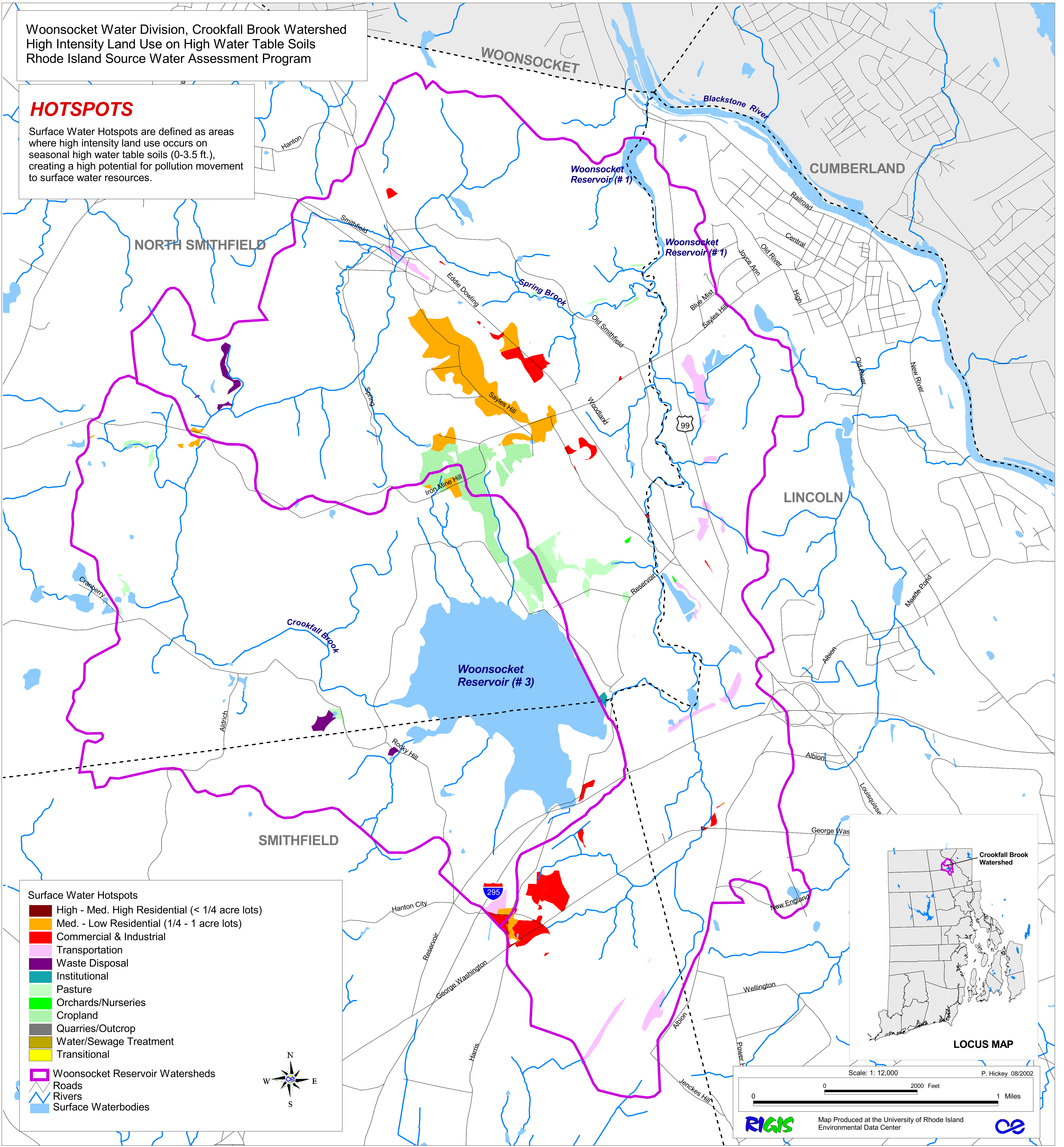


Woonsocket Water Division, Crookfall Brook Watershed
 High Intensity Land Use on High Water Table Soils
 Rhode Island Source Water Assessment Program

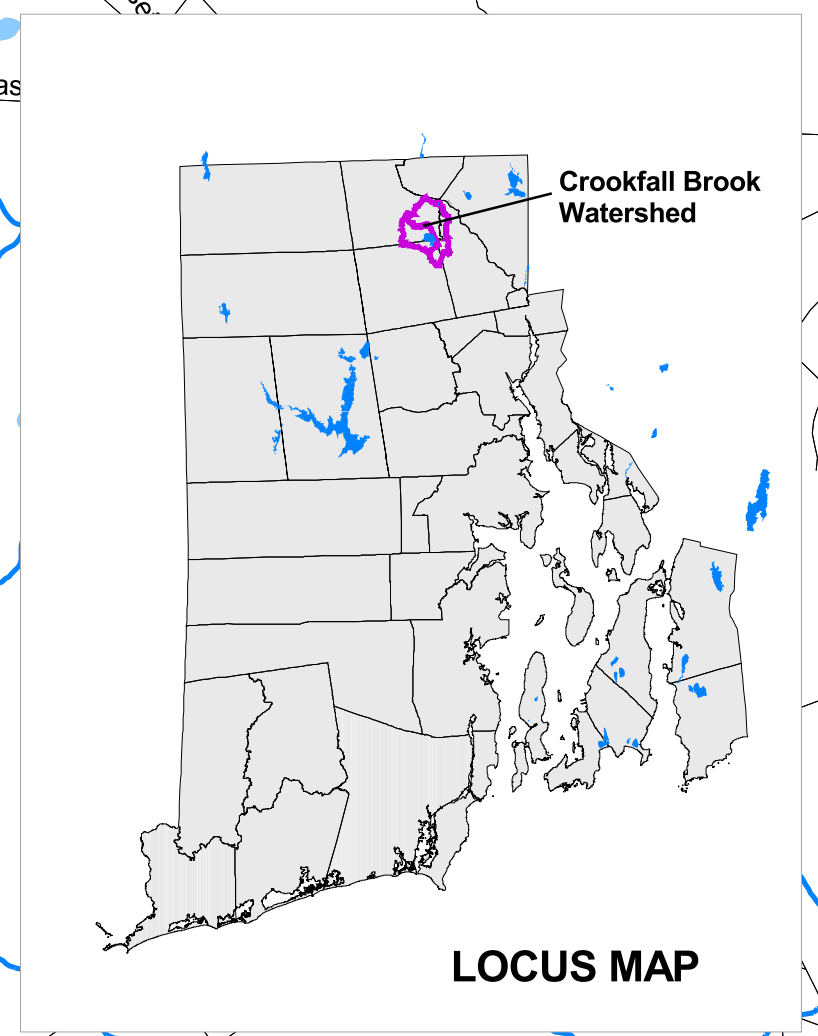
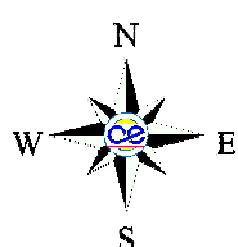
HOTSPOTS

Surface Water Hotspots are defined as areas where high intensity land use occurs on seasonal high water table soils (0-3.5 ft.), creating a high potential for pollution movement to surface water resources.



- Surface Water Hotspots
- High - Med. High Residential (< 1/4 acre lots)
 - Med. - Low Residential (1/4 - 1 acre lots)
 - Commercial & Industrial
 - Transportation
 - Waste Disposal
 - Institutional
 - Pasture
 - Orchards/Nurseries
 - Cropland
 - Quarries/Outcrop
 - Water/Sewage Treatment
 - Transitional

- Woonsocket Reservoir Watersheds
- Roads
- Rivers
- Surface Waterbodies



Scale: 1: 12,000 P. Hickey 08/2002

0 0 2000 Feet 1 Miles

RIGIS Map Produced at the University of Rhode Island Environmental Data Center