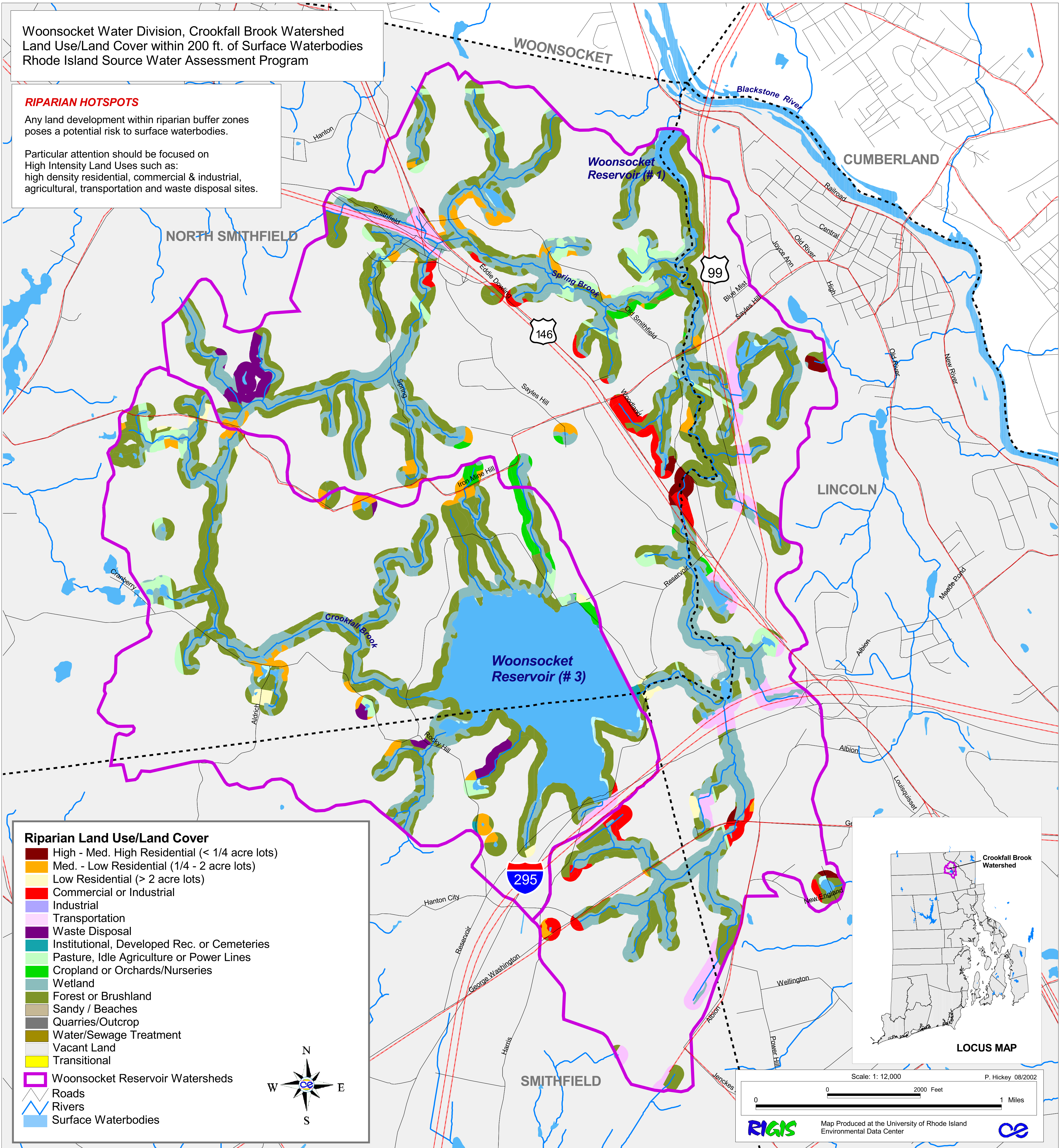


Woonsocket Water Division, Crookfall Brook Watershed  
 Land Use/Land Cover within 200 ft. of Surface Waterbodies  
 Rhode Island Source Water Assessment Program

**RIPARIAN HOTSPOTS**

Any land development within riparian buffer zones poses a potential risk to surface waterbodies.

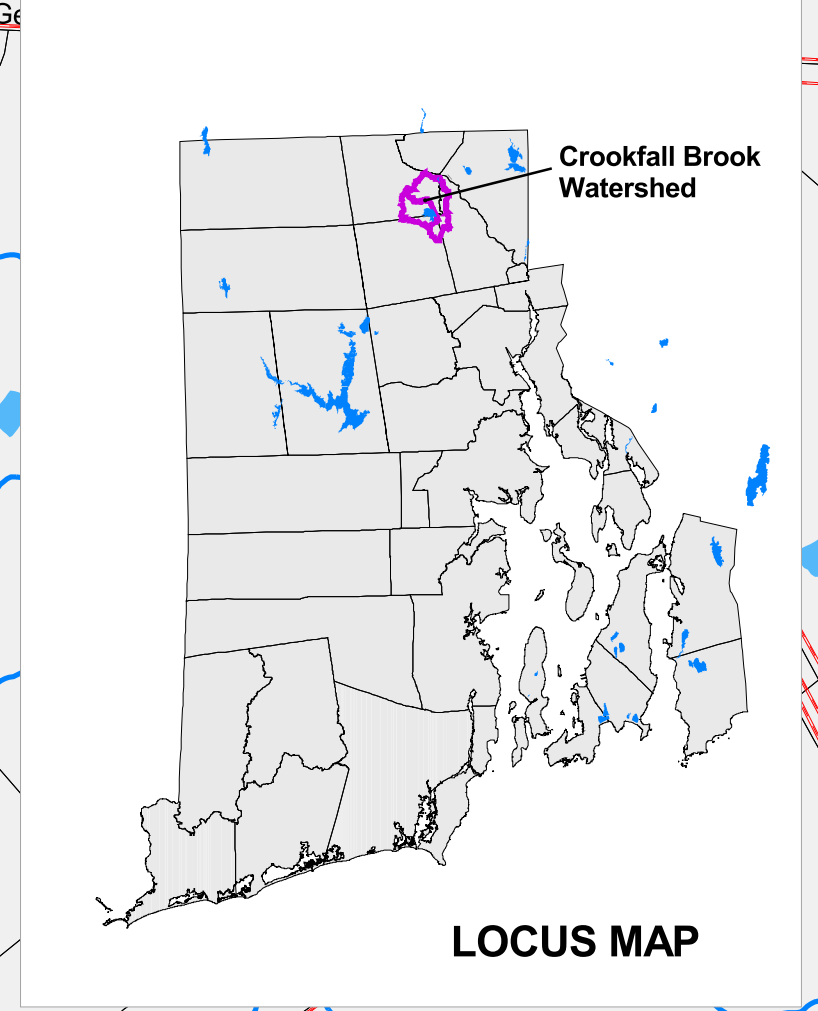
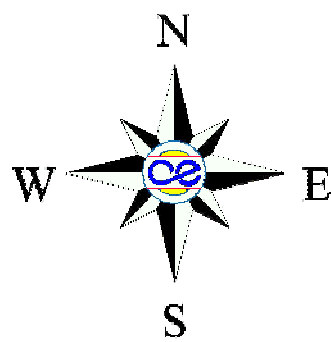
Particular attention should be focused on High Intensity Land Uses such as:  
 high density residential, commercial & industrial, agricultural, transportation and waste disposal sites.



**Riparian Land Use/Land Cover**

- High - Med. High Residential (< 1/4 acre lots)
- Med. - Low Residential (1/4 - 2 acre lots)
- Low Residential (> 2 acre lots)
- Commercial or Industrial
- Industrial
- Transportation
- Waste Disposal
- Institutional, Developed Rec. or Cemeteries
- Pasture, Idle Agriculture or Power Lines
- Cropland or Orchards/Nurseries
- Wetland
- Forest or Brushland
- Sandy / Beaches
- Quarries/Outcrop
- Water/Sewage Treatment
- Vacant Land
- Transitional

- Woonsocket Reservoir Watersheds
- Roads
- Rivers
- Surface Waterbodies



Scale: 1: 12,000 P. Hickey 08/2002

0 0 2000 Feet 1 Miles

**RIGIS** Map Produced at the University of Rhode Island Environmental Data Center