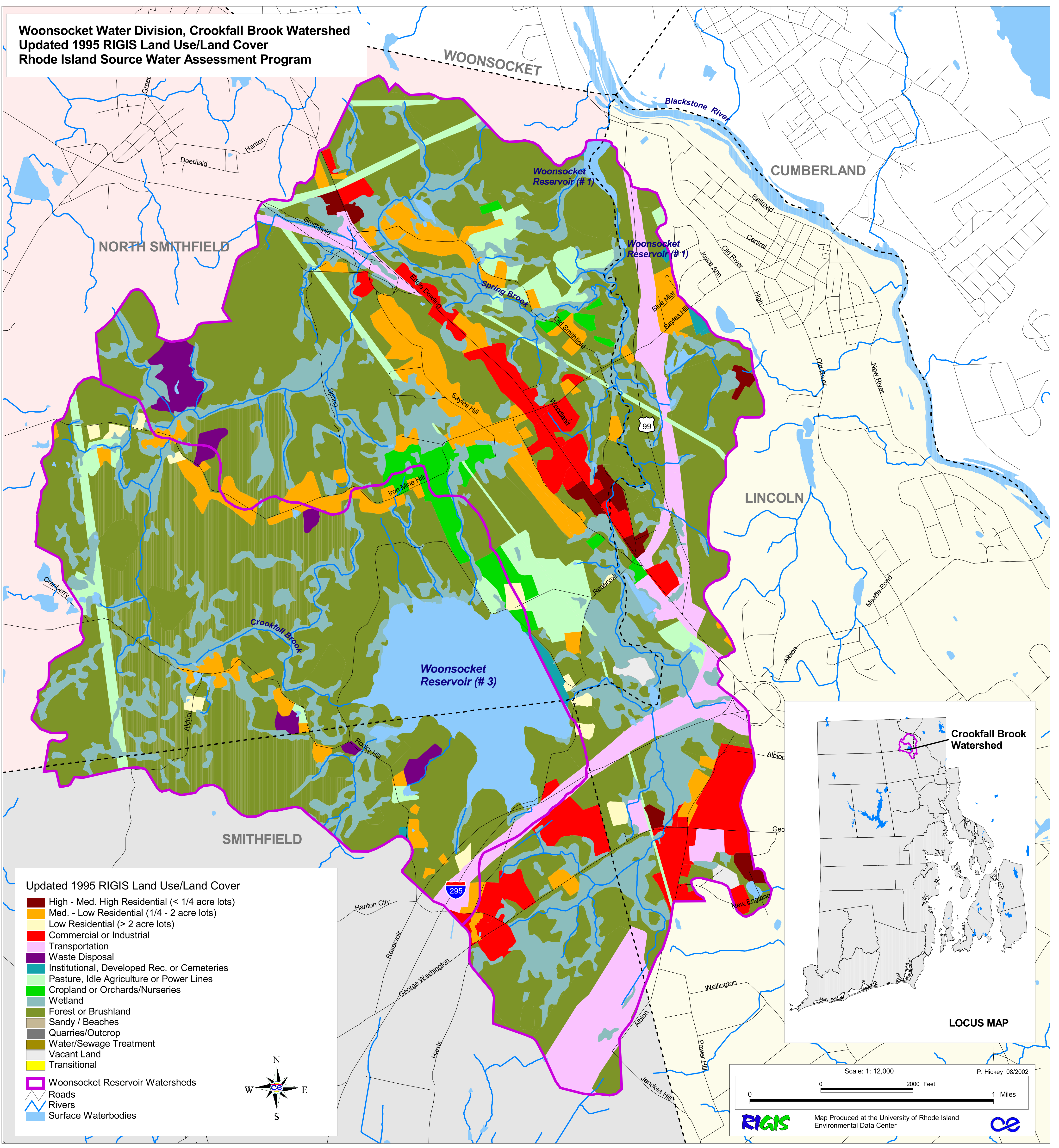


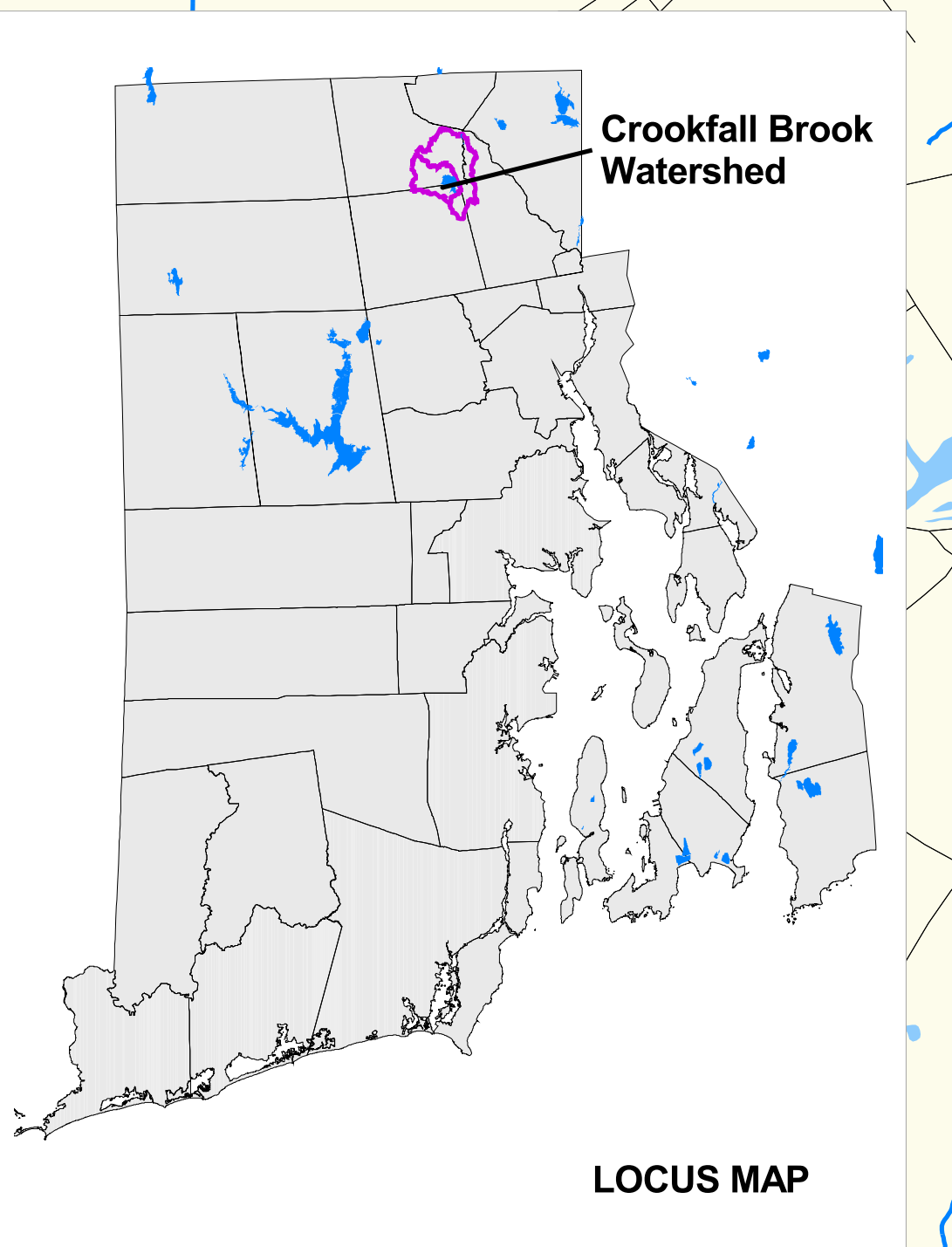
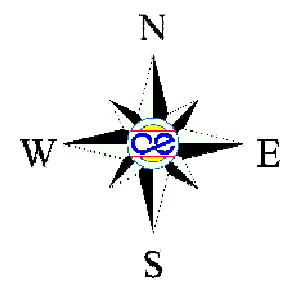
**Woonsocket Water Division, Crookfall Brook Watershed
Updated 1995 RIGIS Land Use/Land Cover
Rhode Island Source Water Assessment Program**



Updated 1995 RIGIS Land Use/Land Cover

- High - Med. High Residential (< 1/4 acre lots)
- Med. - Low Residential (1/4 - 2 acre lots)
- Low Residential (> 2 acre lots)
- Commercial or Industrial
- Transportation
- Waste Disposal
- Institutional, Developed Rec. or Cemeteries
- Pasture, Idle Agriculture or Power Lines
- Cropland or Orchards/Nurseries
- Wetland
- Forest or Brushland
- Sandy / Beaches
- Quarries/Outcrop
- Water/Sewage Treatment
- Vacant Land
- Transitional

- Woonsocket Reservoir Watersheds
- Roads
- Rivers
- Surface Waterbodies



Scale: 1: 12,000 P. Hickey 08/2002

0 0 2000 Feet 1 Miles

RIGIS Map Produced at the University of Rhode Island Environmental Data Center