

Woonsocket Source Water Assessment



University of Rhode Island Cooperative
Extension in cooperation with RI Health
Source Water Assessment Program

Acknowledgements

This assessment was conducted in partnership with the Woonsocket Water Division, municipal officials representing watershed communities, staff of RI HEALTH and the RI Department of Environmental Management, nonprofit organizations promoting conservation and environmental stewardship of watershed resources, and many other citizen volunteers. These volunteers made significant contributions to the mapping and assessment work. They reviewed draft maps, commented on preliminary assessment results, offered insights on local water quality concerns, and offered practical suggestions to better protect source waters. Special thanks goes to Jim Marvel and Carol Larivier of Woonsocket Water for sharing background reports and current data, reviewing draft results, and participating in the assessment. While we have tried to incorporate local comments to the extent possible, any errors or omissions are the sole responsibility of the authors. The findings and recommendations were developed based on discussions with the assessment volunteers but represent the best professional judgment of the authors based on available data, modeled assessment results and supporting scientific literature, and do not necessarily reflect municipal, URI or RI HEALTH policies.

As the State SWAP Program Coordinator and project manager, Clay Commons provided essential support throughout this project, which included assistance in developing risk analysis procedures, making RI HEALTH technical reports available, organizing public outreach, and participating in the assessment process. Debra LaFleur made public well monitoring data readily available and helped us interpret this rich database. June Swallow, Chief Office of Drinking Water Quality and EPA Region 1 project officer, Buddy Souza, provided support and direction throughout the project.

Dr. Arthur Gold, Professor in the Natural Resources Science Department and Extension Water Quality Program served as scientific advisor on this project. Dr. Gold oversaw development of the assessment approach and provided guidance in evaluating pollution risks and interpreting modeled results. Other key URI staff who contributed to the assessments include James Lucht who assisted with initial GIS database development and assessment. Dorothy Q. Kellogg provided support in modifying the MANAGE nutrient loading spreadsheet for SWAP assessments. Holly Burdett and Alyson McCann assisted in public outreach and trained volunteers to update land use maps used in the assessment. Kaytee Manchester, URI Coastal Fellowship Program intern, assisted in GIS mapping and well data analysis. Emmanuel Falck also assisted in final well data analysis and report editing. The URI Environmental Data Center provided direct access to the RIGIS database and the Center's knowledgeable staff generously provided technical support in GIS database development and mapping.

Woonsocket Source Water Assessment

April 2003

Patricia Hickey, Lorraine Joubert and Lenny Bellet
University of Rhode Island
College of the Environment and Life Sciences
Department of Natural Resources Sciences
Cooperative Extension
Nonpoint Education for Municipal Officials
Coastal Institute, 1 Greenhouse Road
Kingston, RI 02881

Prepared for:

RI HEALTH
Office of Drinking Water Quality
3 Capitol Hill
Rm. 209 Cannon Building
Providence, RI 02908-5097

This report and a fact sheet summarizing results are available to view or download through the URI Cooperative Extension and RI HEALTH websites. Large format maps of the water supply areas developed to inventory natural features and map potential pollution sources are available for review at municipal offices.

For more information about the RI Source Water Assessment Program or this report contact:

RI HEALTH
Office of Drinking Water Quality
Tel: 401 222-6867
www.HEALTH.ri.gov/environment/dwq/Home.htm

URI Cooperative Extension
Nonpoint Education for Municipal Officials
Tel: 401 874-2138; Email: ljoubert@uri.edu
Web: www.uri.edu/ce/wq/

Funding for this report was provided by the RI HEALTH Office of Drinking Water Quality through a grant from the U.S. Environmental Protection Agency under the Source Water Assessment Program, established by the 1996 amendments to the federal Safe Drinking Water Act.

This is Technical Report #03-09, Contribution 3987 of the University of Rhode Island College of Environment and Life Sciences and Rhode Island Cooperative Extension. URI Cooperative Extension provides equal program opportunities without regard to race, age, sex or preference, creed or disability..

Woonsocket Source Water Assessment

Table of Contents

	<i>Page</i>
1. Introduction	1
1.1 RI Source Water Assessment Program Goals	1
1.1 Assessment Study Areas	2
1.2 Summary of Existing Conditions	4
2. Assessment Method	7
2.1 Two Levels of Assessment	7
2.2 Background on assessing water quality impacts	8
2.3 Approach: Linking Landscape Features to Pollution Risks	10
2.4 Database Development	13
2.5 Assessment Steps	14
3. Pollution Risk Results	17
3.1 Linking land use to water quality	17
3.2 Landscape / Land Use Risk Indicators	21
1. High Intensity Land Use...	21
2. Impervious Cover	23
3. Forest and Wetland	25
4. Shoreline Land Use	27
5. Soils	29
3.3 Runoff and Nutrient Loading Estimates	31
1. Surface Runoff	34
2. Nutrient Loading	36
3.4 Mapping Pollution Risks	41
3.5 Summary Results	44
4. Source Water Protection Tools	49
4.1 Factors to Consider in Selecting Management Practices	50
4.2 Management Actions for Municipal Officials	54
4.3 Management Actions for Water Suppliers	73
4.4 What Residents, Landowners and Businesses Can Do	74
REFERENCES	77

LIST OF APPENDICES

- A RI Source Water Assessment Program, Methods and Assumptions in ranking public water supply susceptibility
- B Susceptibility Ranking Worksheet
- C Sampling Data Analysis and Rating
- D Public Participation in the Assessment Process
- E Existing Condition of Surface and Ground Water Resources
- F Current and Future Land Use Estimates
- G Characteristics of Rhode Island Soils
- H RIGIS Coverages used in the MANAGE Assessment of Major Community Supplies
- I MANAGE Summary Results
- J MANAGE GIS-Based Pollution Risk Assessment Method, Watershed / Aquifer Pollution Risk Indicators
- K Hydrologic and Nutrient Loading Assumptions

LIST OF FIGURES

1a.	Estimated High Intensity Land Use: Woonsocket SWAP Study Areas	22
1b.	Estimated High Intensity Land Use: Rhode Island Study Areas	22
2a.	Estimated Impervious Surface Area: Woonsocket SWAP Study Areas	24
2b.	Estimated Impervious Surface Area: Rhode Island Study Areas	24
3.	Estimated Percent Forest and Wetlands Cover	26
4.	Estimated High Intensity Land Use in Riparian Buffer	28
5.	Estimated Percent of Soils by Hydrologic Group	30
6.	Estimates of Groundwater Recharge and Surface Water Runoff	35
7.	Estimated Nitrogen Loading to Groundwater	38
8.	Estimated Phosphorus Loading	40
9.	Estimated Sources of Phosphorus	40

LIST OF TABLES

1.	Summary of Current and Future Land Use Risks	47
2.	Summary of Standard Buffer Widths for Water Quality Protection	62

LIST OF MAPS

1.	Woonsocket Public Water Supply District	2
2.	Woonsocket Reservoir Watersheds	3
3.	Harris Pond Reservoir Watershed	4

Woonsocket Source Water Assessment

1. INTRODUCTION

This report summarizes the results of the Rhode Island Source Water Assessment Program for the City of Woonsocket public drinking water supply areas. The assessment study area includes three reservoir watersheds located in both Rhode Island and Massachusetts.

1.1 RI Source Water Assessment Program Goals

The goal of Rhode Island's Source Water Assessment Program is to better protect drinking water supplies at their source by evaluating threats to future water quality and making this information available to water suppliers, town officials, and landowners. Because the vast majority of land in reservoir watersheds and groundwater recharge areas is privately owned, the assessment is designed to generate information municipal officials can use to support local planning and regulation of land use in drinking water supply watersheds and aquifers. The assessment provides a consistent framework for identifying and ranking threats to all Rhode Island public water supplies following three basic steps:

- Inventory and map potential sources of pollution within wellhead protection areas or reservoir watersheds;
- Assess the risk associated with these potential sources of contamination and rank the susceptibility of the water supply;
- Identify practical steps town officials and residents can take to reduce pollution risks and make results available.

This assessment was conducted by the University of Rhode Island Cooperative Extension in cooperation with the Rhode Island Department of Health and numerous water suppliers, municipal officials and local volunteers dedicated to protecting local drinking water supplies. Participants in the mapping and assessment phases of the program attended a series of workshops to help identify potential sources of contamination within the study areas. Assessment volunteers reviewed draft products and helped to identify alternative management options for better protection of local drinking water supplies.

What is Source Water?

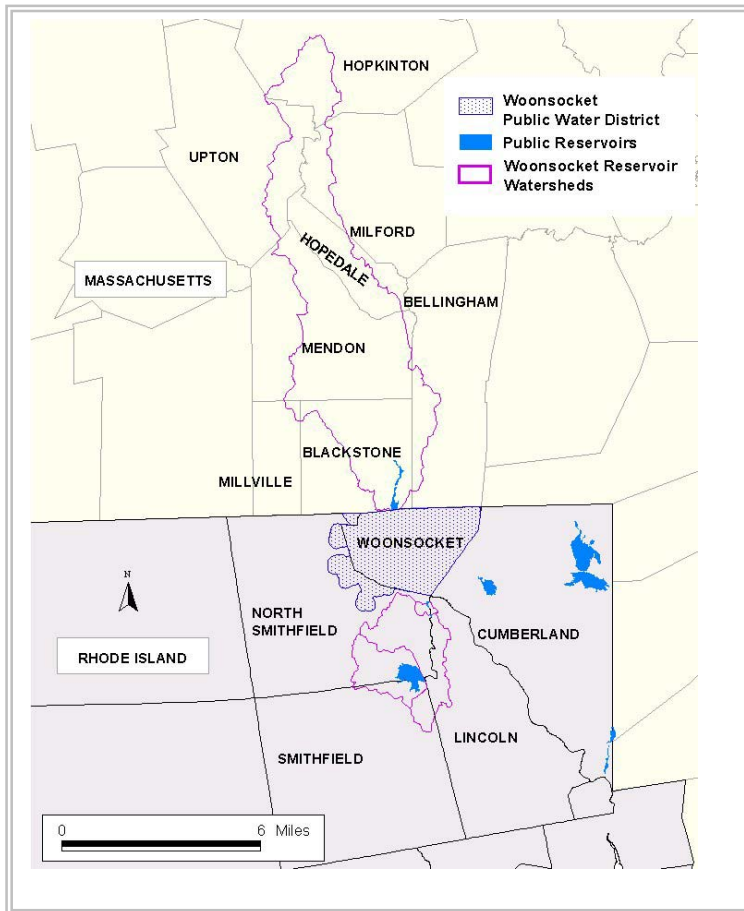
Source water is untreated water from streams, lakes, and interconnected underground aquifers that recharge public and private wells and replenish drinking water supply reservoirs.

While some treatment is usually necessary for public drinking water supplies, preventing drinking water contamination at the source makes good sense. Keeping headwater streams and groundwater recharge areas free of pollution:

- *Safeguards public health,*
- *Reduces treatment costs, and*
- *Protects environmental quality.*

U.S. Environmental Protection Agency Source Water Protection Program

Map 1: Woonsocket Public Water Supply District



1.2 Assessment Study Areas

Water Study The City of Woonsocket assessment study area includes the watersheds surrounding the City’s three surface water supplies: Reservoir #1 and Reservoir #3 located in Rhode Island, and the Harris Pond Reservoir located in Blackstone, Massachusetts. The Harris Pond watershed, which extends into portions of eight Massachusetts towns, is maintained as an auxiliary supply.

The City of Woonsocket, Water Department maintains approximately 47,000 service connections. The district includes all of Woonsocket and parts of North Smithfield, Rhode Island and Blackstone and Bellingham, Massachusetts. None of the City’s water supplies are located within Woonsocket. Although the City of Woonsocket does not have regulatory authority over land use in the watersheds for its reservoirs, it does own a significant amount of land surrounding its Rhode Island supplies.

Woonsocket Reservoir #1 Watershed

The 3,132-acre watershed for Woonsocket Reservoir #1 is located in the towns of North Smithfield and Lincoln, Rhode Island. Protection of this reservoir and its watershed is critical as all of the raw water in the Woonsocket Reservoir system passes through Reservoir #1. The Crookfall Brook, which flows through the watershed, conveys water directly from Reservoir #3 to Reservoir #1. The brook also forms the municipal boundary between North Smithfield and Lincoln.

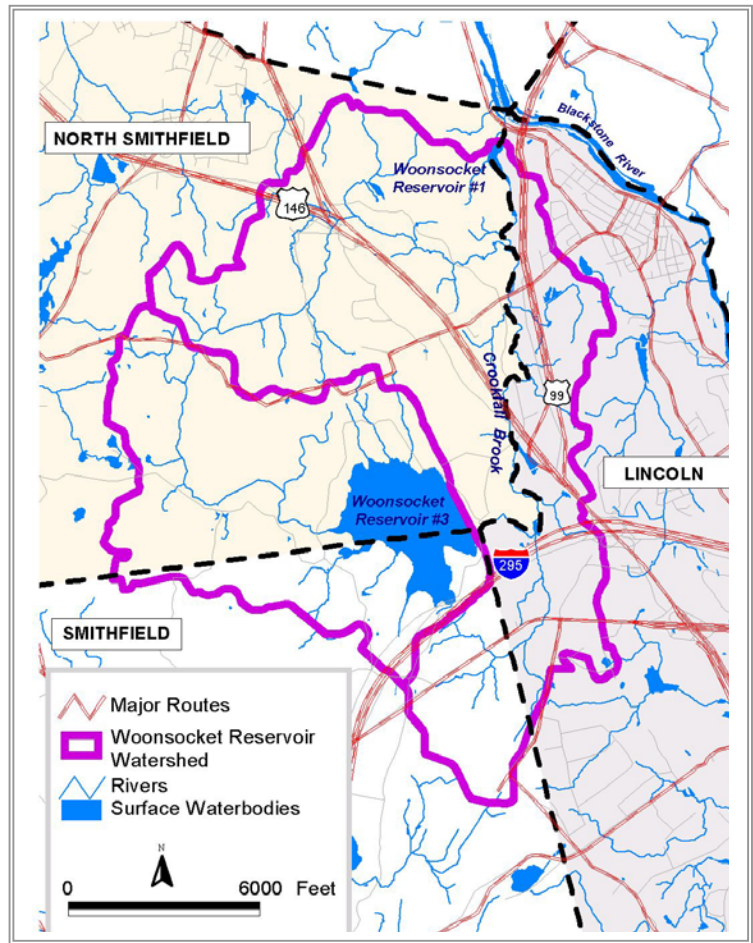
A number of major transportation routes traverse the watershed, including State Routes 99, 295 and 146. Hazardous spills, highway runoff and road salts present on-going concern. Over 20 percent of the watershed is developed with higher intensity land uses such as commercial and industrial development. Hazardous spills, highway runoff and road salts present an ongoing concern. Over 20 percent of the watershed is developed with higher intensity land uses such as commercial and industrial business.

There is significant development potential, including an additional five million square feet of commercial or industrial development. The number of residential units with on-site waste-water disposal systems could also increase substantially, creating further pollution risk to water quality unless wastewater treatment systems are properly managed given severe soil constraints in the watershed.

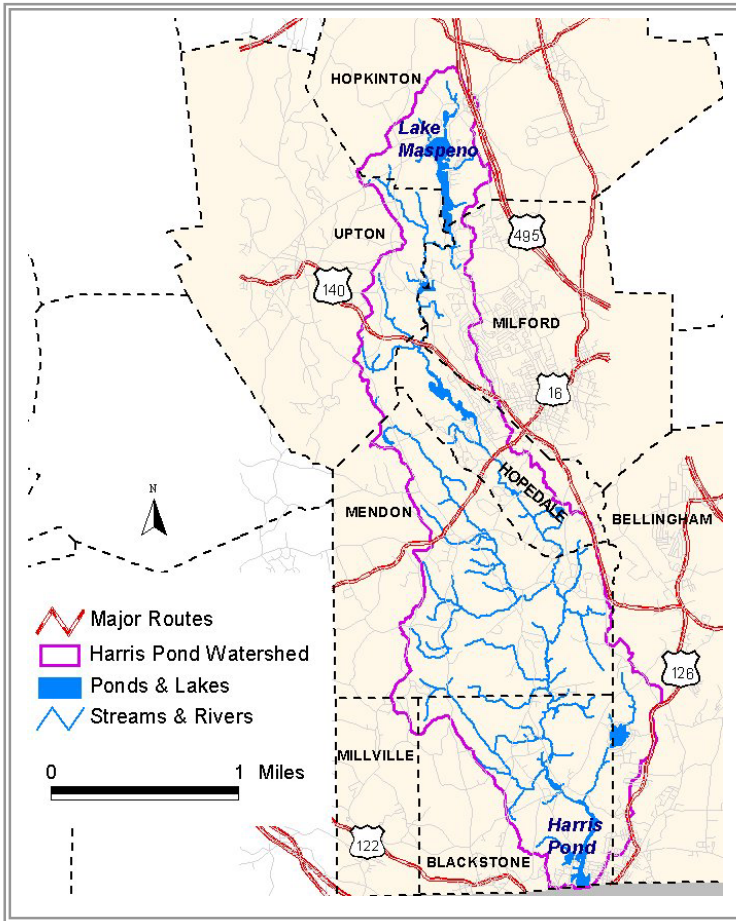
Woonsocket Reservoir #3 Watershed

The 1,858-acre watershed for Reservoir #3 is located in the towns of Smithfield and North Smithfield, Rhode Island. Reservoir #3 is the main source of water for the distribution system. The watershed is largely undeveloped and water quality is high. The City of Woonsocket owns approximately 30 percent of the watershed. Both Smithfield and North Smithfield have adopted large lot zoning to further protect the reservoir. However, development potential is still high in the watershed. Residential development could increase dramatically, along with pollution risk from increased runoff and septic systems. The watershed for Reservoir #3 is also traversed by State Route 295, which has led to elevated levels of sodium in the reservoir.

Map 2: Woonsocket Reservoir Watersheds



Map 3: Harris Pond Reservoir Watershed



The Harris Pond Reservoir Watershed

Harris Pond Reservoir is located in Blackstone, Massachusetts on the border with Woonsocket, Rhode Island. It is a narrow, largely shallow waterbody that is used only during dry periods to augment the Rhode Island reservoir system. The watershed for the reservoir is approximately 21,260 acres in size, and extends into portions of eight municipalities. Over half of the watershed is forested. Land use activity is primarily residential development (25%) and agricultural (6%).

1.3 Summary of Existing Conditions

As a first step in evaluating potential pollution risks in the assessment study areas, this section summarizes existing, readily available information on water quality concerns, pollution sources, and existing management practices. This overview has several purposes:

- To insure that the assessments build on existing information;
- To highlight the most valuable or vulnerable water resources;
- To provide a basis for refining water supply system management plans, wellhead protection plans and town water resource protection goals and priorities;
- To provide a baseline for reviewing progress in water resource protection efforts and for establishing new watershed management or groundwater protection strategies.

This summary is drawn from information sources such as water supply system management plans, municipal plans and ordinances, water quality monitoring data, and input from state and municipal officials, water suppliers, and other participants in these assessments. Key features of this water quality status check are summarized below.

Water Quality Goals and Water Resource Protection Strategies

The City of Woonsocket is currently preparing an updated Water Supply Management Plan to be submitted to RI HEALTH and the Water Resources Board. The plan will identify potential sources of contamination within the watersheds of the three reservoirs, as well as a Water Quality Protection Plan recommending strategies for enhancing source water protection. Woonsocket Water is also working with the Rhode Island Water Resources Board to address low flow conditions in the Crookfall Brook.

The City of Woonsocket Water Department maintains an active land acquisition program. The department has recently purchased 100 acres of riparian land along Crookfall Brook in the Reservoir #1 watershed. An emergency pipeline has also been constructed between Reservoir #3 and Reservoir #1 in the event of contaminant problems in the Crookfall Brook. The department also reviews and provides comment on development plans submitted to watershed towns, including the Town of Blackstone. To enhance water quality protection efforts, Woonsocket Water samples raw water weekly throughout the reservoir system.

The towns of Smithfield and North Smithfield, Rhode Island have both taken proactive measures to enhance the long-term protection of water quality in the Woonsocket Reservoir system. Both towns have adopted large-lot zoning in the watersheds of Reservoir #1 and #3.

The Town of Smithfield has completed a Greenspace Survey to help enhance natural resource protection efforts. The Town of North Smithfield has a law to minimize topographical changes for new development sites, and is also concerned with issues related to the siting of new septic systems in problematic soil types. The town of Blackstone, Massachusetts is considering sewer extensions for homes around the Harris Pond reservoir. Phase II Stormwater Regulations and planning will provide watershed towns with the opportunity to focus attention on improving stormwater runoff from urban and highway developments.

2. ASSESSMENT METHOD

This assessment uses a screening-level approach to evaluate pollution risks in water supply watersheds and recharge areas. The focus is on identifying land use and natural features where pollutants are most likely to be generated and move to drinking water supplies. This approach takes advantage of existing information sources, including the extensive computer-mapping database readily available to water supply managers and municipalities through the Rhode Island Geographic Information System (RIGIS). Computer mapping provides the chief tool to identify, analyze, and display potential pollution threats. Assessment results are intended to generate information water suppliers and local officials can use to make land use decisions that reduce pollution risks to water supplies.

This chapter briefly summarizes our approach in assessing the susceptibility of water supply source areas to contamination. It includes:

- A brief overview of the two-level assessment approach used in RI for small and major supplies,
- Background on the challenges of evaluating water quality impacts from land use in source water areas;
- Description of the assessment approach using watershed features to evaluate pollution risk, with outline of data source,
- Methods and assumptions in creating the land use database for current conditions and future projections; and
- Steps in conducting the assessment, and use of assessment products.

This section is designed to provide an overview of assessment issues and our approach. Complete documentation of assumptions and methods are provided in the Appendix to this report.

2.1 Two Levels of Assessment

The RI Source Water Assessment program uses a two-tiered assessment strategy developed by RI HEALTH and URI Cooperative Extension in partnership with an advisory Technical Committee. This provides a consistent review process for all water supplies while ensuring a more thorough assessment of the largest and most productive community supplies.

Basic assessment and ranking - all water supplies

All water supplies were assessed and ranked according to their susceptibility to contamination. The assessment considers potential sources of pollution and natural features that promote movement of pollutants, to include, for example: high intensity land use, number of mapped potential pollution sources such as underground storage tanks, location of potential sources by soil type and proximity to the supply, and existing water quality. A simple scoring system assigns a

MANAGE is the **M**ethod for **A**ssessment, **N**utrient-loading, and **G**eographic **E**valuation of watersheds and groundwater recharge areas. This screening-level pollution risk assessment method uses computerized maps known as Geographic Information Systems (GIS) to compile, analyze, and display watershed and recharge area information.

The assessment incorporates a suite of pollution risk factors including:

- Map analysis locating likely pollution “hot spots.”
- Land use and landscape features summarized as watershed health “indicators”.
- Nutrient loading estimates comparing potential pollution sources associated with different land uses.

This method incorporates a simple mass balance hydrologic spreadsheet but is a collection of assessment techniques rather than a packaged model. MANAGE was developed and is applied by URI Cooperative Extension as a watershed education and decision support tool for use with Rhode Island communities.

For more information go to:

<http://www.uri.edu/ce/wq/mtp/html/manage.html>.

“Rhode Island’s groundwater resources are extremely vulnerable to contamination because of the generally shallow depth to groundwater, aquifer permeability, and the absence of any confining layers. Preventing groundwater pollution must be a priority if the long-term quality of the state’s groundwater resources is to be protected.

The focus of state water pollution concerns has shifted from specific discharges or ‘point’ sources.... Maintaining or restoring state waters requires that non-point sources of pollution be addressed.”
RIDEM 2002

numerical value, which categorizes the water supply’s overall risk of pollution from low to high. Results of this basic ranking for the source water areas are included in the appendix of this report.

Comprehensive assessment - major community supplies

In addition to the basic mapping and ranking of pollution sources, major community water systems supplying more than 50 million gallons per day also receive a more in-depth assessment using the URI Cooperative Extension MANAGE pollution risk assessment method. This makes more extensive use of computer map databases, in order to evaluate land development patterns and landscape features posing the greatest risk to local water resources. The additional analyses may include any or all of the following:

- Calculation of percent impervious area, percent forest and wetland, land use characteristics in shoreline buffers, and other factors.
- Development of a hydrologic and nutrient loading budget estimating average annual nitrogen inputs to surface runoff and groundwater leaching; phosphorus to surface runoff.
- Forecast of potential threats using a “build out” analysis to evaluate future growth based on zoning.
- Comparison of the relative effectiveness of alternative pollution controls in reducing pollutant inputs using nutrient loading estimates.
- Public involvement in the assessment by field checking and updating land use maps; and reviewing and commenting on draft results.

Both the basic and comprehensive assessment are fully consistent with each other as the basic ranking was developed using elements of the MANAGE method. This technical report includes the combined results of both the basic and in-depth assessment.

2.2 Background on assessing water quality impacts

Pollutants most likely to contaminate drinking water

According to the RI Department of Environmental Management’s report to congress on the state’s water quality, pollution from routine land use activities is the greatest threat to water quality outside of urban areas (RIDEM 2002). Stormwater runoff, septic systems and erosion are the number one threat to the State’s drinking water supplies and other high quality fishable and swimmable waters. Bacteria, nutrients and sediment associated with these sources have adversely affected drinking water reservoirs, inland lakes and ponds, and coastal shell fishing waters. In fact, pollutants from land use activities are the main cause of new shellfish closures (RIDEM 2002).

Land use activities are also the primary threat to groundwater. The most frequently detected contaminants in RI public wells, excluding

naturally occurring compounds, are MTBE, a highly soluble gasoline additive, and the widely used chemical solvents such as trichloroethene and tetrachloroethane. According to RIDEM's 2002 report on the state's waters, between 15 and 30 percent of all RI public wells have been found to contain low levels of these volatile organic solvents (VOCs). Petroleum products from leaking underground storage tanks are the leading cause of new groundwater contaminant incidents. Nitrate is also a concern as it is often detected at concentrations far above natural background levels. Annually, almost 90 percent of wells have nitrate concentrations less than 3 mg/l, with only five wells slightly exceeding the 10 mg/l nitrate standard. Because even 3 mg/l is more than 10 times the naturally occurring level, this is a serious concern in coastal areas where shellfishing habitat can be impaired at total nitrogen levels as low as 0.35 mg/l (Howes et.al.1999). This low level is near the natural background concentration of groundwater in undeveloped areas of Rhode Island.

Because most land in a reservoir watershed or overlying a well head protection area is often privately owned and not controlled by the water supplier, source water areas are just as susceptible to land use pollutants unless local watershed protection regulations are adopted and enforced. With Rhode Island's population moving out of urban centers to new homes in outlying suburbs and rural source water areas, the potential for water quality impacts to drinking water supplies is greater than ever.

Challenges of measuring land use impacts

Field monitoring and modeling are two basic approaches, often used hand-in-hand to evaluate effects of land use activities on water quality. Field monitoring data provides the most solid information to assess water quality conditions and identify pollution sources. However, field studies of even small watersheds is complex and time consuming, especially when compared to traditional sampling of discharge pipes. Pollutants from multiple sources such as over fertilized lawns, storm drains, and septic systems enter streams and groundwater at many locations scattered throughout a watershed, making it difficult to accurately evaluate impacts. In addition, any one sample represents only a snap shot in time. Regular sampling is needed to separate variations due to weather or season and to establish trends.

To complicate matters, mounting evidence points to basic changes in hydrology brought about by development as a root cause of water quality problems. Increased runoff with construction – almost impossible to avoid unless strictly controlled, prevents rainwater from naturally infiltrating into the ground. Water running off the ground surface escapes treatment that would have occurred through slow

Threats to lakes and ponds

22% of RI lakes and ponds are not clean enough for healthy aquatic life or swimming due to bacteria, nutrients, low oxygen or metals.

The major sources are:

- *Runoff*
- *Septic systems*
- *Agricultural fertilizers*
- *Water withdrawals and other changes in flow.*

RIDEM's assessment of lakes and ponds includes 42 drinking water supply reservoirs. Of these reservoirs, 99 percent are meeting drinking water standards. In most areas, however, this assessment does not include information on upstream tributaries due to lack of data.

RIDEM 2002

“It is generally recognized that protecting the quality of drinking water is cheaper than treating water after it has been contaminated, and more certain than seeking new sources.”

RI HEALTH Source Water Assessment Plan, 1999.

movement through soil. The combined result is reduced groundwater recharge and degraded surface water quality. Monitoring is a challenge given the wide range of physical, chemical and biological impacts that are possible. Finally, even where significant resources are devoted to field studies, results are often inconclusive. For example, DEM scientists have conducted extensive field studies of impaired surface waters only to conclude that “in the majority of cases there is not enough data to link the causes of non-support to actual sources of pollution” (RIDEM 2002).

Watershed scale models provide an alternative or supplement to field sampling. Modeling uses information regarding specific features of a study area, such as soil types and water flow patterns, with research data about pollutant interactions. It then makes simplifying assumptions to apply these facts to the whole study area, creating a picture of how a study area functions. Modeling is frequently used to estimate sources of pollutants, especially when sparse or inconclusive field data indicates the amount of pollutant present without leading to a verified source. Modeling is used to extrapolate from known data points to make assumptions about the larger study area, thus gaining a “big picture” perspective needed to evaluate cumulative impacts. And modeling is a valuable tool in testing.

It is important to remember that all models generate results that are only as good as the input values. Results of both simple and sophisticated models are estimates. Complex models may not generate more useful data for management, especially when comparing relative differences is adequate for choosing pollution controls (Center for Watershed Protection 1998). For both simple and complex models alike, great uncertainty surrounds the fate and transport of pollutants in the environment. Because of these data gaps, quantifying a direct response between pollution sources and resulting water quality in a down gradient well or surface reservoir is extremely complex and filled with uncertainty. In the Waquoit Bay watershed in Cape Cod, Massachusetts, for example, researchers modeling watershed nutrient dynamics concluded that even in heavily studied watersheds with an extensive field monitoring database, the relationship between pollution sources and resulting water quality was the most difficult to estimate (Weiskel, 2001). These unknowns currently preclude researchers from setting up a direct relationship between pollution sources in a watershed and resulting impact of those pollutants in receiving waters.

2.3 Approach: Linking landscape features to pollution risks

Given the difficulties in assessing land use impacts through field monitoring and conventional water quality models, the RI Source

Water Assessment Program relies on accepted pollution risk factors established by the U.S Environmental Protection Agency (EPA) and other scientific organizations to identify and rate pollution threats (EPA, 1996; Chesapeake Bay Foundation, 2001; Maryland Department of Environmental Protection, 2002; Nolan et.al., 1997). Given that water quality is a reflection of the land use activities and physical features of a watershed or recharge area, this approach relates the characteristics of the watershed to potential sources of pollution that may lead to impaired water quality through “cumulative” effects of increased pollutant inputs and hydrologic stresses with increased impervious and surface water runoff. These indices couple high quality spatial data on a suite of landscape features with our current understanding of land use impacts to evaluate and compare risks to water supplies. Our focus is on identification of high risk situations that could lead to impaired water quality and identification of appropriate management options to prevent degradation.

The relationship between watershed characteristics and water quality is grounded on basic, widely accepted concepts about movement of water and pollutants applicable to both surface stormwater flow and leaching to groundwater (Dunne and Leopold, 1978; National Academy of Sciences, 1993). These principles include:

- Most water pollution comes from the way we use and develop land.
- Intensive land use activities are known to generate pollutants through for example, accidental leaks and spills, septic system discharges, fertilizer leaching, or runoff from impervious areas.
- Forest, wetlands, and naturally vegetated shoreline buffers have documented ability to retain, transform, or treat pollutants.
- Natural landscape features such as soil types and shoreline buffers determine water flow and pollutant pathways to surface waters and groundwater.

Land use pollutants are therefore not completely diffuse across a landscape but are associated with recognizable patterns of intense land use in combination with hydrologically active sites, such as areas of high water table and excessively permeable soils, where pollutant movement is more likely given soil type and proximity to receiving waters. Recent findings by the U.S. Geological Survey document the validity of using this approach to assess pollution risk. In an extensive national review comparing water quality of streams and aquifers with watershed characteristics, USGS researchers (Nolan et.al., 1997) concluded that water quality is the result of multiple variables, not pollutant inputs alone. This study demonstrated that a combination of land use and landscape characteristics were highly reliable in identifying settings at greatest risk of contamination.

Threats to Groundwater

Ninety percent of Rhode Island groundwater is suitable for drinking but low-level organic contaminants have been found in 15 – 30% of wells tested. The most common contaminants are petroleum products, organic solvents, nitrates and pesticides.

The major sources are:

- *Underground storage tanks*
- *Hazardous and industrial disposal sites*
- *Spills*
- *Landfills*
- *Septic systems*
- *Road salt*
- *Fertilizers and pesticides*

RIDEM 2002

Using these accepted concepts, areas of high pollution risk can be mapped to provide a rapid, first-cut assessment to screen pollution risks and set a direction for additional analysis or management. The indicators used in this source water assessment are standard measures commonly used in similar watershed analyses to evaluate a waterbody's susceptibility to degradation. These indicators include for example, the factors listed below.

Type of Pollution Risk Indicators

The presence of likely pollution sources and stressors.	<ul style="list-style-type: none"> ▪ Percent high intensity land use ▪ Percent impervious cover ▪ Estimated average annual runoff and nutrient loading
Landscape features promoting pollutant movement to surface or ground waters.	<ul style="list-style-type: none"> ▪ Location and extent of highly permeable soils ▪ Location and extent of shallow water table networks. ▪ Developed shoreline buffers
Waterbody features that amplify vulnerability to contaminants.	<ul style="list-style-type: none"> ▪ Aquifer type ▪ Reservoir depth and flushing rate ▪ Existing water quality condition.

More detailed information about pollution risk indicators and mass balance modeling methods used in this assessment are provided in the results section of this report, with more extensive information also provided in the appendix.

Data Sources and Outputs

The assessment results are based on five types of information either used or generated by the risk analysis.

- Review of existing water supply management plans, municipal plans and ordinances, state reports, Rhode Island Department of Health water quality monitoring data.
- Local input from municipal officials, water supply representatives and assessment volunteers for important information on existing conditions and concerns.
- Map analysis of land use, soils, known pollution sources and other watershed features to systematically locate probable pollution “hotspots” using the RI Geographic Information System (RIGIS) database. Data derived from the RIGIS database is intended for planning-level analysis only.
- Land use and soils acreages extracted from the RIGIS map database, compiled using a separate spreadsheet and summarized as averages for each study area.
- Modeled estimates of average annual runoff, groundwater recharge, and nutrient loading as measures of cumulative pollution risk. This is a standard mass balance method similar to

those widely used in comparable applications elsewhere including Cape Cod and the New Jersey Pine Barrens.

2.4 Database Development

Land use derived from the RIGIS database provides the main source of data for land use. Complete documentation of methods used to create a land use database, and detailed results for each study area, is included in the Appendices. This includes a land use breakdown by soil type for each study area, land use characteristics of shoreline zones, and estimated future land use based on buildout projections.

Land Use Inventory

The land use data for this analysis was derived from the 1995 RIGIS coverage, using twenty-one land use categories consolidated from 32 mapped categories based on similar use, intensity, and pollution risk. Land use maps were updated with major changes and corrections identified by assessment mapping volunteers based on their knowledge of the area and windshield surveys. The number of dwelling units was estimated from the RIGIS residential land use categories. Population was based on 2.4 persons per dwelling unit, unless otherwise determined. The town sewer service district was updated when possible using sewer line information provided by the towns. Without parcel level data on the number of homes actually connected to the sewer line, we assumed homes within 500 feet are reasonably likely to take advantage of public sewers. Based on the land area outside the sewer district, we estimated the number of houses with septic systems per acre based on RIGIS residential land use categories.

Build-out Methods and Assumptions

To estimate future development potential we conducted a build-out analysis for each study area individually. Using town zoning maps as the future land use scenario, we assumed all privately owned and unprotected land would be eventually developed based on the underlying zoning district. We did not estimate a time frame for this growth. In calculating the potential change in future land use acreages we made the following assumptions:

- All permanently protected open space will not be built upon.
- New development density will adhere to current zoning.
- Most privately held open space (Scout Camps, golf courses, rod & gun clubs) will not be developed further.
- Areas with wetlands, bedrock on surface, and very high water table soils (>1.5') will not be built upon.
- Surface waters and their tributaries will retain undisturbed buffers of 200 feet.

2.5 Assessment Steps

The following steps briefly outline the process used to involve the public and conduct the assessment.

1. **Organize an assessment group.** In each study area, RI Health and URI Cooperative Extension worked with the water supplier and municipal officials to coordinate and schedule the assessment, identify key organizations to be involved, and recruit local volunteers to participate in the assessment. *Mapping volunteers* were trained to field check land use maps and inventory potential sources of pollution. A small group of *Assessment volunteers* – primarily town staff and board members – reviewed draft results, provided input on local resource issues, and made suggestions for management controls.
2. **Create land use and natural resource inventory maps for display and analysis.** The study area boundaries were selected in cooperation with the water supplier and/or town officials. At a minimum this included the water supply watershed or wellhead protection area but in some cases was expanded to include other areas for future planning purposes. In cooperation with local volunteers, RIGIS land use maps were updated with major land use changes and known or suspected pollution sources. A future land use/zoning map was created using town coverages or digitized from zoning boundaries provided by the town. The basic coverages used in the assessment include land use, soils, sewer lines (buffered to create an area coverage) and surface water buffers (200 feet).
3. **Briefly summarize existing conditions.** This is a brief overview, based on available plans, monitoring data, and water quality issues identified by water suppliers, municipal officials and assessment volunteers. In addition, the RI HEALTH public well database was analyzed and results for the past five years were summarized and ranked using the RI Source Water Assessment ranking.
4. **Identify and rank pollution risks based on current land use.** Using land use, soils, and other mapped data, the MANAGE model uses a spreadsheet to generate summary statistics, or “indicators” such as percent impervious area. The same spreadsheet calculates a hydrologic budget and nutrient-loading estimate as an additional indicator of pollution risk. Basic land use characteristics, number of potential pollution sources, and monitored data are factored into a pollution risk rating for each source water area.

5. **Map high-risk pollution “hot-spots” for the whole wellhead protection area or reservoir watershed.** Mapped hot spots help to target the location of potential pollution sources by combining high intensity land uses that are known pollution sources with soil features where pollution movement is most likely.
6. **Predict future land use and population change through a “build-out” analysis for each study area.** This map-based analysis, projects the type and location of growth assuming all unprotected land is eventually developed based on municipal zoning and future land use maps created in step 2.
7. **Forecast future land use impacts to water resources using the “build-out” analysis.** Pollution risk indicators and a hydrologic budget/ nutrient loading for future land use are estimated by re-running the spreadsheet analysis (Step 4) using the future land use map.
8. **Summarize and rank pollution risks.** The RI Source Water Assessment Ranking was used to summarize and rate pollution risks for each water source, with results averaged as one ranking for suppliers having more than one source of supply. This basic rating is used for all public water supplies in Rhode Island. For major community supplies additional risk factors, such as impervious estimates, nutrient loading and build out results, were also identified and rated.
9. **Evaluate effectiveness of management options to reduce pollution risk.** Using the MANAGE spreadsheet, we estimated the relative change in runoff and nutrient loading that could be expected under different pollution control practices. Because this analysis is limited to change in nutrient loading only, a wide range of management options were identified based on accepted current best pollution prevention practices.
10. **Make results available to water suppliers, local decision makers and the public.** Final results are summarized as a technical report and a 4-page full color fact sheet. These are available through the RI HEALTH and URI Cooperative Extension web sites. Fact sheets are suitable for direct mail to watershed residents by water suppliers or municipalities. Although it is beyond the scope of the source water assessment program to develop detailed action plans, reports include recommendations focusing on pollution prevention. Map analyses are made available as large-format maps. In cooperation with RI HEALTH, final summary results will be presented to town officials, with presentations scheduled at the convenience of town councils and planning/zoning boards.

Source Water Protection Savings

Rhode Island public water suppliers are estimated to have saved **\$2,755,180** in a three-year period through "monitoring waivers" granted by US EPA based on source water protection plans.

Where a supplier has a source water protection plan in place, where certain pesticides and organic chemicals are not used in a source area or state, and where sampling data also confirms the supply is not vulnerable, water suppliers may reduce monitoring. This means money saved can be better spent protecting against actual threats.

Source: Technical and Economic Capacity of States and Public Water Systems to Implement Drinking Water Regulations, Report to Congress, September 1993, as reported by New England Interstate Water Pollution Control Commission, 1996.

Applying Results

In addition to meeting EPA requirements, source water assessments have many practical applications. One key benefit for water suppliers is to support monitoring flexibility. Based on assessment results, RI HEALTH may grant monitoring waivers to a supplier for specific contaminants that are not found within the source area. This can amount to savings of several hundred dollars per year for each system that receives waivers. The actual amount depends on the specific testing requirements that may be waived. The state can also use assessment results to require additional monitoring for supplies at risk or to earmark grant money for pollution prevention programs for the systems at highest risk (RI Health 1999).

Assessment results can also provide a basis for future watershed assessment. The GIS map inventory of land use risk factors and mapped pollution sources establish a database that can be used to update watershed protection plans. In source water areas where field monitoring data is limited, assessment results may be used to locate high risk areas for additional field monitoring, to support design of expanded field monitoring, or identify areas where specialized field studies or modeling is warranted.

Because the assessment focuses on potential land use impacts, assessment results have been used to strengthen local land use planning and regulation. The following are, for instance, a few ways RI communities have used assessment results:

- Update town water quality goals and priorities for action. Towns have incorporated assessment findings and recommendations into town comprehensive plans, water supply or wastewater management plans, and other watershed plans.
- Support adoption of wastewater inspection and upgrade ordinances, and develop standards for performance of onsite systems through zoning overlay districts. Information generated on pollution risks and suitability for onsite wastewater treatment has been used to build support for better wastewater management and to determine level of improvement needed.
- Create and distribute public information materials, incorporating assessment results and maps, targeting high risk areas.
- Use map products generated in routine town planning and project review.

Assessment recommendations incorporate current accepted management practices focusing on pollution prevention. Although these were developed with local input, recommendations in this report are not truly town priorities unless incorporated into town plans, capitol improvement budgets, and ordinances. The next step is for local officials to review assessment results in light of current policies and management practices, and develop their own list of protection priorities with implementation plan.

