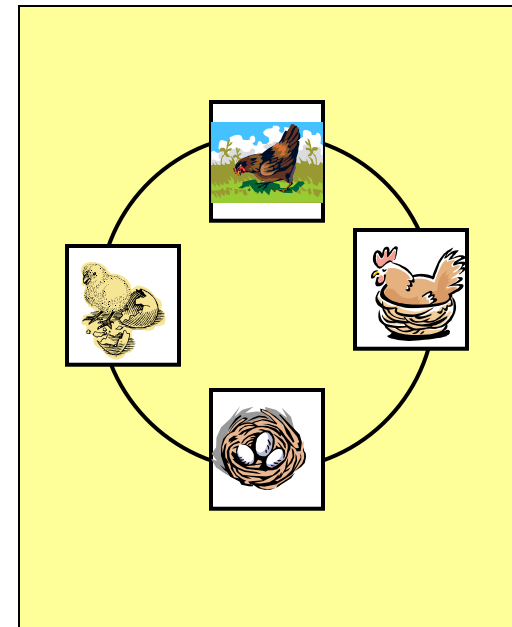
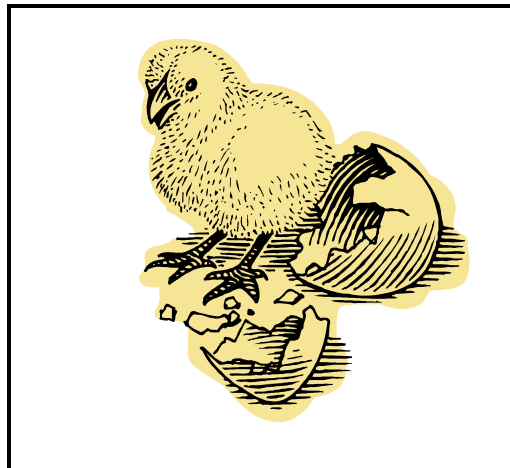
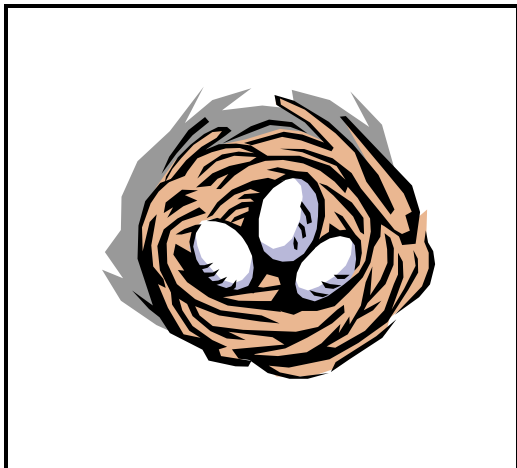
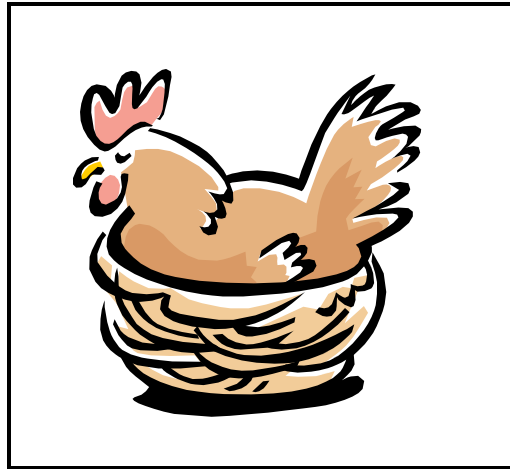
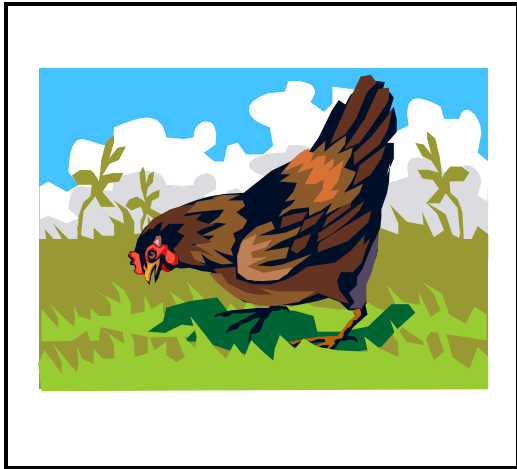


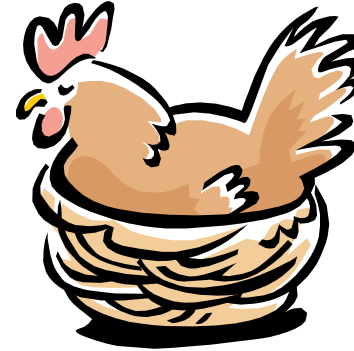
**CELS Outreach Center**  
**Learning from nature – Lesson planning aid**  
**K - 2**

**Classroom Aid #: LS1(11) - 1**  
**Revised: 11/22/06**

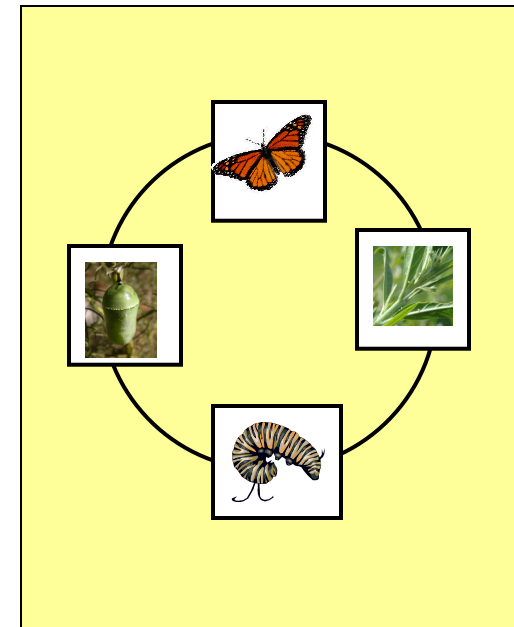
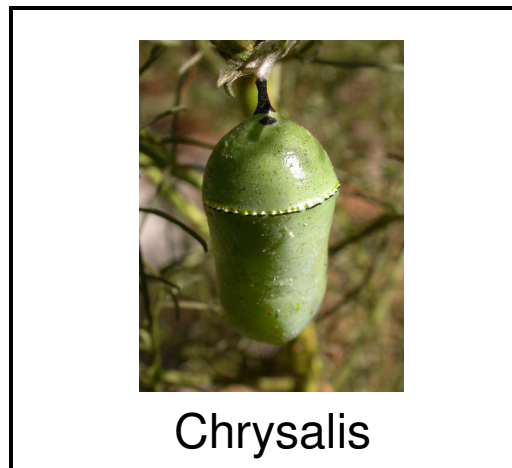
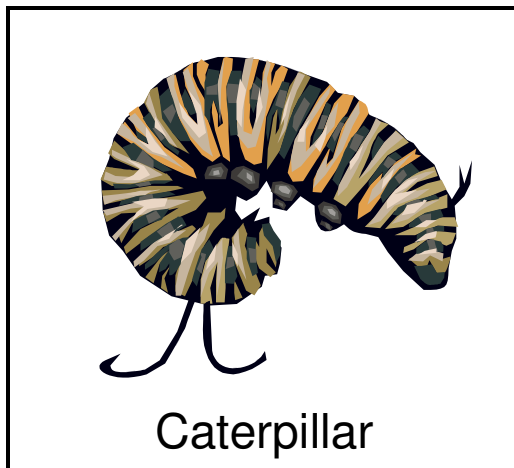
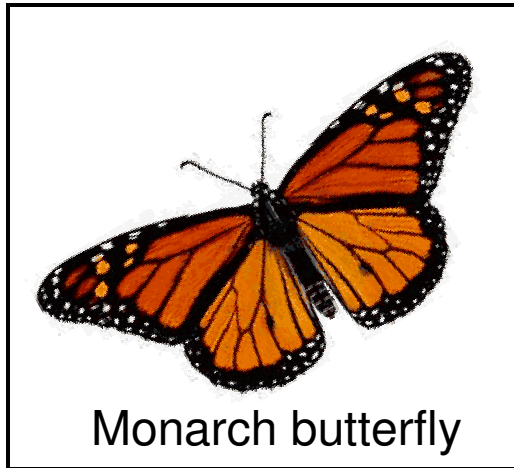
**TEACHERS:** Ask students to draw a large circle on a piece of construction paper. Then have them cut out the pictures below and assemble them on the circle in the correct order to show the life cycle of the chicken. See the next page for the student version of this classroom aid.



Name: \_\_\_\_\_

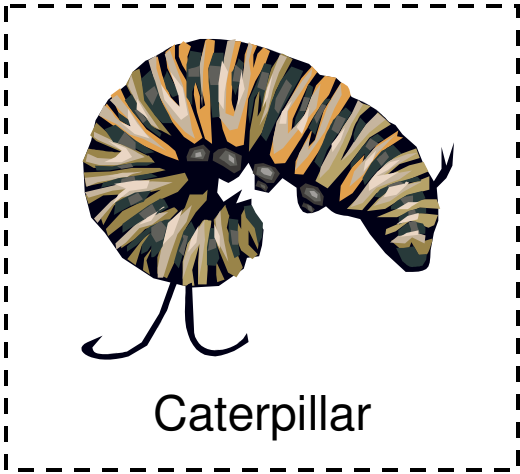
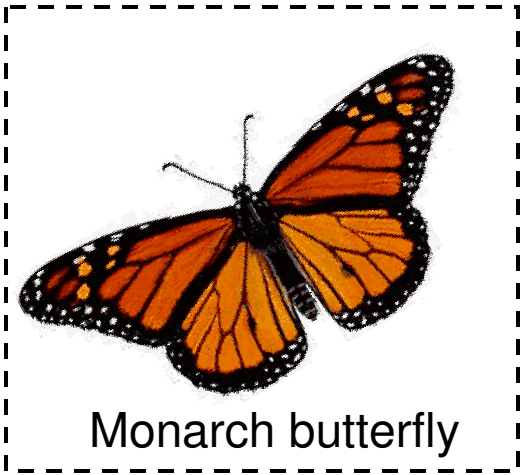


**TEACHERS:** Have students draw a large circle on a piece of construction paper. Then have them cut out the pictures below and assemble them on the circle in the correct order to show the life cycle of the monarch butterfly. See the next page for the student version of this classroom aid.

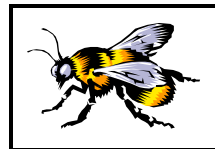
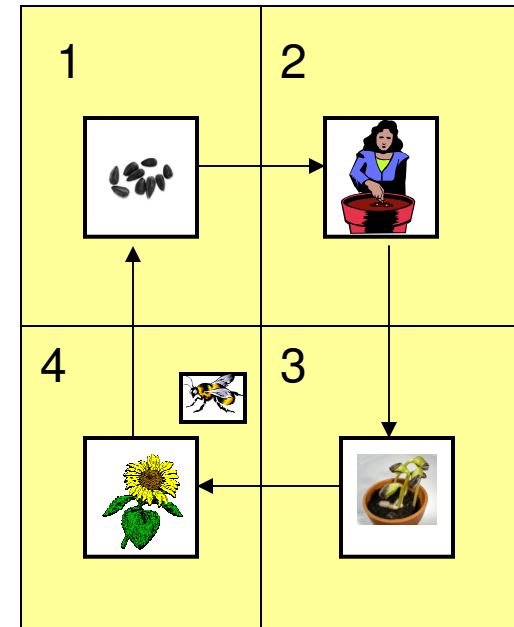


\*Picture taken from [www.wikipedia.org](http://www.wikipedia.org)

Name: \_\_\_\_\_



**TEACHERS:** Have students fold a piece of construction paper into 4 sections. Number the sections 1 through 4 as shown below. Cut out the pictures and assemble them on the page in the correct order to show the life cycle of a sunflower plant. At what stage in the plant's development is the bee important? Draw arrows between the boxes.



Name: \_\_\_\_\_

