

WHAT ARE SUSTAINABLE PLANTS?

A sustainable plant is disease and insect-resistant and requires minimal inputs of pesticides, water, fertilizers and maintenance to remain attractive and useful in the landscape. Examples of sustainable plants include new, disease-resistant crabapples and flowering dogwoods. While many older cultivars are vulnerable to a host of diseases and require repeated chemical applications to remain healthy, these new cultivars will flourish in the landscape without pesticides, saving time and money as well as protecting the environment.

Take notes on the plants as you walk through the URI Botanical Gardens. Remember that the species and the variety may be important for disease or insect resistance. Keep in mind that a sustainable landscape requires more than just the right plant; proper landscape planning and design, healthy soil, the right plant in the right place, efficient water use and appropriate maintenance will all contribute to a sustainable, environmentally friendly landscape.

URI'S BOTANICAL GARDENS

Our beautifully designed landscape features 4.5 acres of evergreen plantings, perennial and annual flowering beds, native plantings, a mini-orchard, and water gardens. Garden plantings were selected from the URI publication Sustainable Trees and Shrubs for New England. The Botanical Gardens are open to the public every day. Call us to arrange a group tour.

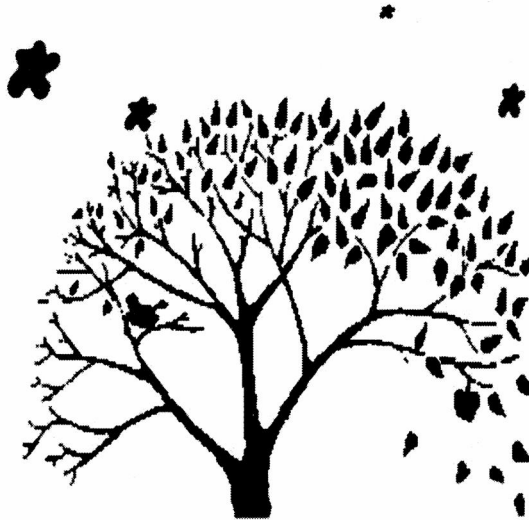
The URI Botanical Gardens are managed and funded by the URI Cooperative Extension and URI's College of the Environment and Life Sciences. Financial support is provided in part by an endowment fund established by the Rhode Island Nursery and Landscape Association (RINLA).

University of Rhode Island, United States Department of Agriculture, and local governments cooperating.

Cooperative Extension in Rhode Island provides equal program opportunities without regard to race, age, religion, color, national origin, sex or orientation, creed or disability. For sign language interpretation, personal FM systems, disability assistance, please indicate same on the bottom of the registration form. At least 72 hours notice is required.

UNIVERSITY OF RHODE ISLAND COLLEGE OF THE ENVIRONMENT AND LIFE SCIENCES

OUTREACH CENTER



FALL GARDENING SCHOOL AT U.R.I.

GARDENING BASICS IN THE HOME LANDSCAPE

University of Rhode Island
CELS Outreach Center
3 East Alumni Avenue
Kingston, RI 02881-0804
(401) 874-2900

Cooperative Extension
US Department of Agriculture
UNIVERSITY OF RHODE ISLAND
KINGSTON, RI 02881-0804

Registration Form

Course fee: \$120 per person (includes all reference materials).

Registration limited to a maximum of 40 people on a first come, first served basis.

All classes take place from 6:00 pm to 8:00 pm

Name: _____

Mailing Address: _____

City: _____ State: _____

Zip: _____

E-mail: _____

(we will confirm only by email.)

Phone (Day): _____

Please make checks payable to "URI CE."

Mail to: Fall Gardening School
CELS Outreach Center
3 East Alumni Avenue
University of Rhode Island
Kingston, RI 02881

NOTE: No refunds will be given after September 22, 2008.



URI FALL GARDENING SCHOOL

Gardening Basics for the Home Gardener

Mondays 6-8PM

Roger Williams Park Botanical Center

September 22nd through October 27th



The University of Rhode Island will be offering a six-week evening class on Mondays, beginning September 22, 2008, and running through October 27. Classes will be held in Providence at the Roger Williams Park Botanical Center. Directions will be sent with the confirmation notice.

The course will be useful to both new and experienced gardeners. The class will be taught by URI Master Gardeners and staff from the CELS Outreach Center.

There are no prerequisites for this class other than the desire to become an environmentally aware gardener. The format will be lectures with a walking tour at the end. Come prepared with your problems and questions!

This course can be considered an introduction to the Master Gardener program administered by the University of Rhode Island Cooperative Extension.

COURSE SYLLABUS

Sept 22 Soils and Fertilizer Basics – Learn about RI soils and how to amend them. David Hughes, URI Master Gardener

Sept. 29 Vegetable Garden Management – we'll explore the basic methods to achieve an organic garden. We will also discuss the most common pests encountered. Rosanne Sherry, MG Coordinator

Oct 6 Perennials 101 – What you need to know about selection and maintenance to enjoy a successful garden. Jo-Ann Bouley, Education Coordinator RWP Botanical Center

Oct 20 Garden Skills – Common Pests and Organic Controls – What's bugging you in the garden? Learn about the many organic products available and how and when to use them. Bring a sample or photo of a problem you had this season. Rosanne Sherry

Oct 27 How to be a "Greener" Gardener – Learn about composting, conserving and protecting water resources. – Kate Venturini, Coastal Landscape Program Coordinator and Sejal Lanterman, Master Composter Coordinator

Saturday Special October 18 10AM-12PM
Houseplant Care and Botanical Center tour.
Start with a talk on Houseplant Care and Selection and then stroll with URI Master Gardener docents through the lush tropical greenhouses at the Botanical Center. Bring one problem houseplant for ID and problem solving.