


# Adjusting Screen Appearance

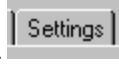
## Screen Resolution

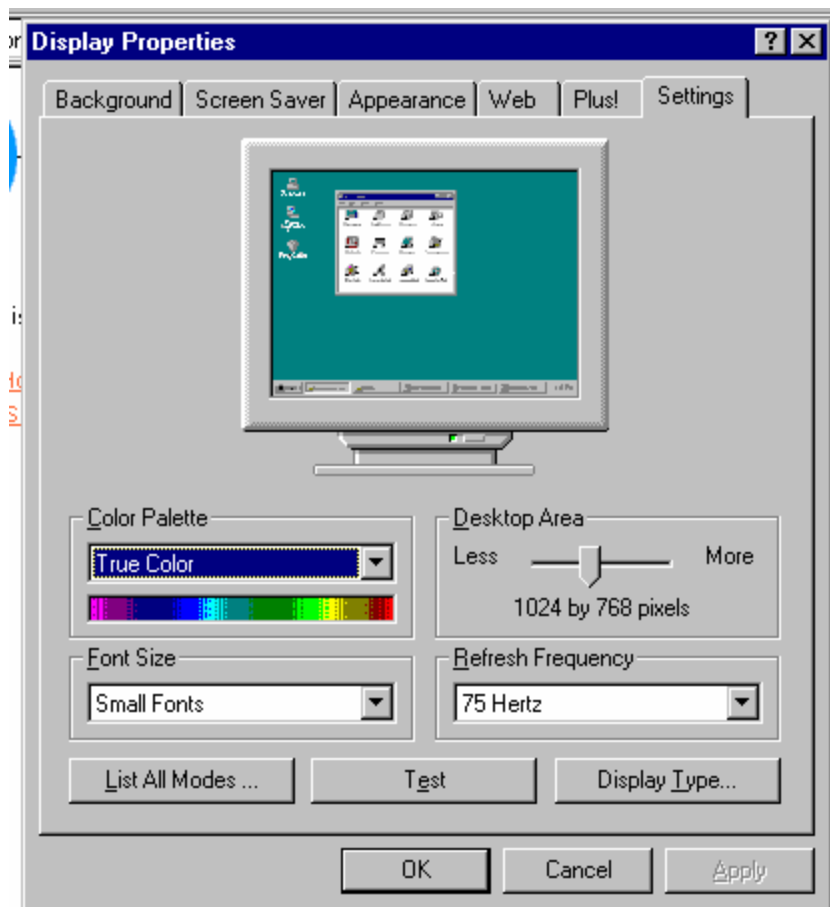
Adjusting the screen resolution on your machine may be helpful. It will reduce the need for scrolling on pages (not eliminating the need to scroll), but will also decrease the font size of everything on the screen.

Click on the Start button. 

Choose Settings, Control Panel. 

  
Click on the Display icon.

Choose the Settings tab. 



In order to change the screen resolution, you will need to adjust the scale in “Desktop Area.”

Most machines may be set to 1024 x 768 pixels

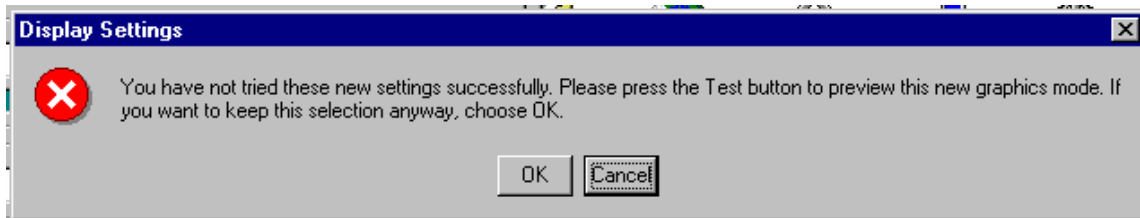
Increase the pixels.

Some machines are set up differently and will have various options regarding pixels.



Choose the  option after adjusting the pixels.

If you click OK or Apply without choosing Test, you will receive this warning message.

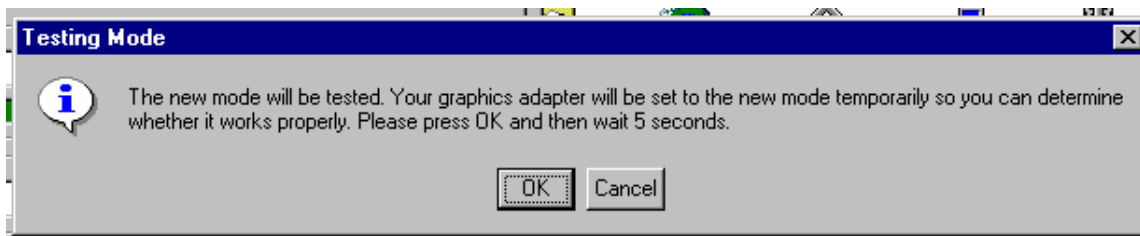


Clicking Cancel will return you to the Settings tab so you can choose Test.

Clicking OK will automatically black out your screen and then bring up a Color Gradient screen.



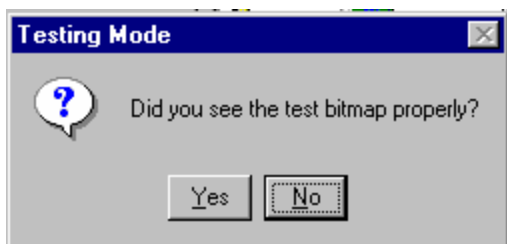
After choosing , you will receive this message:



Click OK.

This will show you a Color Gradient screen and will automatically return you to the Settings tab.

You will receive a Testing Mode message.



Click Yes.

Click 

Screens with adjusted Resolution

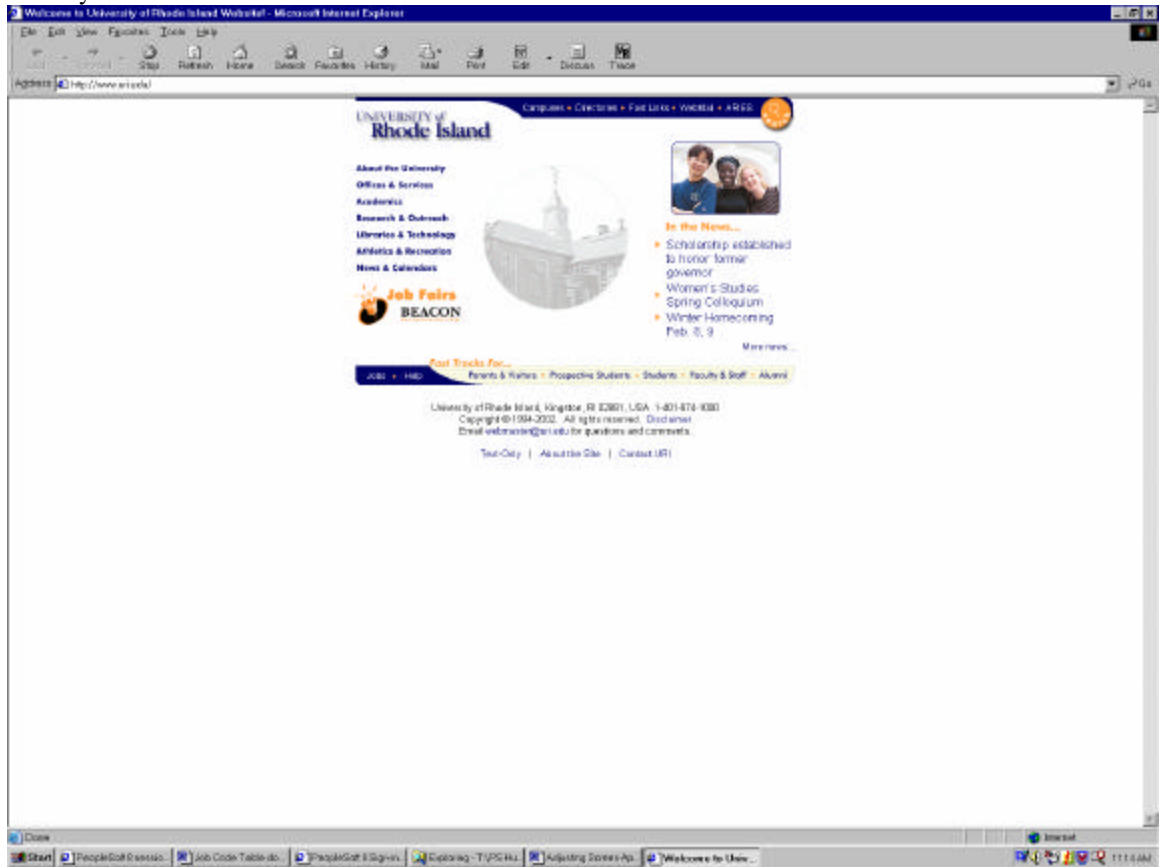
1024 by 768 (Most machines are set to this standard)



1280 by 1024

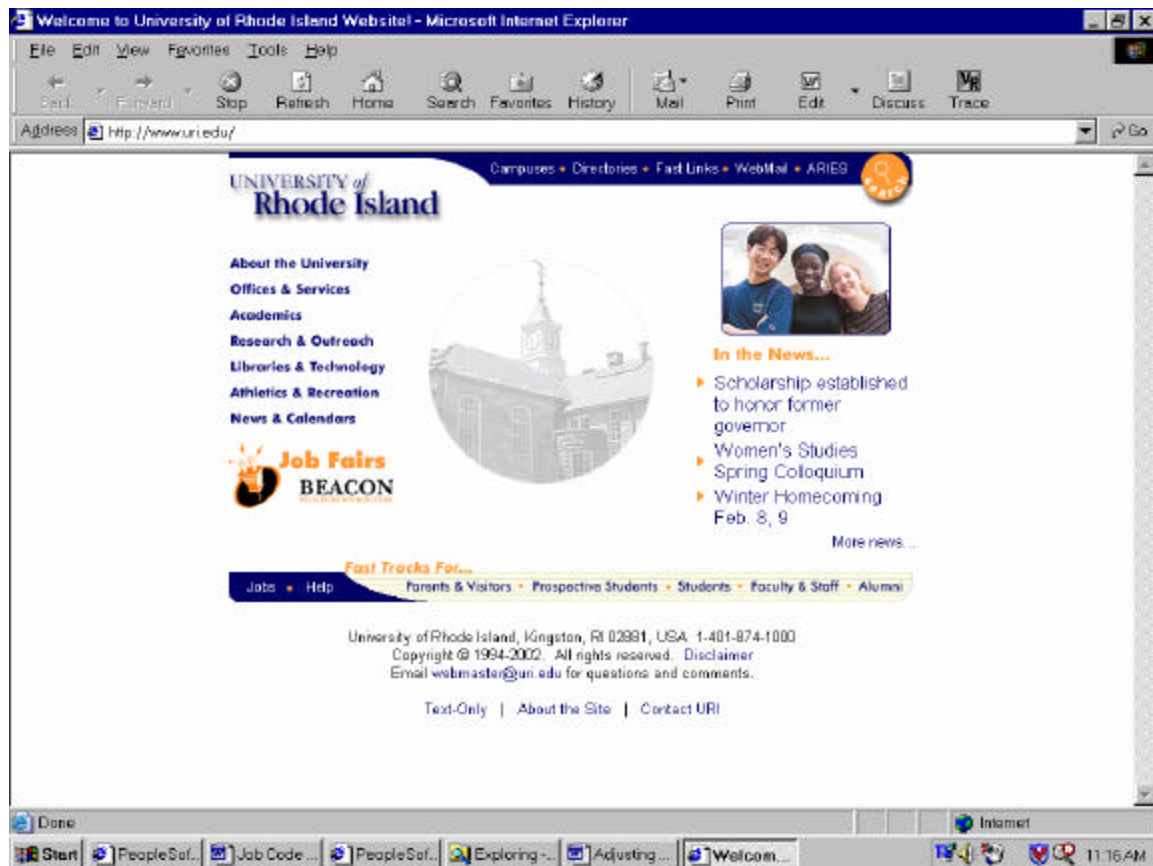


1600 by 1200

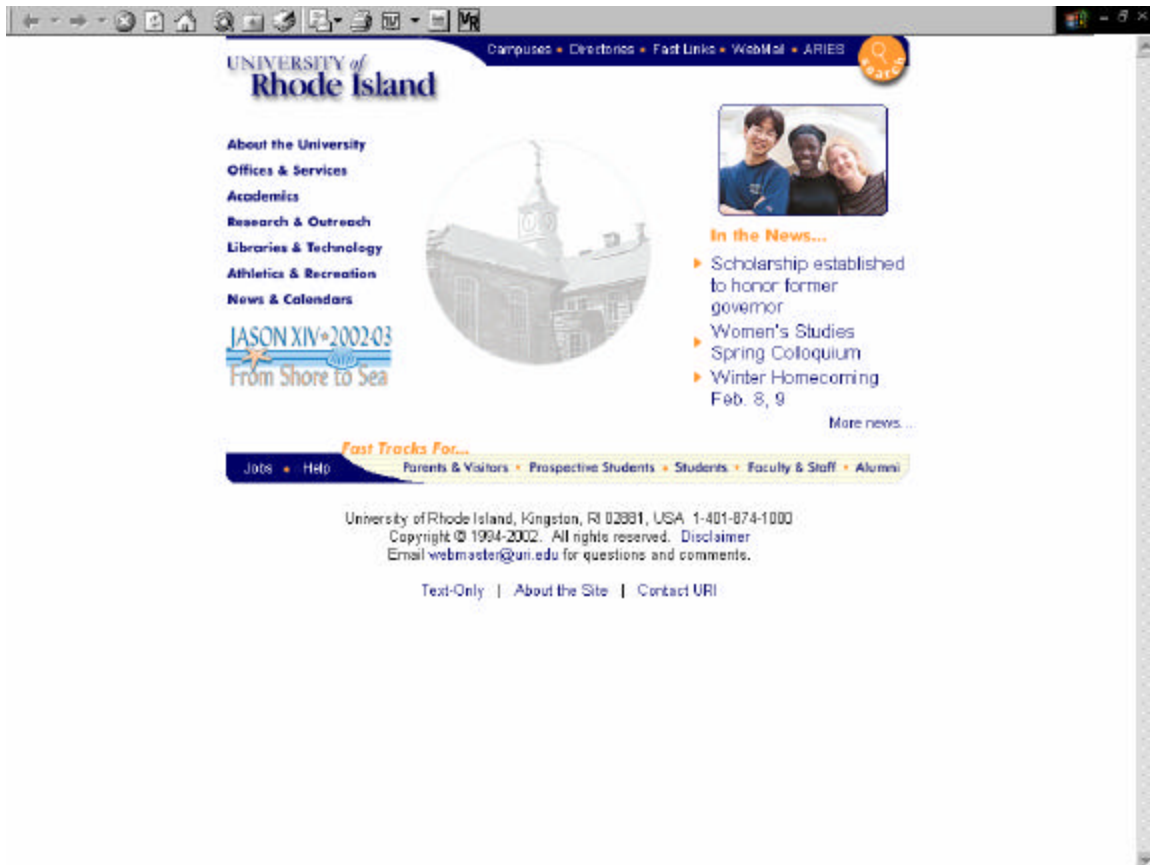


## F11

On many machines, simply hitting the F11 button will reduce the clutter on your screen by getting rid of the upper and lower toolbars.



After hitting F11, your screen will look like this:



When operating with the screen like this, in order to access any of the tabs that may be on the bottom of your screen, just drag the cursor over the area where they would normally be and they will appear.

