
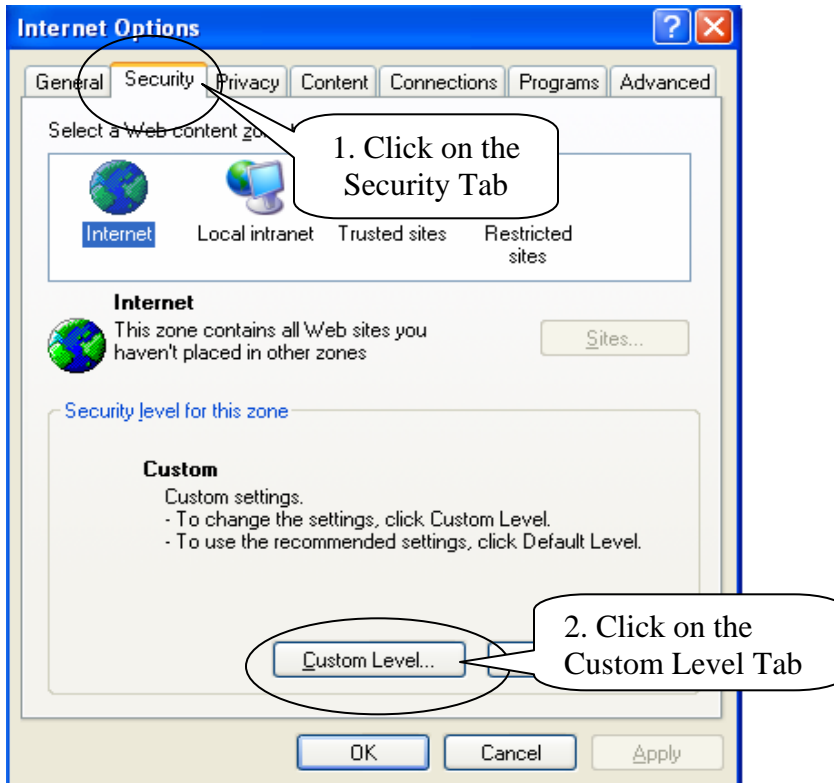


e-Campus Financials

Downloading to Excel Problems

If you experience problems with the download to Excel icon , change your Internet Explorer security (located in the menu bar at the top of the browser screen) as follows:

Navigation: Tools, Internet Options, Security. Then click the **Custom Level...** button.



Click the enable radio button under **Downloads, Automatic prompting for file downloads** and click **OK**.

e-Campus Financials



You may have to close out your browser session and re-open the browser and try again. You may call the PS Financial Lab at 874-7048 if you have any questions.