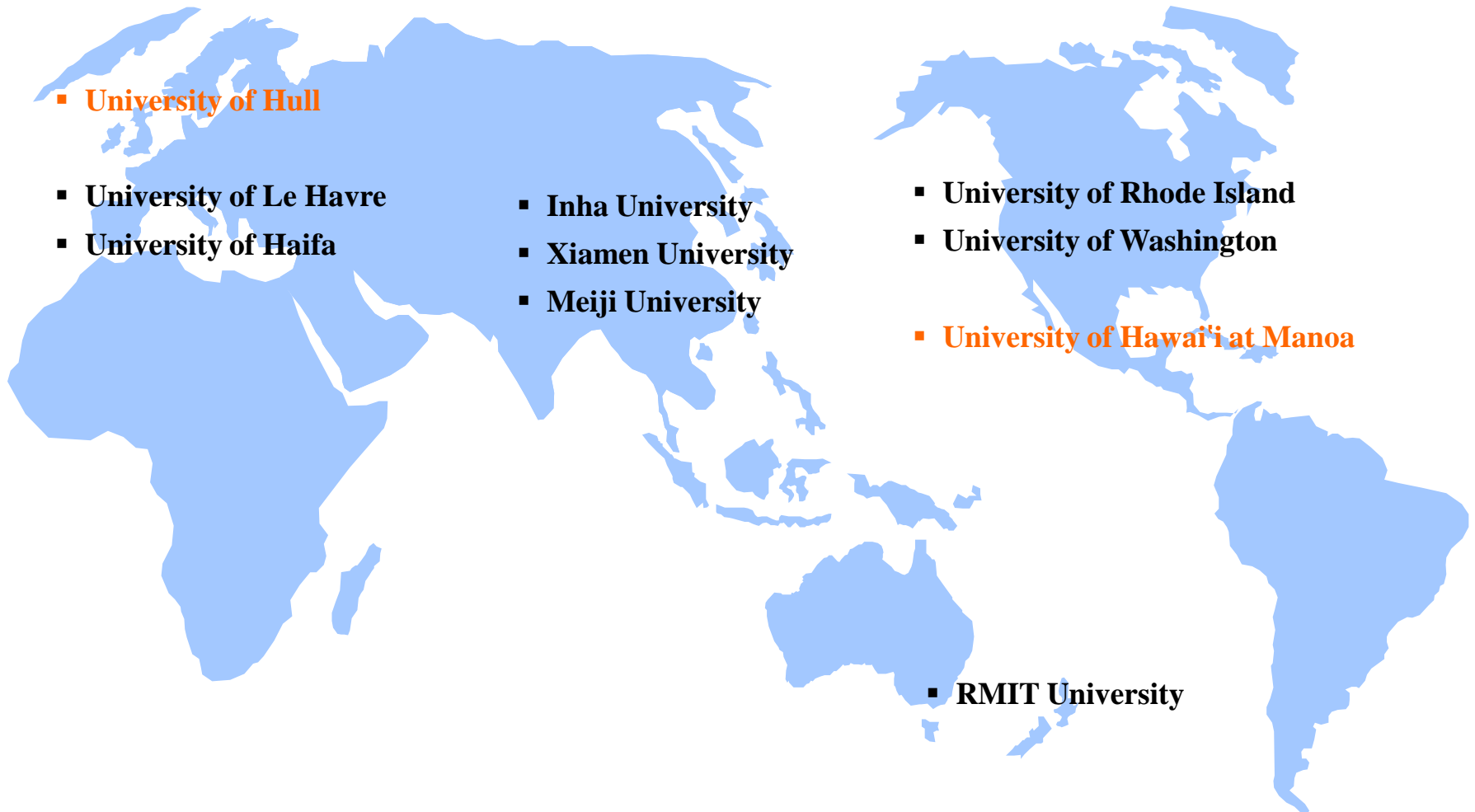


Members of the Global U8 Consortium



▪ **University of Hull**

▪ **University of Le Havre**

▪ **University of Haifa**

▪ **Inha University**

▪ **Xiamen University**

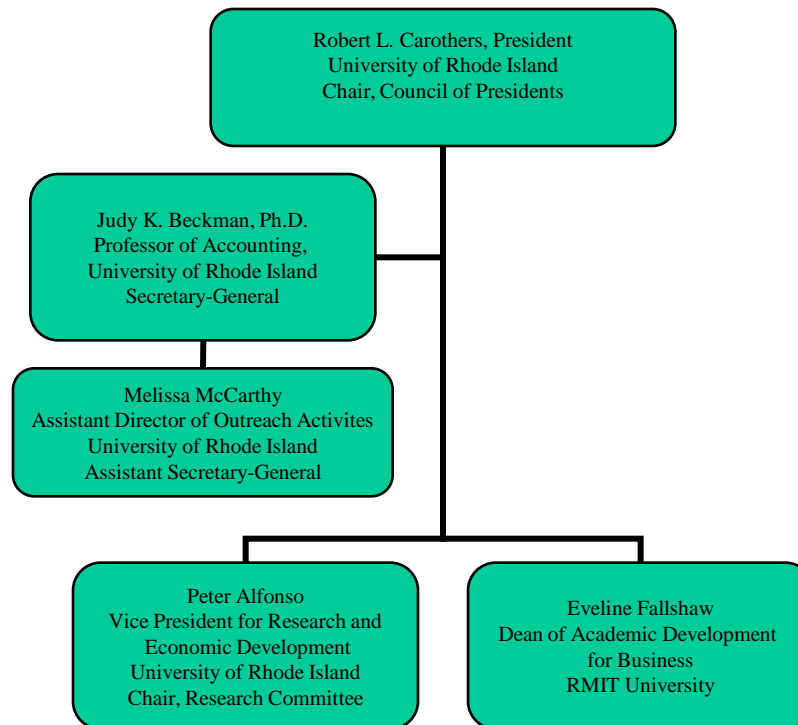
▪ **Meiji University**

▪ **University of Rhode Island**

▪ **University of Washington**

▪ **University of Hawai'i at Manoa**

▪ **RMIT University**



GU8 Structure

Le Havre Declaration in 4th COP June, 2007

- Approval of two new members: University of Hawaii, University of Hull → GU8
- URI President Carothers became Chair of the Council of Presidents.
- The COP merged the Building Administrative Capacity Committee (BACC) into the EC.

GU8 Consortium

Areas of Expertise

Marine Affairs and Ocean Sciences

- Major area of focus under Research Chair
- Hub at URI

Global Logistics

- Hub at Inha University
- Master of Global Logistics Management

Business

- Global MBA and Leadership Program



GU8 Activities by Committee

Haifa Resoluton for the 3rd JRC, 3rd BACC, and 2nd Library Workshop, April, 2007

- Library Committee will evaluate
 - Terms with vendors and other consortia
 - Assessment of faculty information needs in GU8 fields of interest that cannot be fulfilled by local library or consortia, but might be met by consortial acquisition
 - Possibility open access publication system by the GU8
- Members signed an interlibrary loan agreement
- Members are interested in an exchange program
- The Library Committee will report at the next EC meeting due to the merger of BACC into EC

Global MBA and Leadership Program

Inha University, Korea

Le Havre University, France

University of Rhode Island, USA

Xiamen University, China

Global MBA and Leadership Program

Lecture and Case Work

- University of Rhode Island, June 21 to July 4:
 - Advanced Topics in Logistics
 - Professor Doug Hales
- University of Le Havre, France, July 5-19:
 - Marketing and French Retailing
 - Professor Nathalie Auborg
- Xiamen University, China, July 20-August 2:
 - Business Communications
 - Professor Yi Feng Shen
- Inha University, August 4-18:
 - Leadership, Creativity, and Management
 - Professor Uichol Kim

Global MBA and Leadership Program

Site Visits

- URI: Ocean Spray, Hasbro, CVS/Pharmacy
- Le Havre: Total (oil and gas), Carrefour (large retail distribution), Remy-Cointreau (liqueurs and spirits)
- Xiamen: Dell China or Lenovo Group, Anta (sports gear manufacturing), possibly mining
- Inha: Samsung Electronics, Korean Airlines, Yuhan-Kimberly, GM-Daewoo

Global Logistics Management Program

- Program structured similarly to the Global MBA and Leadership Program, with less intensity
- Participating Universities:
 - Inha University
 - RMIT University
 - University of Hull
 - University of Le Havre

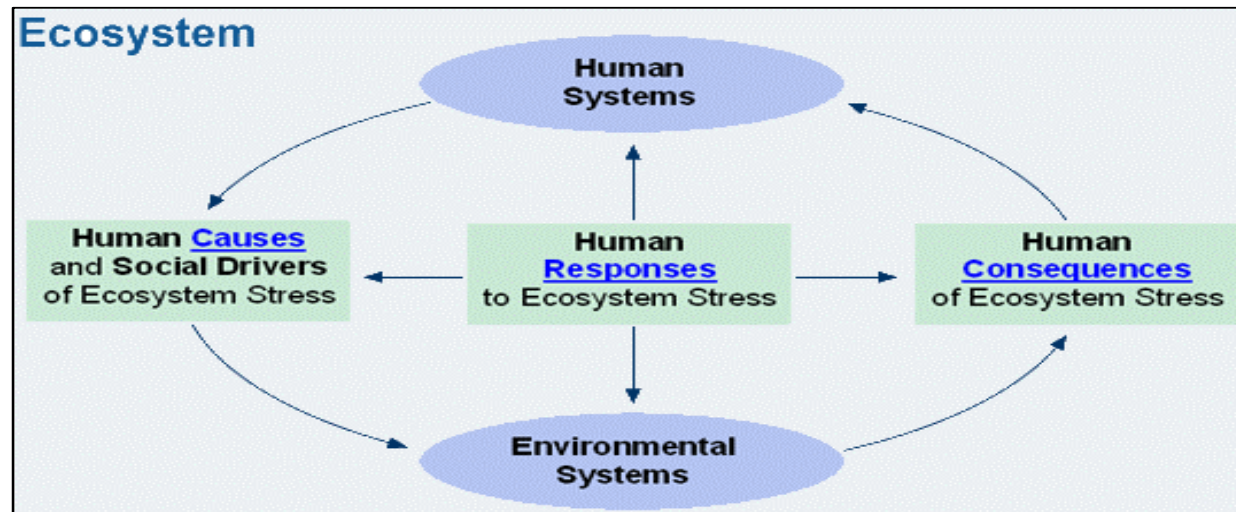
Marine Affairs Workshop

April 30 to May 2, 2008

University of Rhode Island



- Educational and research dimensions
- Tom Leschine, University of Washington, and Rick Burroughs, University of Rhode Island



Source: <http://www.nccos.noaa.gov/human/welcome.html>

Marine Affairs Workshop April 30 to May 2, 2008, University of Rhode Island



Anticipated Outcomes:

- Assistance with agenda framing for the GU8 Research and Education Committees
- Business, Education, and Research Opportunities in the Marine Sciences, from the local to the global perspective
- Contribution to the GU8 COP meeting expected to be hosted by a GU8 Consortium member in June or September 2009