



## ***NSE Handbook***

### **The University**

The University of Rhode Island (URI) is located in Kingston, which is thirty miles (18.5 km) south of the state's capital and largest city, Providence. URI was founded in 1892 and has been expanding ever since. The center of campus is a quadrangle of old granite buildings surrounded by newer academic buildings, student residence halls, and fraternity and sorority houses. On the plain below Kingston Hill are gymnasiums, athletic fields, tennis courts, and agricultural fields.

Approximately 14,500 students are enrolled at URI. There are two villages and one town that make up the area close to the Kingston campus. They are Peace Dale, Wakefield, and Narragansett.

### **Rhode Island**

The state of Rhode Island and Providence Plantations is the smallest state in the United States. Even though the state may be small, it does possess over 400 miles of coastline so it is often referred to as the "Ocean State". Three hours north of New York City and just over one hour south of Boston, the state is ideally situated for easy access to all a major metropolitan area has to offer.

The weather in Rhode Island is generally sunny and warm from April to October and often cool and gray from November to the end of March. The temperature in the autumn months averages 50 degrees Fahrenheit (10 Celsius). In winter it ranges between 30 and 40 degrees Fahrenheit (-1 to 4 Celsius), but at times is much colder with occasional snow. The spring months usually bring rain and temperatures in the 60's Fahrenheit (15 Celsius) and the summer months are hot with the temperature ranging between 75 and 90 degrees Fahrenheit (24 to 32 Celsius). The one thing that is predictable about Rhode Island weather is that it is unpredictable, so be prepared.

For more information on URI, Rhode Island, and area attractions visit:

**<http://www.uri.edu/home/visitors/index.html>**

Or:

The Rhode Island Tourism Division's website at:

**<http://www.VisitRhodeIsland.com>**



### **OIE/NSE**

The Office of International Education & National Student Exchange (OIE/NSE) acts as the liaison between your home institution and URI. The office deals with your paperwork, produces this handbook, and is responsible for your campus orientation. The office will assist you with course registration, campus housing, student I.D.'s, etc. The Office of International Education and National Student Exchange is open 9am-4pm Monday – Friday and is located in Room 107 of Taft Hall (next to the University Library). The telephone number is (401) 874-5546.

## **Maintaining Contact with Our Office**

Prior to your arrival to URI it is important that you notify us if your mailing address/contact information changes so we can make sure you receive all future materials we may send you. If you change your contact information, please notify our office as soon as possible by sending an e-mail to [oi@etal.uri.edu](mailto:oi@etal.uri.edu) or by faxing us at 401-874-4573.

## **Transcripts**

All official transcripts, including spring 2005 grades, should be sent from your Registrar directly to our office as soon as possible. We will need these to confirm your eligibility for studying at our campus via the NSE program and to assist you with course registration, when necessary.

## **Course Registration & E-Campus**

E-Campus is the electronic system you will use to navigate through administrative matters here at URI. It will give you access to all enrollment services, including course registration, financial aid, transcript request forms and billing. To begin, click on the “e-Campus” hot button on the URI main web page. If it is your first time entering the system, then click on “New Users Register Here.” If you are already a registered user, click on “Student” and begin exploring. Be sure to remember (preferably write down) your user name, password and system-assigned student identification number, as you will need all of this information for future inquiries.

The comprehensive schedule of courses for next semester is available online on the e-Campus system. To view the available courses and to register, log on to the e-Campus system, click on students, then on “Learner Services.” Then, click on “catalog” to view the available courses, and “academics” to register.

As is probably the case on your own campus, the first few weeks of the semester is a transition period. Once you arrive here, you will have an opportunity to add or drop courses. You will also learn about our override process and how to request permission of professors to seek enrollment in otherwise unavailable courses. Please understand that although there are no guarantees for getting into 100% of your desired course choices, we here at URI have an excellent track record for accommodating our visiting exchange students.

## **On-Campus Housing**

Housing and Residential Life information and applications can be reviewed and downloaded at <http://www.housing.uri.edu/> If you decide to live on campus, the housing request form, along with a \$250 deposit, must be returned to URI as soon as possible. We recommend getting this done early, as requests for specific dormitory or housing styles are handled on a first-come, first-served basis. Single occupancy accommodations on campus are very limited. (Housing deposits checks should be made payable to the “University of Rhode Island”).

You will be able to move into your dormitory starting at 6:00 am on Sunday, September 4th.

If you request on-campus housing, you will be provided with a room in a residence hall when you arrive on campus. There are 19 residence halls located on the lower (west) end of campus, just a short walking distance from the dining halls. Two students share most rooms. You may wish to bring posters or pictures from home to decorate the walls of your room. In most rooms there is no running water. The bathrooms and showers on your floor are communal. Phone, internet and cable television service is available in each room and arrangements for hook-up can be made upon your arrival.



Cooking on a burner or flame is not allowed in your room; however, you may have a small microwave oven and a refrigerator in your room. There are common areas in each residence hall where you may use cooking facilities. For the most part, you will be eating your meals in one of the four dining halls on campus or at one of the eateries close to campus. Students have the option to rent refrigerators to have in their dorm rooms if they do not have their own. Residential Life will send you information about rentals before the beginning of the semester.

The majority of students living in the dorms at URI are first or second year students.

**PLEASE NOTE: The residence halls are closed during Thanksgiving recess, Christmas recess and Spring Break. Therefore, you will need to make alternative housing arrangements during these three vacation periods.**

### **Off Campus Housing**

For assistance with off-campus housing, visit the Off-Campus Housing WWW site at [http://www.uri.edu/commuter\\_housing/offcampus.html](http://www.uri.edu/commuter_housing/offcampus.html)

If you choose to take advantage of this option, you should plan accordingly to ensure arrangements have been made before the start of classes. Many students will arrive a week or so early to make the appropriate housing arrangements.



### **Meal Plans**

Dining arrangements can be made on-line by going to <http://www.uri.edu/dining/cao.htm>

Anyone may purchase a dining plan, however, if you choose to live on-campus, you are **required to purchase a meal plan**. Many students prefer the “any 15” meal plan because it provides the flexibility to skip some meals along with the security of knowing that the majority of your meals are paid for.

## **Plan A –Financial Aid**

If you are a “Plan A” student and applying for financial aid from URI, your **must** make sure that your FAFSA information is released to URI. The URI financial aid release code is 003414. The Financial Aid Office is part of Enrollment Services, located in Green Hall. If you have any questions regarding financial aid, please contact the Financial Aid Office. Phone: (401-874-2314), e-mail: [finaid@etal.uri.edu](mailto:finaid@etal.uri.edu), or visit their web site: <http://www.uri.edu/es/students/>

## **Plan A - Tuition and Fees**

Plan A students will pay in-state tuition and fees to the University of Rhode Island. Currently, for spring 2005, this totals \$4,680. 2004-2005 fees will be announced in July, and tuition bills will be sent directly to you around that time. Students that enroll for more than 18 credits will be billed additional credit fees.

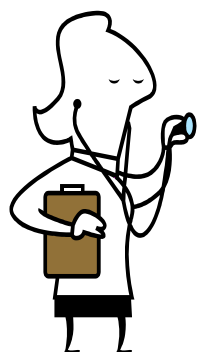
## **Plan B – Tuition and Fees**

Plan B students will pay their tuition and fees at their home institution. If you are a Plan B student and will be applying for financial aid, you should do so at your home campus. You should not apply to URI for financial aid.

## **Transcript Fee**

All NSE students will be billed a one-time \$30 transcript fee. This fee enables you to receive unlimited transcripts for life from the University of Rhode Island without ever having to pay any additional fees in the future.

## **Health Insurance Fee**



All students will be billed for URI’s health insurance plan (currently \$1134 per year). This fee may be waived if you provide documentation that you are enrolled in a comparable health insurance plan. A plan is only considered comparable if it provides a minimum of \$50,000 coverage. Materials and more information on waiving URI health insurance will be sent to you later in the summer. In the meantime, if you have questions about this process, please call (401) 874-4755.

## **Health Services**

Health Services is like your local doctor, hospital, and pharmacy in one building. It is open 24 hours for emergencies and appointments may be scheduled during the day. A physician will examine you and attend to your needs or refer you to another doctor if special attention is required. They may also prescribe medicine that can be picked up at the pharmacy in the same building. They will also refer you to a local specialist or hospital as needed.

All students enrolled at URI are required to have adequate insurance coverage. You may choose the URI student health insurance plan (currently \$1134 for the 2004-2005 academic year) or you may waive it by

completing and returning a waiver card indicating other coverage comparable to the URI insurance plan. A plan is only considered comparable if it provides a minimum of \$50,000 coverage. There is no dental service on campus and dental coverage is not included in the URI insurance program. Health Services is located in the Potter building on Lower College Road and the telephone number is (401) 874-2246.

If you need prescription drugs, check with your physician and/or pharmacist about carrying a supply with you. If that is not practical, be sure to carry a prescription that can be filled here. Be sure to check carefully so the pharmacist can provide you with the correct prescription. There is one large drug store (CVS) located in the Emporium. However, there is no pharmacist on the premises so only over the counter medication is available there. If you are dependent on eyeglasses, we recommend you carry a spare pair and bring your lens prescription with you. There is an optometrist located on campus.

### **Airport Pick-up, Arrival, and Orientation Program**

You should plan to arrive in Kingston on Sunday, September 4th, or Monday, September 5th. Dorms will open on Sunday, September 4th.

The Office of International Education/National Student Exchange will be open on Sunday, September 4th, and Monday, September 5th. All exchange students should visit our office upon arrival in order to pick-up your orientation packet, and have any questions answered.

**We will hold a mandatory orientation program for visiting exchange students on Tuesday, September 6<sup>th</sup> in the Malcolm X Reading Room of Taft Hall, just outside of the Office of International Education & National Student Exchange.**

Classes begin Wednesday, September 7<sup>th</sup>.

### **Employment**

Students searching for employment opportunities can check out the student Job Board at the following WWW site: <http://www.uri.edu/es/students/finance/employment.html>

This site lists on-campus, off-campus, and College Work Study program opportunities. In the fall semester the university hosts a Student Employment Fair. Look for fliers or check campus calendars for information about the fair when you arrive on campus.

### **Volunteering with the OIE/NSE**

NSE students that are interested in becoming involved with the OIE/NSE office are welcome to volunteer their time. We are always looking for visiting exchange students to help promote the NSE program.

Volunteers assist by talking to students in URI 101 classes (mandatory 1 credit orientation class for first year students), helping out at our Study Away Fair, or just talking to students that may be interested in studying at your school via the NSE program. This is a good way to meet other students and promote your university. If you are interested, talk with an OIE/NSE staff member for details.

## **Purchasing Textbooks**

Books can be purchased at the URI Bookstore (<http://www.uri.edu/bookstore/>) in the Memorial Union or the Rhode Island Book Company located in the Kingston Emporium, a retail shopping area that borders the URI campus.



## **URI Student I.D. Cards**

Once you arrive at URI, you should acquire your student I.D. card as soon as possible. You will need the URI I.D. card to access the various student services on campus such as the library, computer centers, dining services, etc. It will only take you a few minutes to acquire your I.D. card.

To obtain your I.D. card, you need to visit the ACCESS Office on the first floor of the Memorial Union. Bring an official photo I.D. and your student I.D. number with you.

## **Parking Passes**

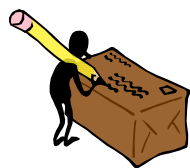
Students bringing a vehicle to campus must register with the information center and obtain a student parking permit. The information center is located on Upper College Rd. You can also register online at <http://www.uri.edu/parking>. Student parking passes cannot be obtained until you have received a URI student ID card. Until you receive your card, you should obtain a temporary parking pass from the campus visitors information center.

## **E-mail and Computing**

As a registered URI student, you are automatically assigned a network ID when you join the University. The network ID enables you to process e-mail, dial up to the Internet from home, access class or student information, create a personal WWW site, access special library services, make changes in the Campus Directory on-line, and take advantage of many other Internet services. All URI students may obtain an e-mail account. To do this, you must visit the following website: <http://www.uri.edu/ois/gen/email.html> Follow the instructions on this web page to activate your e-mail and learn how to use your e-mail account.

URI offers students access to an abundance of computer facilities and assistance. For information on the location of computing labs, computer help, computer lab hours, etc. visit the URI Office of Information Services website at: [http://www.uri.edu/home/lib\\_tech/](http://www.uri.edu/home/lib_tech/)

## **Mail**



If you will be living on-campus, you should visit the Union Express station in the Memorial Union to receive your mailing address. In the meantime, you may have your correspondence sent to us at the following address:

Your Name

C/o: Office of International Education & NSE  
107 Taft Hall, University of Rhode Island  
Kingston, RI 02881

After arrival at URI and once you are settled into your room, please remember to have all your mail sent to your new address. You should also keep your address updated in the URI Student Records System to ensure you get any university mail sent to you. You can do this from within the e-campus system.

### **Additional Academic Assistance**

There are tutors available to work with you if you are having difficulty in your classes. They can be contacted by visiting the Academic Enhancement Center (<http://www.uri.edu/aec/>) in Roosevelt Hall or by calling (401) 874-2367. If you are having difficulty with a writing assignment, you may obtain assistance from the Writing Center ([http://www.uri.edu/artsci/writing/Writing\\_Center\\_Pages/index.html](http://www.uri.edu/artsci/writing/Writing_Center_Pages/index.html)). The Writing Center is located in Independence Hall and may be reached by telephone at (401) 874-4690.

### **Counseling Services**

The URI Counseling Center (<http://www.uri.edu/coun/>) is open to all students and can assist you with any type of personal adjustment problem you may have. The Counseling Center is an excellent place to go if you need to talk to someone. All conversations are confidential and the Counseling Center's phone number is (401) 874-2288.

If you would like to talk to a chaplain, there are several on campus. Catholic, Jewish, Episcopalian, and other Protestant denominations are represented. These chaplains can be contacted by phone at 874-2324 for the Catholic chaplain, 874-2740 for the Jewish chaplain, 874-2739 for the Episcopal chaplain, and 874-4784 for the Protestant chaplain. There are also several temples and churches in the area. The chaplains affiliated with the churches above would be happy to help you find one that suits your needs if you wish to attend services.

The Campus Chaplains website is: [http://www.uri.edu/student\\_life/chaps/](http://www.uri.edu/student_life/chaps/)

### **Money & Banking**

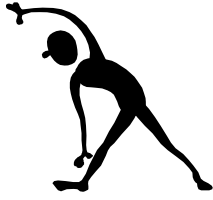
The Rhode Island Credit Union is the only bank on campus and is located in the Memorial Union. You will need \$5.00 to open a savings account and \$20.00 to open a checking account at the Credit Union. The costs to open accounts at other area banks may vary. At most banks you may obtain an ATM (Automated Teller Machine) card that can be used at bank machines throughout the United States. There are ATMs located in the Memorial Union and the Kingston Emporium, and there are several banks in Wakefield.



### **Shopping**

There are several shops within walking distance of the campus. These shops are located in an area known as the Kingston Emporium and include several restaurants, a convenience store, a drug store (only non-prescription medication available), a hair salon, a bookstore, coin operated laundry, and various other shops. Similar businesses and services are also located in the Memorial Union.

For more information, check out the following WWW site: <http://www.uri.edu/home/students/>



## **Exercise**

The Mackal Field House and Keaney Gymnasium are important facilities on campus, especially if you are interested in sports, athletics, or health-related activities. The field house has an indoor track for running and walking, basketball and volleyball courts, weight rooms, and a training room with the latest exercise equipment. The Keaney-Tootell athletic complex is equipped with basketball courts, three swimming pools, a handball court, and dance studio. There are also tennis courts and playing fields on campus. The newest additions to the Athletic complex are the Ryan Center ([www.theryancenter.com](http://www.theryancenter.com)), an 8,000-seat arena, and the Boss Ice Arena. The Complex is home to all types of sporting clubs and organizations. If you are interested in participating in some form of athletics, stop by the field house or call (401) 874-2029 for more information.



The Athletics Department website is:  
**<http://www.gorhody.com>**

## **Student Activities and Campus Events**

Aside from your academic work, you will find that there are many different events on campus each semester. Current films are shown weekly in Edwards Auditorium. Lectures sponsored by different campus organizations are scheduled several nights a week as well. These events are usually advertised a week or two in advance. The university has its own theater department that produces several plays during the year. In addition to its own production, the university offers performances by outside touring companies and performers. There are a variety of musical performances on campus each year too – from popular to classical. Tickets for plays are available through the theater box office located in the Fine Arts Building and the Student Union box office sells tickets for almost all other campus events. The Ryan Center is home to both the men and women's basketball teams as well as events that include, Dave Matthews Band, Monster Truck Rally, the Circus, No Doubt, and many others. See **[www.theryancenter.com](http://www.theryancenter.com)** for updated schedules of events.



URI has several athletic teams that compete against other universities. All events on campus are either free or discounted for students.

As mentioned above, a very important place on campus is the Memorial Union (student union). This building houses student government, student organizations and clubs, and a general information desk that provides public transportation schedules, newspapers, etc. It also houses a food court, the URI Bookstore, a bank, travel agency, hair salon, a florist, the campus radio station (90.3 WRIU), and the campus newspaper (The Good 5 Cent Cigar) office. The Memorial Union is a good place to go if you are interested in learning about the current events on campus and to meet people.

There are also a number of student organizations and intramural sports leagues. The Memorial Union and Mackal Field House are the primary places to visit to find out about campus organizations. Some of these groups also post meeting dates on the bulletin boards in the various academic buildings. Participating in campus organizations is a good way to become acquainted with other students that have similar interests.

The Student Life and Activities website ([http://www.uri.edu/student\\_life/](http://www.uri.edu/student_life/)) lists many of the student organizations' WWW home pages and is worth a visit.

## **Just for Students WWW Page**

URI maintains a WWW page geared completely towards its student body that you should definitely examine. The WWW site is: <http://www.uri.edu/home/students/>



### **Bus Service**

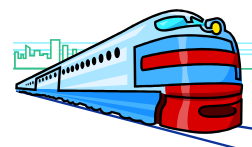
The URI campus is in a rural setting, approximately 40 minutes from Providence, the largest city in Rhode Island. Transportation to other areas of the state is accessible though the state-run bus service called RIPTA. RIPTA offers service between such locations as Showcase Cinemas, Providence, Newport, the airport, shopping malls, the train station, etc. Bus schedules for all these routes may be found at the Information Desk in the Memorial Union, by calling RIPTA at (401) 781-9400 or by visiting the RIPTA website at: <http://www.ripta.com/>

If you are interested in taking a bus to a location outside of the state, Greyhound bus lines provides the service throughout the U.S. For more information, their phone number is (401) 454-0790 and website is: <http://www.greyhound.com/> Bonanza bus lines operates a service to New York and Boston. They may be contacted by phone at (401) 751-8800 or by the WWW at: <http://www.bonanzabus.com/>

URI now offers on-campus transportation on the RIPTA Kingston Connection. This service operates from 8am-5pm with pickups every 5-8 minutes. Visit their website to see the schedule and route map: <http://www.uri.edu/parking/kingcon.html>

### **Train Service**

An alternative to the bus is the train (Amtrak). Kingston Station (<http://www.trainweb.org/kin>) is 3 miles (4.8 km) from campus and has service to Providence and all major East Coast cities. A train schedule can be obtained at the station or by calling 1-800-872-7245. Amtrak's website is: <http://www.amtrak.com/>



### **Air Service**

For flight arrangements, you can either make arrangements through a travel agent or dial an airline directly. There is a travel agent in the Memorial Union (see below). T.F. Green is the closest airport to URI. If your wish to rent a car, there are several car rental companies located near the T.F. Green airport outside of Providence. If you wish to rent a vehicle, it is necessary to acquire a driver's license and have a major credit card.

### **Travel and Recreation**

The Kingston area is an excellent base for travel along the East Coast. Rhode Island has some local attractions that are worth visiting as well. Southern Rhode Island is known for its beaches, which are only 6 miles (9.6 km) from campus. The closest ones are the Narragansett Town Beach and Scarborough Beach. Both are accessible by bus from URI. Entrance to the beaches is free during the spring and fall but there is an entry fee during the summer months.

There are many places to visit only a short bus ride from campus. Newport is a well-known resort town. It is one of the oldest port cities in the U.S. and is the site of many international sailing events. Most of Newport's shopping and restaurant district can be seen on foot. The town is filled with many small shops and a variety of restaurants. Some of Newport's greatest attractions are its mansions. In the late 19<sup>th</sup> and early 20<sup>th</sup> centuries, it was the premier resort town for many of the wealthiest industrialist in the United States. Although mansions, the estates were referred to as "summer cottages". Many of the mansions are still private residences but there are several that are open to the public. If you are interested in touring the mansions or visiting Newport's many attractions, contact the Newport County Convention and Visitor's Bureau at 1-800-976-5122 or visit their website at: <http://www.GoNewport.com>

If you are interested in shopping, there are two large malls located in Warwick and one in Providence. Warwick is a 30-40 minute bus ride from campus. In addition to the two malls, Warwick has many large department stores, outlets, and restaurants. To learn more about Warwick, visit their website at: <http://www.warwickri.com>

Providence, the largest city in Rhode Island, is a 50 minute bus ride from campus. Providence offers several cultural advantages over the South County area. The city has an excellent Performing Arts Center (PPAC) and a famous repertory theater company, the Trinity Rep. PPAC and Trinity schedule different plays and musicals during the year and the PPAC offers concerts and other types of performances. Both theaters offer special discounted rates to students. The city also has a convention center and a Civic Center that acts as a sports arena and concert hall for large events. The new Providence Place Mall is a very attractive place to shop and dine, visit their store listings at: [www.providenceplace.com](http://www.providenceplace.com)

Thayer and Wickenden Streets on the eastside of Providence have many cafes, interesting shops, an international and alternative theater (The Avon), and international restaurants. These streets are located near the Brown University campus. The Rhode Island School of Design museum (also located on the eastside) is also a worthwhile visit.

The easiest way to find out about upcoming events is to read the Providence Journal Bulletin (On-line edition at <http://www.projo.com>). Another newspaper called the Providence Phoenix (On-line edition at <http://www.providencephoenix.com>) has concert and club listings. The Phoenix is free a weekly publication that is distributed on Thursdays and is available in the Memorial Union. For more information on Providence, visit the Providence Convention and Visitors Bureau website at: <http://www.providencecvb.com/>

In addition to being a good base for local travel, URI is an excellent starting point for regional and national exploration as well. The campus is less than a two-hour drive from Boston and only three- four hours from New York City. Philadelphia and Washington D.C. are also within a day's travel away.

**\*\*NOTE: Please be aware that dates and times are subject to change. If you have any questions please email the office or call us at 401-874-5546.**