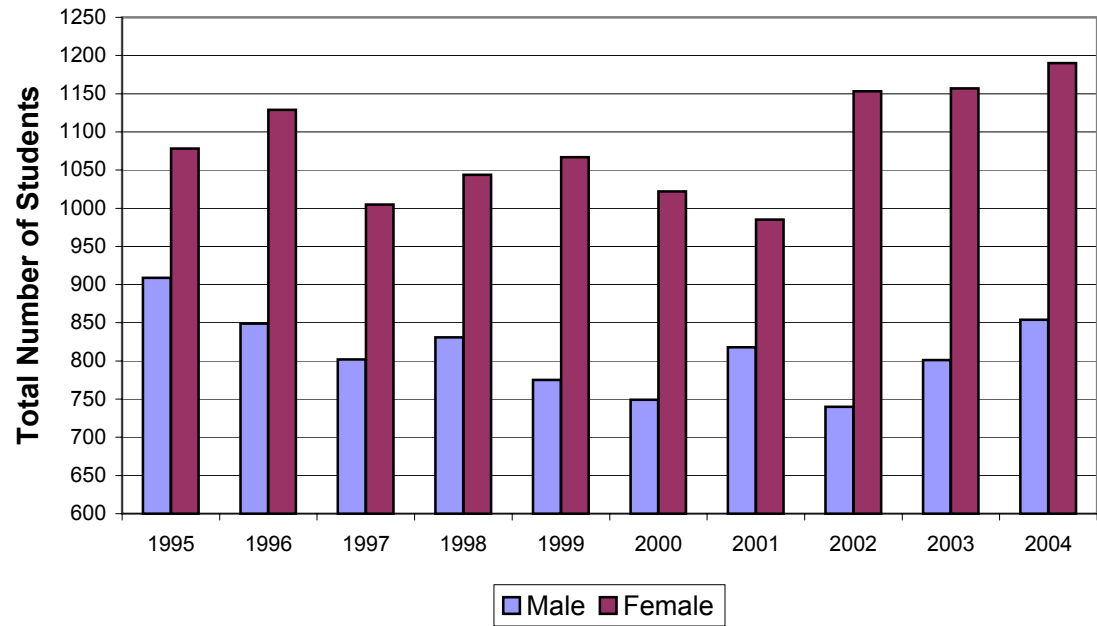


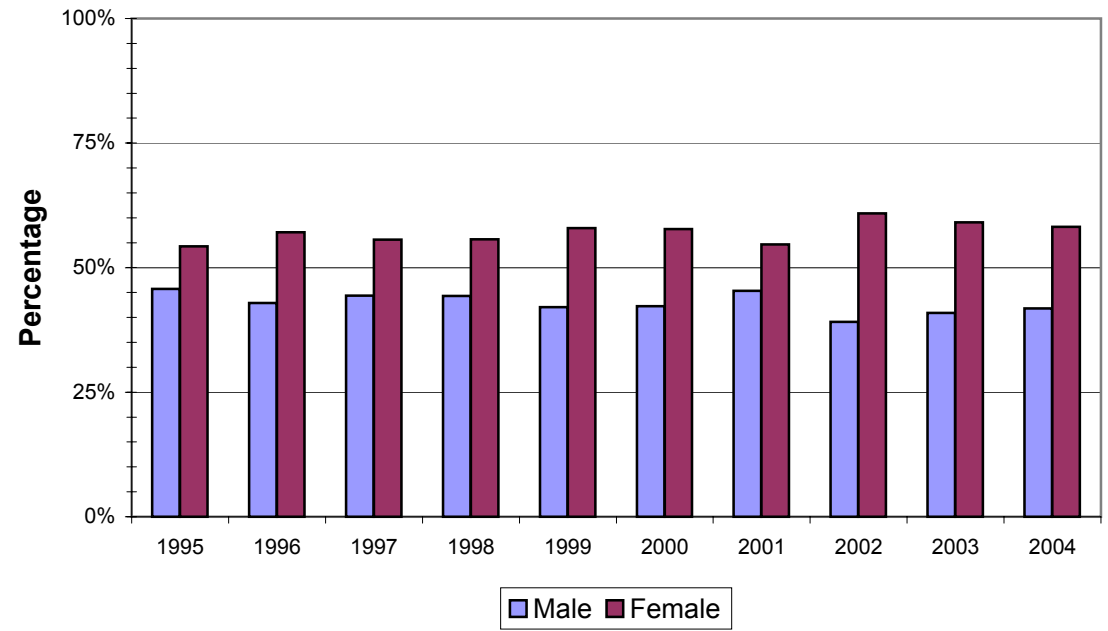
**University of Rhode Island  
DEGREES CONFERRED by Gender  
Academic Years 1995-2004**

Degree	1995		1996		1997		1998		1999		2000		2001		2002		2003		2004	
	M	F	M	F	M	F	M	F	M	F	M	F	M	F	M	F	M	F	M	F
<b>Baccalaureate</b>	909	1078	849	1129	802	1005	831	1044	775	1067	749	1022	818	985	740	1153	801	1157	854	1190
<b>Masters</b>	252	284	208	281	231	294	207	286	193	303	202	289	210	281	243	322	194	291	206	301
<b>First Professional</b>	1	3	1	6	8	8	6	12	10	17	17	47	30	43	24	54	17	38	31	47
<b>Doctoral</b>	58	47	43	38	54	32	37	35	47	36	49	35	48	47	39	38	44	33	38	41
<b>Grand Total</b>	1220	1412	1101	1454	1095	1339	1081	1377	1025	1423	1017	1393	1106	1356	1046	1567	1056	1519	1129	1579
<b>Totals Per Year</b>	2632		2555		2434		2458		2448		2410		2462		2613		2575		2708	

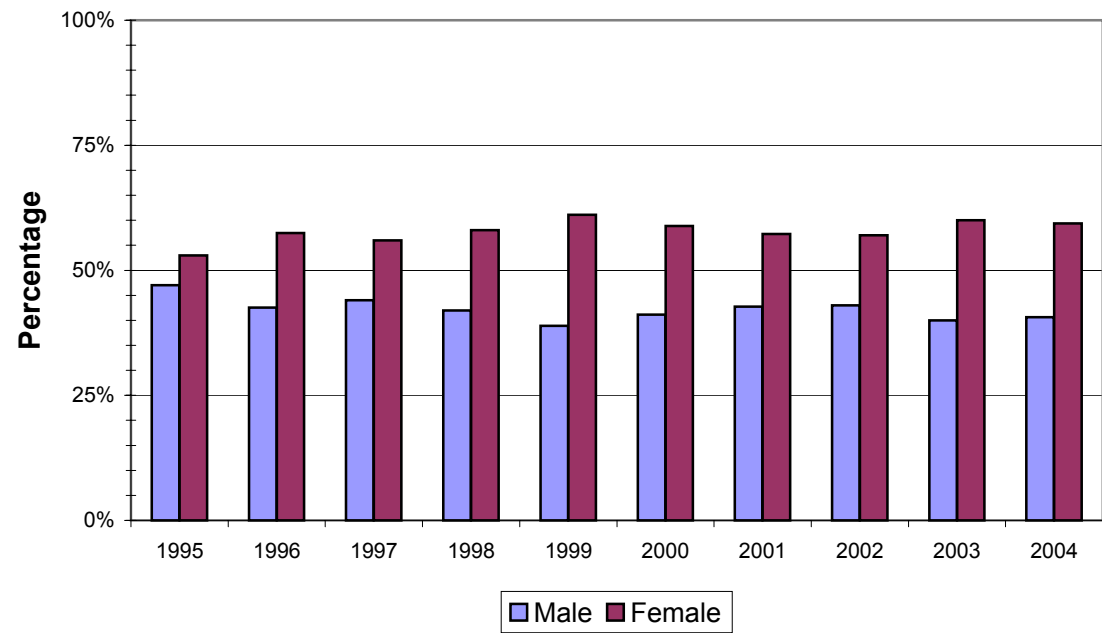
### Baccalaureate Degrees Conferred by Gender



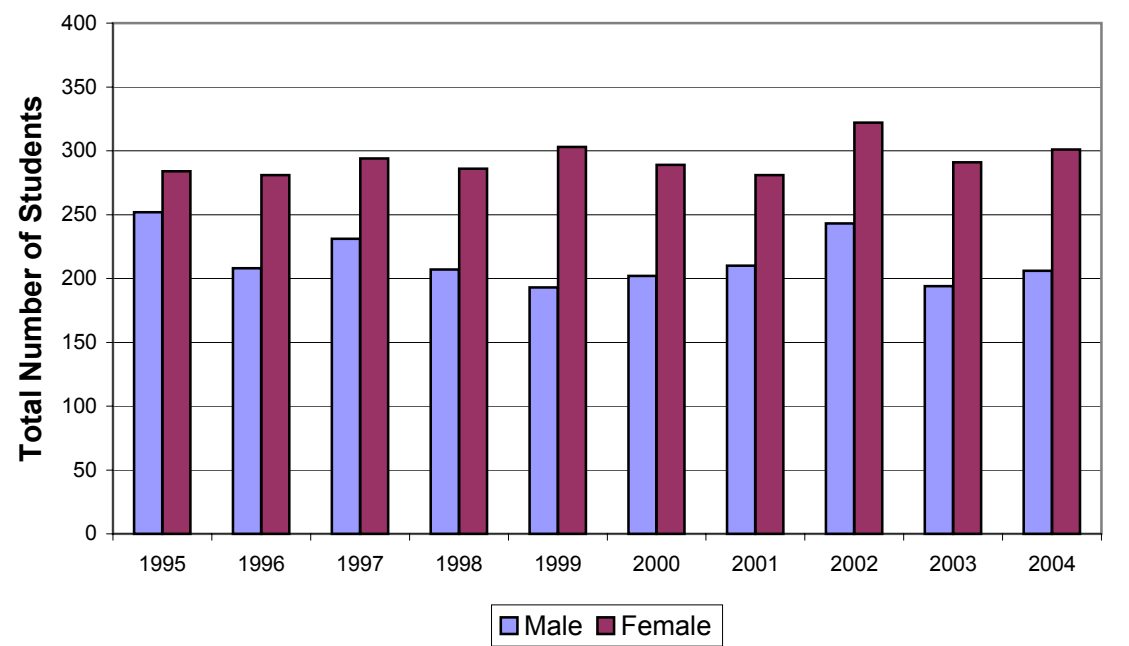
### Baccalaureate Degrees Conferred by Gender



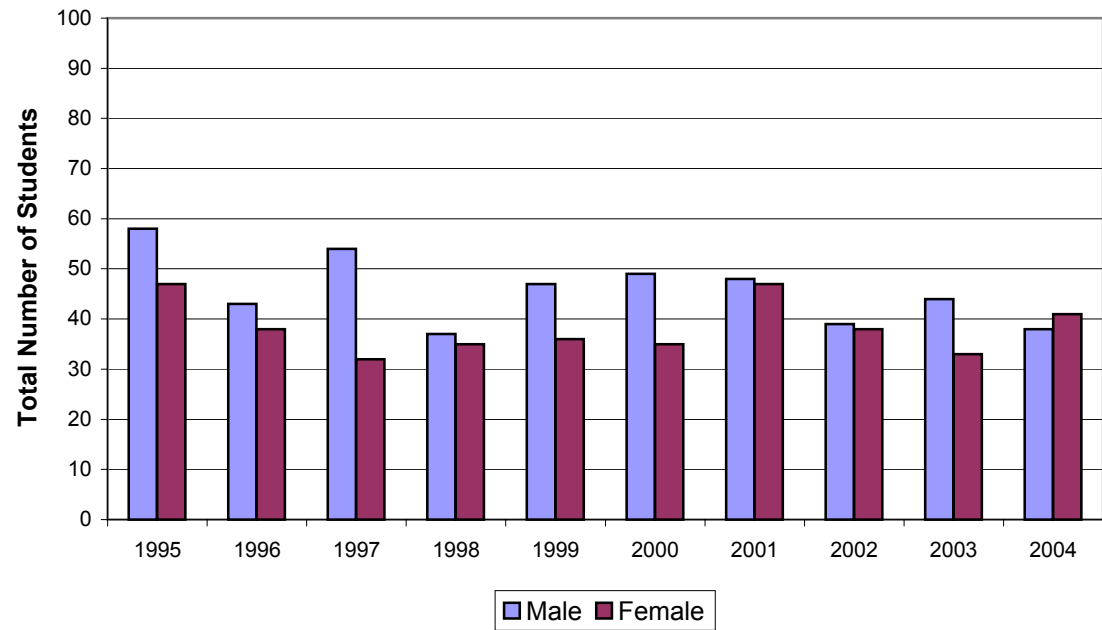
### Masters Degrees Conferred by Gender



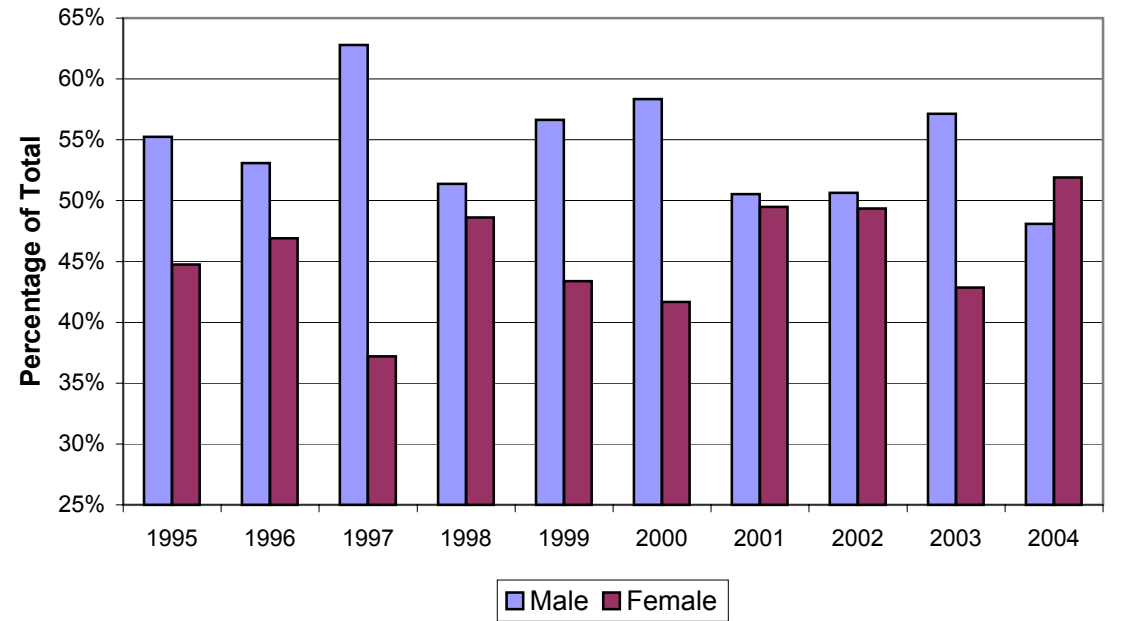
### Master Degrees Conferred by Gender



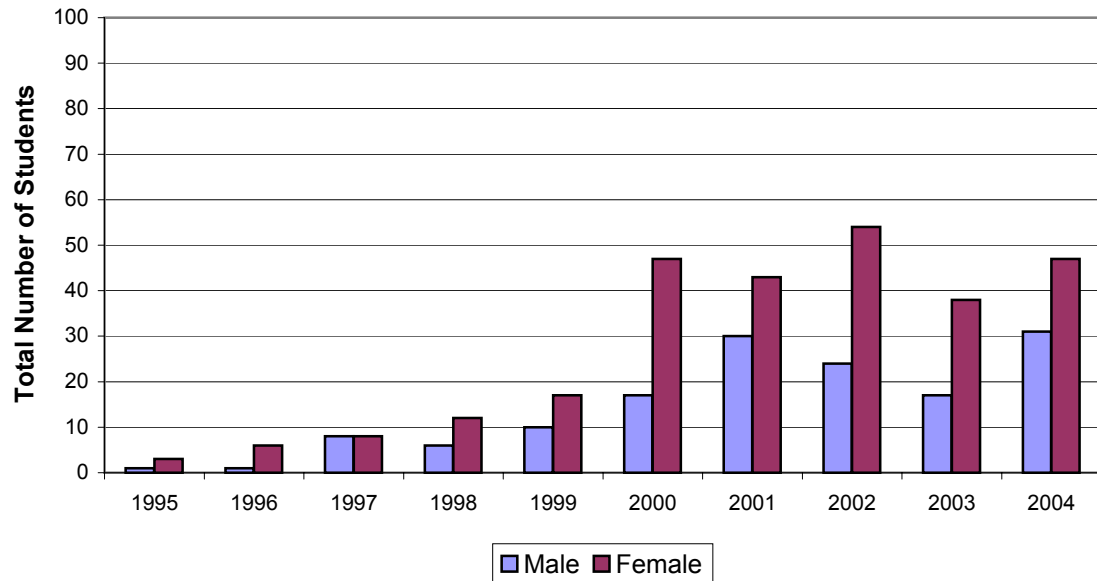
### Doctorate Degrees Conferred by Gender



### Doctorate Degree Conferred by Gender



### First Professional (Pharmacy PMD) Degrees Conferred by Gender



### First Professional (Pharmacy PMD) Degree Conferred by Gender

