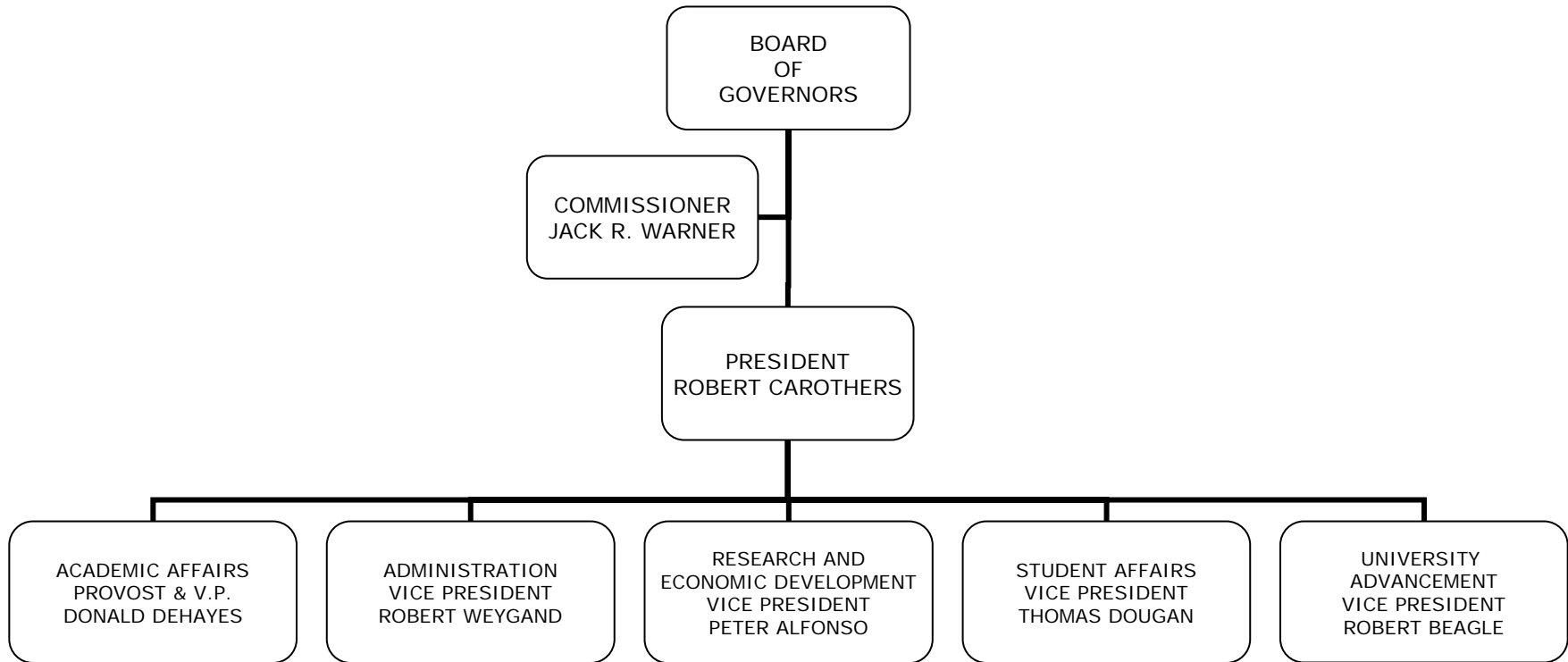




The University of Rhode Island



FY09 Allocation – Organizational Chart

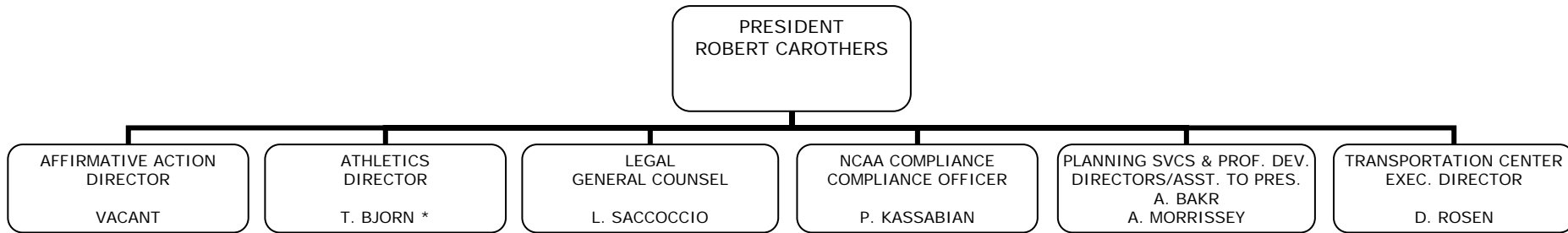




The University of Rhode Island



President's Office

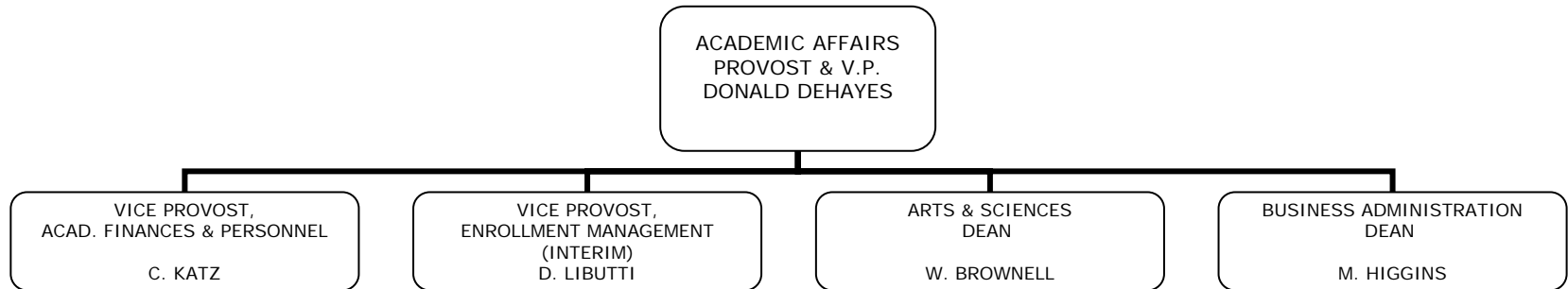




The University of Rhode Island



Academic Affairs

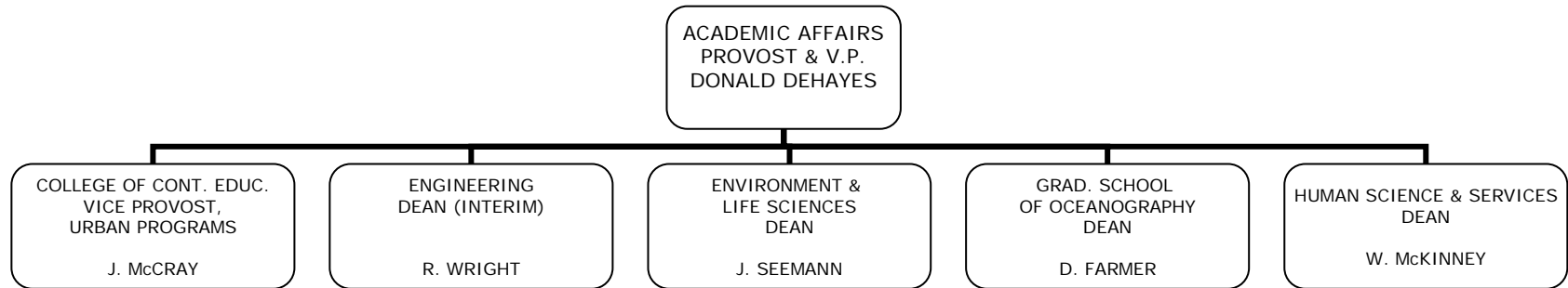




The University of Rhode Island



Academic Affairs (continued)

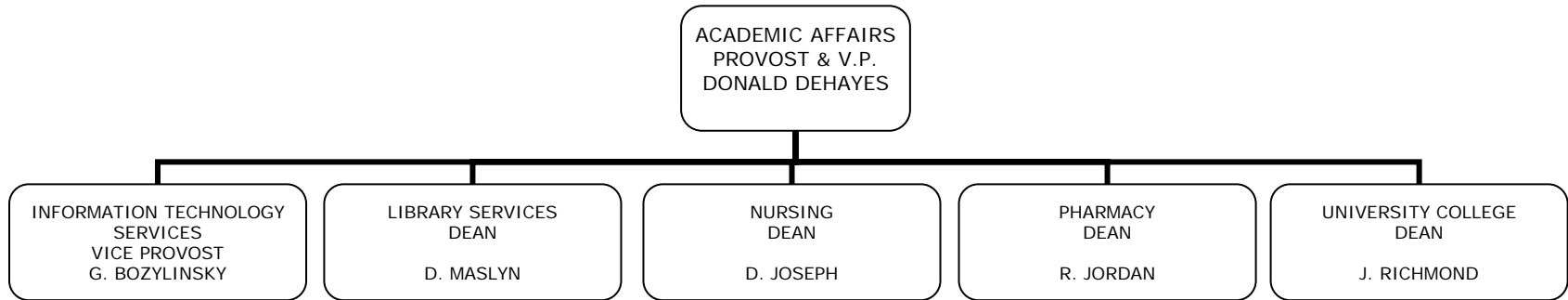




The University of Rhode Island



Academic Affairs (continued)

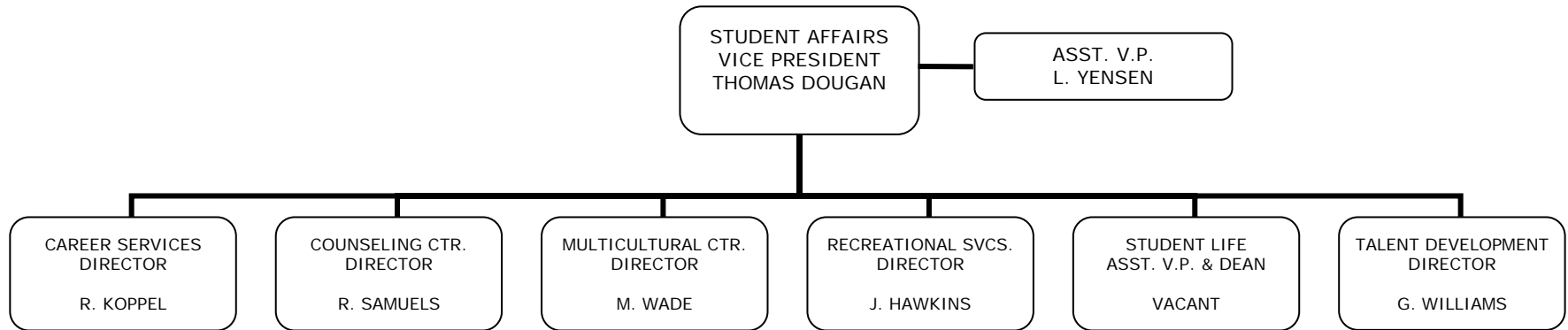




The University of Rhode Island



Student Affairs





The University of Rhode Island



Student Affairs (continued)

STUDENT AFFAIRS
VICE PRESIDENT
THOMAS DOUGAN

BOOKSTORE
AUXILIARY
ADMINISTRATOR
P. WHITNEY

DINING SERVICES
AUXILIARY
ADMINISTRATOR
K. GIANQUITTI

HEALTH SERVICES
AUXILIARY
DIRECTOR
C. HENDERSON

HOUSING & RESIDENTIAL LIFE
AUXILIARY
ASSOCIATE DIRECTOR
J. PLOUFFE

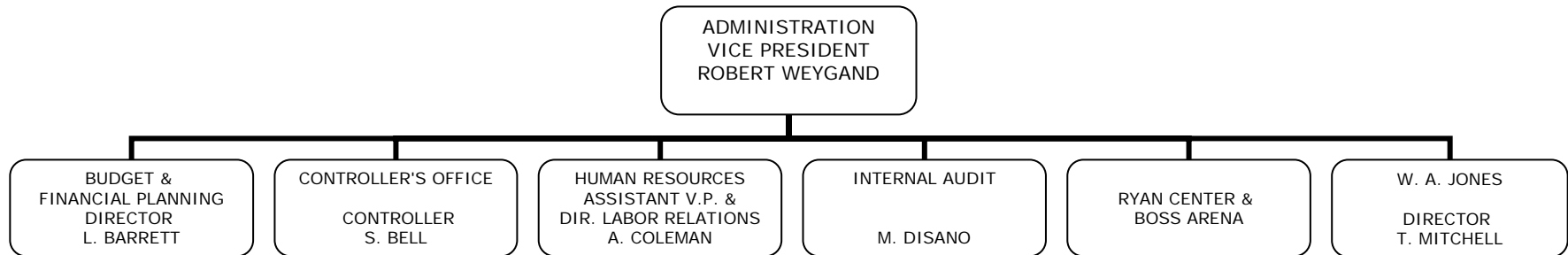
MEMORIAL UNION
AUXILIARY
DIRECTOR
B. HAMILTON



The University of Rhode Island



Administration

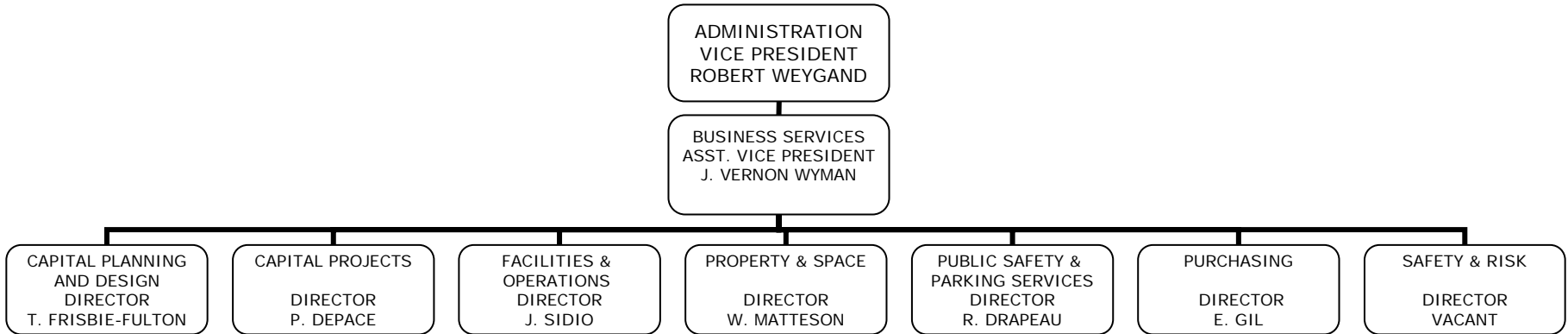




The University of Rhode Island



Administration (continued)

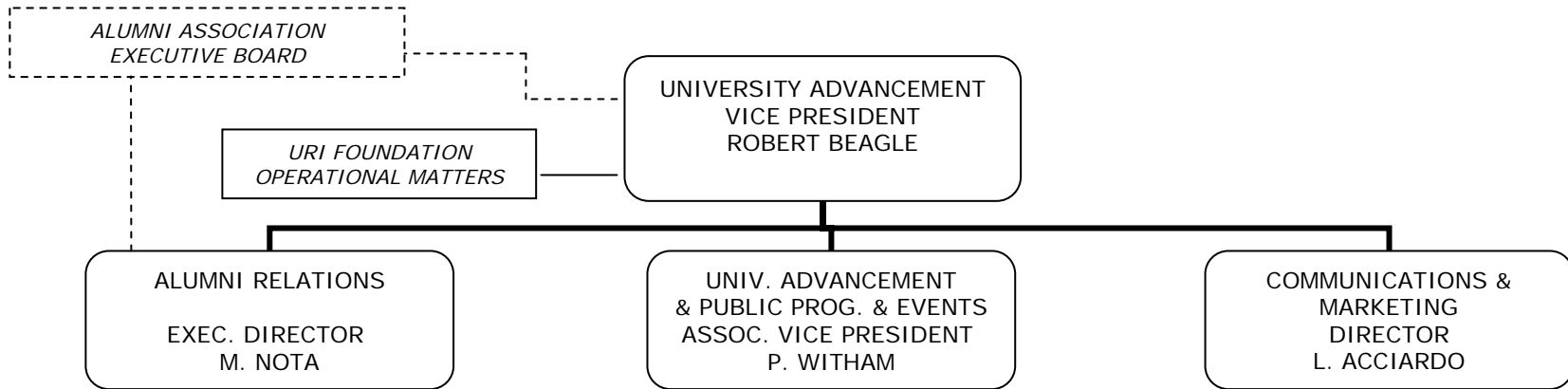




The University of Rhode Island



University Advancement





The University of Rhode Island



Research & Economic Development

