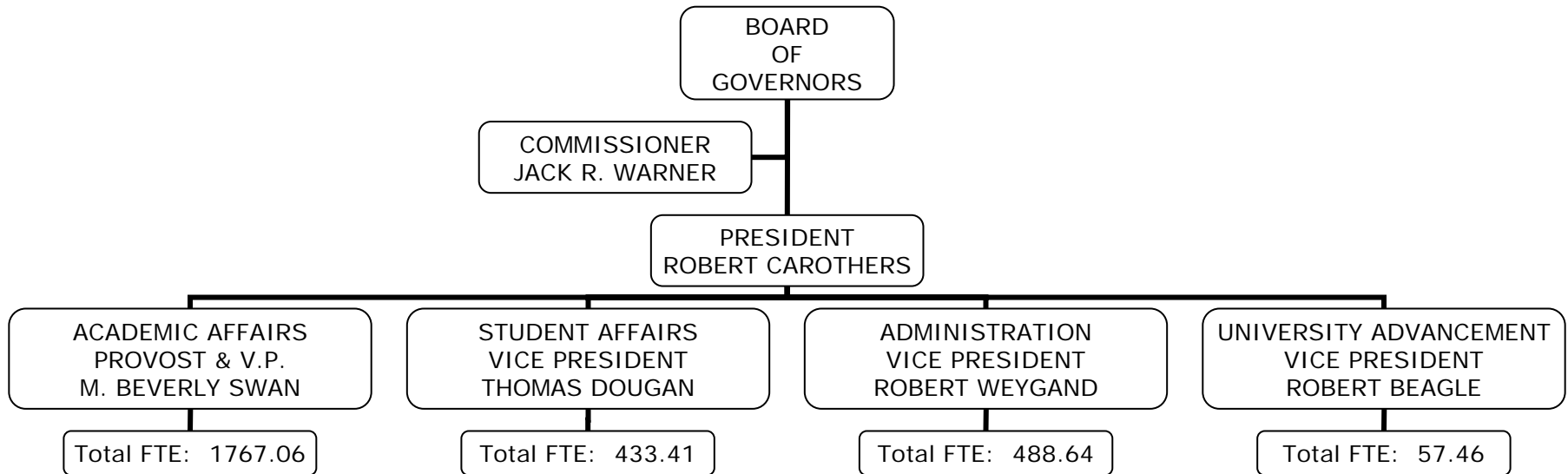




The University of Rhode Island



FY07 Allocation – Organizational Chart





The University of Rhode Island



Summary of FTE's

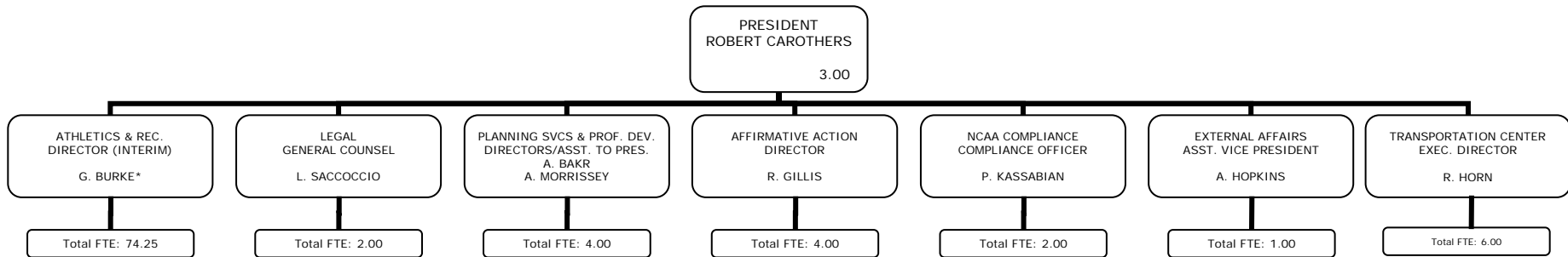
OFFICE CATEGORY	PRESIDENT	ACADEMIC AFFAIRS	STUDENT AFFAIRS	ADMINISTRATION	UNIVERSITY ADVANCEMENT	TOTAL
UNRESTRICTED	60.00	1213.61	45.15	377.56	46.96	1743.28
UNRESTRICTED AD HOC	24.50	129.05	0.41	8.57	5.00	167.53
UNREST - INTERDEPT. TRANSFERS	5.75	48.34	0.00	8.00	0.00	62.09
RESTRICTED - SPONSOR	6.00	350.66	4.00	42.50	0.00	403.16
RESTRICTED - AUXILIARY	0.00	0.00	351.10	0.00	0.00	351.10
RESTRICTED - AUXILIARY LIMITED	0.00	0.00	32.25	0.00	0.00	32.25
RESTRICTED - ENTERPRISE	0.00	0.00	0.00	34.76	0.00	34.76
RESTRICTED - ENTERPRISE LIMITED	0.00	0.00	0.00	15.65	0.00	15.65
RESTRICTED - OTHER	0.00	25.40	0.50	0.60	5.50	32.00
AGENCY (Institute for International Sports)	0.00	0.00	0.00	1.00	0.00	1.00
TOTAL	96.25	1767.06	433.41	488.64	57.46	2842.82



The University of Rhode Island



President's Office



ADMINISTRATION	10.00	LEGAL COUNSEL	2.00	PLANNING SERVICES	4.00	AFFIRMATIVE ACTION	4.00	NCAA COMPLIANCE	1.00	EXTERNAL AFFAIRS	1.00	TRANSPORTATION CENTER	0.00
EVENT MANAGEMENT	2.00												
MACKAL FIELDHOUSE	7.00												
MEN'S BASEBALL	1.00												
MEN'S BASKETBALL	1.00												
MEN'S FOOTBALL	6.00												
MEN'S SOCCER	1.00												
MEN'S TRACK	1.00												
PROPERTY CONTROL	5.00												
SPORTS INFO	1.00												
TRAINING ROOM	1.00												
WOMEN'S BASKETBALL	2.00												
WOMEN'S CREW	2.00												
WOMEN'S GYMNASTICS	1.00												
WOMEN'S SOCCER	1.00												
WOMEN'S SOFTBALL	1.00												
WOMEN'S TRACK	1.00												
WOMEN'S VOLLEYBALL	1.00												
AD HOC	23.50	AD HOC	0.00	AD HOC	0.00	AD HOC	0.00	AD HOC	1.00	AD HOC	0.00	AD HOC	0.00
UNR. INTERDEPT. TRANSFERS	5.75	UNR. INTERDEPT. TRANSFERS	0.00	UNR. INTERDEPT. TRANSFERS	0.00	UNR. INTERDEPT. TRANSFERS	0.00	UNR. INTERDEPT. TRANSFERS	0.00	UNR. INTERDEPT. TRANSFERS	0.00	UNR. INTERDEPT. TRANSFERS	0.00
RESTRICTED - SPONSOR	0.00	RESTRICTED - SPONSOR	0.00	RESTRICTED - SPONSOR	0.00	RESTRICTED - SPONSOR	0.00	RESTRICTED - SPONSOR	0.00	RESTRICTED - SPONSOR	0.00	RESTRICTED SPONSOR	6.00

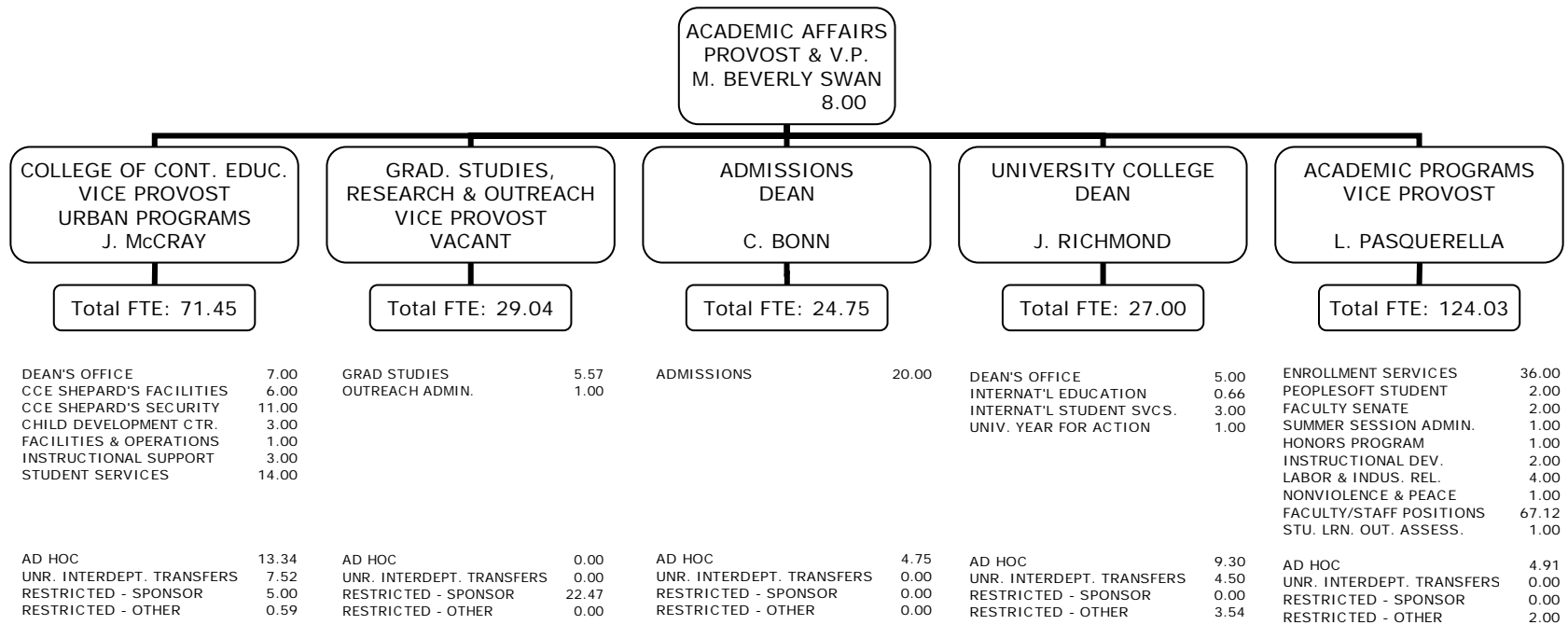
* dotted line report to V.P. of Student Affairs



The University of Rhode Island



Academic Affairs

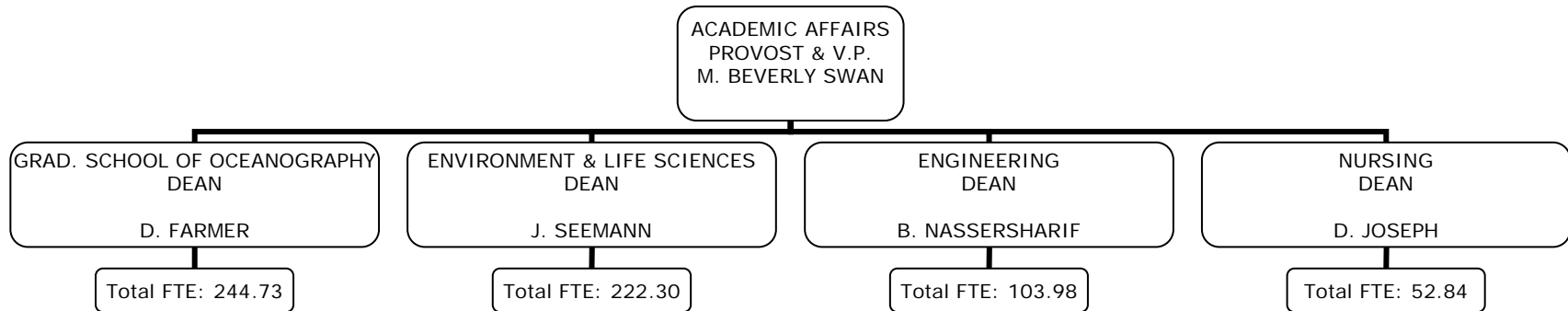




The University of Rhode Island



Academic Affairs (continued)



DEAN'S OFFICE	3.50
COASTAL INSTITUTE	1.00
COASTAL RESOURCE CTR	2.00
CUSTODIAL	12.00
FACILITIES MANAGEMENT	4.40
FACULTY SUPPORT	1.69
INSTRUCTION	30.52
MAINTENANCE	5.50
MARINE PROGRAMS	2.00
NBC BUSINESS OFFICE	2.00
SEA GRANT	0.65
SEA GRANT MATCH	1.00
SECURITY	6.00
STOCKROOM	1.52
STUDENT AFFAIRS	2.00

AD HOC	3.50
UNR. INTERDEPT. TRANSFERS	11.00
RESTRICTED - SPONSOR	145.95
RESTRICTED - OTHER	8.50

DEAN'S OFFICE	11.00
BIOCHEM/MICROBIO/MOLEC.	14.00
BIOLOGICAL SCIENCES	20.00
COMM PLAN & LANDSCAPE	8.00
COOPERATIVE EXTENSION	3.01
ENVIRONMENTAL & NAT.	11.00
FISH ANIMAL & VET SCI	13.55
FOOD SCI & TECH	9.60
GEOSCIENCES	9.00
MARINE AFFAIRS	7.00
NATURAL RESOURCE SCI	12.35
PLANT SCIENCE	13.60

AD HOC	10.22
UNR. INTERDEPT. TRANSFERS	3.40
RESTRICTED - SPONSOR	74.71
RESTRICTED - OTHER	1.86

DEAN'S OFFICE	8.00
CHEMICAL ENGINEERING	11.57
CIVIL ENGINEERING	13.00
ELECTRICAL ENGINEERING	22.00
ENGR COMPUTER CTR	2.00
INDUSTRIAL ENGINEERING	8.00
MECHANICAL ENGINEERING	19.00
OCEAN ENGINEERING	11.00

AD HOC	0.00
UNR. INTERDEPT. TRANSFERS	0.50
RESTRICTED - SPONSOR	8.19
RESTRICTED - OTHER	0.72

DEAN'S OFFICE	3.00
INSTRUCTION	33.77

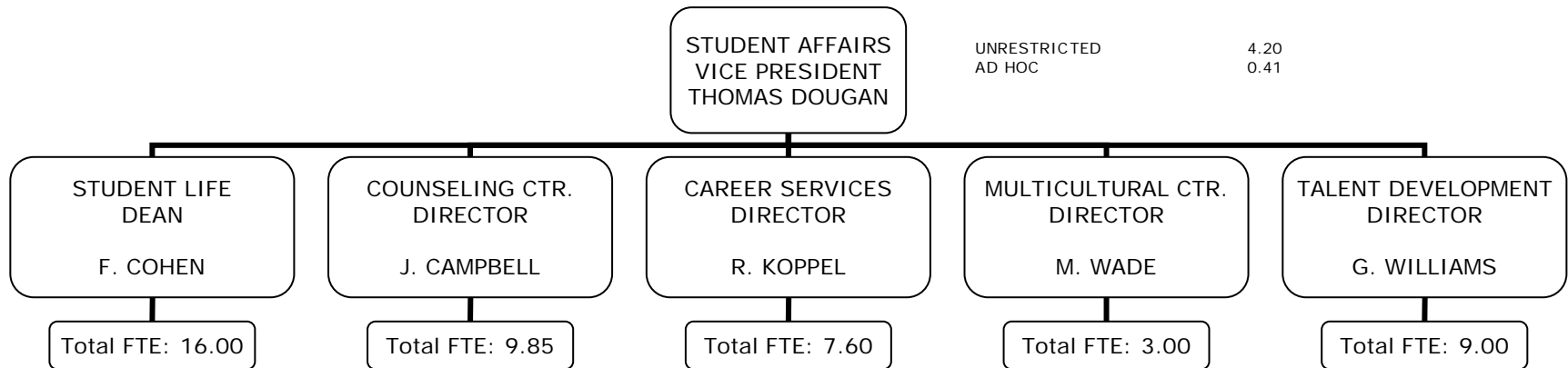
AD HOC	10.13
UNR. INTERDEPT. TRANSFERS	0.00
RESTRICTED - SPONSOR	5.94
RESTRICTED - OTHER	0.00



The University of Rhode Island



Student Affairs



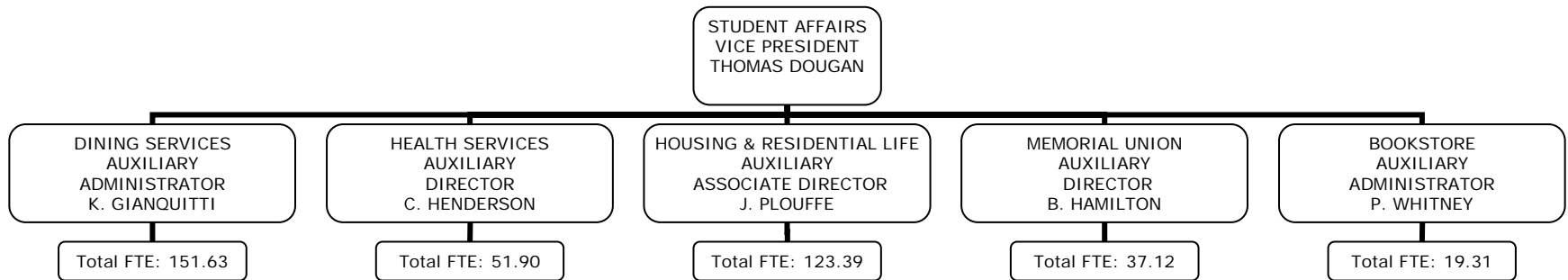
STUDENT LIFE	7.50	COUNSELING CENTER	9.85	CAREER SERVICES	7.60	MULTICULTURAL CENTER	3.00	TALENT DEVELOPMENT	9.00
WOMEN'S CENTER	4.00								
AD HOC	0.00	AD HOC	0.00	AD HOC	0.00	AD HOC	0.00	AD HOC	0.00
UNR. INTERDEPT. TRANSFERS	0.00	UNR. INTERDEPT. TRANSFERS	0.00	UNR. INTERDEPT. TRANSFERS	0.00	UNR. INTERDEPT. TRANSFERS	0.00	UNR. INTERDEPT. TRANSFERS	0.00
RESTRICTED - SPONSOR	4.00	RESTRICTED - SPONSOR	0.00	RESTRICTED - SPONSOR	0.00	RESTRICTED - SPONSOR	0.00	RESTRICTED - SPONSOR	0.00
RESTRICTED - OTHER	0.50	RESTRICTED - OTHER	0.00	RESTRICTED - OTHER	0.00	RESTRICTED - OTHER	0.00	RESTRICTED - OTHER	0.00



The University of Rhode Island



Student Affairs (continued)



DINING *	127.49	HEALTH SERVICES *	51.13	HRL *	120.39	MEMORIAL UNION *	37.12	BOOKSTORE *	14.97
AUX. LIMITED	24.14	AUX. LIMITED	0.77	AUX. LIMITED	3.00	AUX. LIMITED	0.00	AUX. LIMITED	4.34

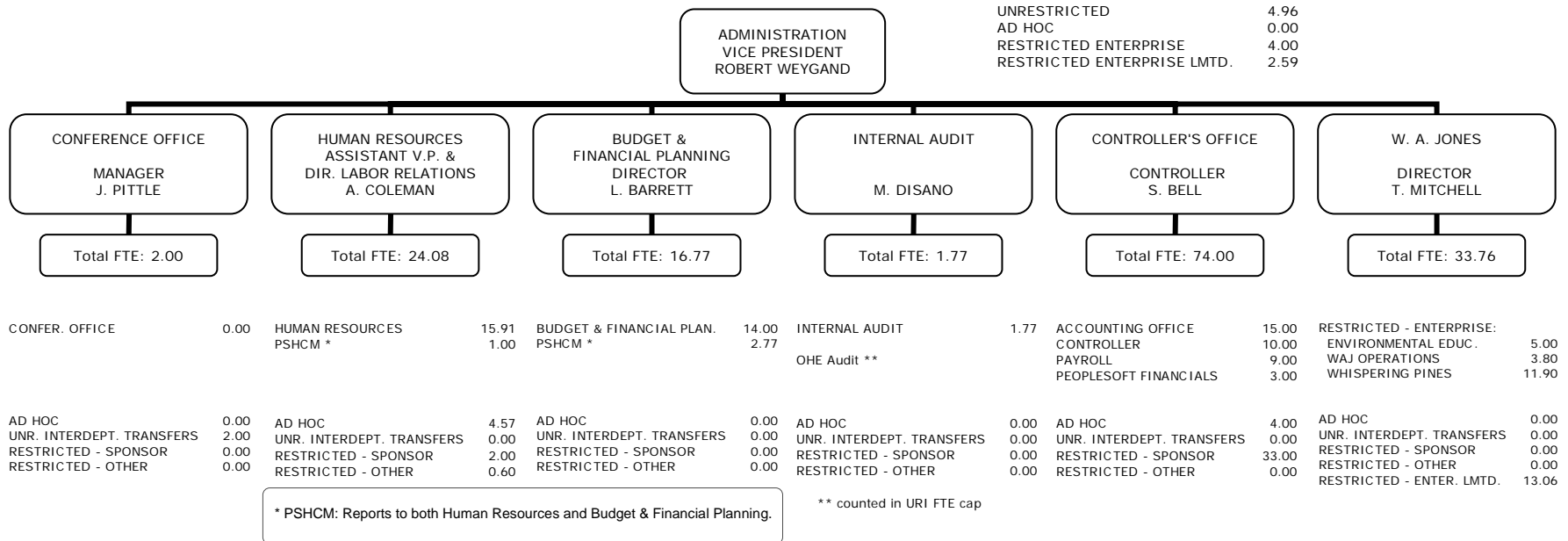
* Indicates Auxiliary funded. Program responsibility lies with VP Student Affairs; financial responsibility lies with Chief Fiscal Officer.



The University of Rhode Island



Administration





The University of Rhode Island



Administration (continued)

