

Table 1. Proposals processed by the Office of Sponsored Projects Review FY07 through October FY11

Month	FY07				FY08			
	Number		Amount Requested		Number		Amount Requested	
	Count	Cum. Ct.	Amount	Cum. Amt.	Count	Cum. Ct.	Amount	Cum. Amt.
July	47	47	\$20,603,130.99	\$20,603,130.99	54	54	\$33,842,834.37	\$33,842,834.37
August	47	94	\$16,827,319.64	\$37,430,450.63	48	102	\$18,649,661.71	\$52,492,496.08
September	37	131	\$13,452,282.90	\$50,882,733.53	39	141	\$6,908,530.31	\$59,401,026.39
October	78	209	\$21,421,348.77	\$72,304,082.30	61	202	\$19,838,573.08	\$79,239,599.47
November	52	261	\$12,236,742.00	\$84,540,824.30	46	248	\$10,043,051.00	\$89,282,650.47
December	39	300	\$9,375,521.40	\$93,916,345.70	49	297	\$19,600,544.28	\$108,883,194.75
January	56	356	\$15,832,150.81	\$109,748,496.51	53	350	\$14,342,315.04	\$123,225,509.79
February	68	424	\$41,778,787.00	\$151,527,283.51	63	413	\$25,700,702.83	\$148,926,212.62
March	57	481	\$24,295,050.10	\$175,822,333.61	35	448	\$11,825,803.96	\$160,752,016.58
April	36	517	\$5,363,201.08	\$181,185,534.69	63	511	\$29,523,641.59	\$190,275,658.17
May	68	585	\$25,343,205.37	\$206,528,740.06	63	574	\$23,450,049.82	\$213,725,707.99
June	75	660	\$27,241,525.21	\$233,770,265.27	64	638	\$25,890,560.06	\$239,616,268.05
Total	660	660	\$233,770,265.27	\$233,770,265.27	638	638	\$239,616,268.05	\$239,616,268.05

Month	FY09				FY10				FY11			
	Number		Amount Requested		Number		Amount Requested		Number		Amount Requested	
	Count	Cum. Ct.	Amount	Cum. Amt.	Count	Cum. Ct.	Amount	Cum. Amt.	Count	Cum. Ct.	Amount	Cum. Amt.
July	58	58	\$51,217,673.28	\$51,217,673.28	66	66	\$42,422,122.81	\$42,422,122.81	51	51	\$21,761,969.00	\$21,761,969.00
August	54	112	\$33,046,189.43	\$84,263,862.71	44	110	\$21,989,154.75	\$64,411,277.56	41	92	\$10,974,346.65	\$32,736,315.65
September	45	157	\$14,489,338.81	\$98,753,201.52	65	175	\$24,981,440.51	\$89,392,718.07	58	150	\$14,514,605.59	\$47,250,921.24
October	64	221	\$14,304,818.80	\$113,058,020.32	71	246	\$26,069,892.51	\$115,462,610.58	77	227	\$45,971,850.00	\$93,222,771.24
November	55	276	\$31,661,764.20	\$144,719,784.52	61	307	\$82,325,998.56	\$197,788,609.14				
December	47	323	\$10,999,368.29	\$155,719,152.81	40	347	\$14,712,155.63	\$212,500,764.77				
January	43	366	\$56,837,864.00	\$212,557,016.81	32	379	\$13,988,707.00	\$226,489,471.77				
February	65	431	\$24,785,454.88	\$237,342,471.69	85	464	\$41,042,021.00	\$267,531,492.77				
March	52	483	\$18,120,178.56	\$255,462,650.25	59	523	\$29,556,110.16	\$297,087,602.93				
April	93	576	\$34,510,660.56	\$289,973,310.81	65	588	\$17,276,375.95	\$314,363,978.88				
May	86	662	\$62,914,486.43	\$352,887,797.24	46	634	\$16,158,165.10	\$330,522,143.98				
June	82	744	\$60,860,874.79	\$413,748,672.03	76	710	\$35,768,895.09	\$366,291,039.07				
Total	744	744	\$413,748,672.03	\$413,748,672.03	710	710	\$366,291,039.07	\$366,291,039.07	227	227	\$93,222,771.24	\$93,222,771.24

Figure 1a. Cumulative totals of numbers of proposals submitted FY07 through October FY11

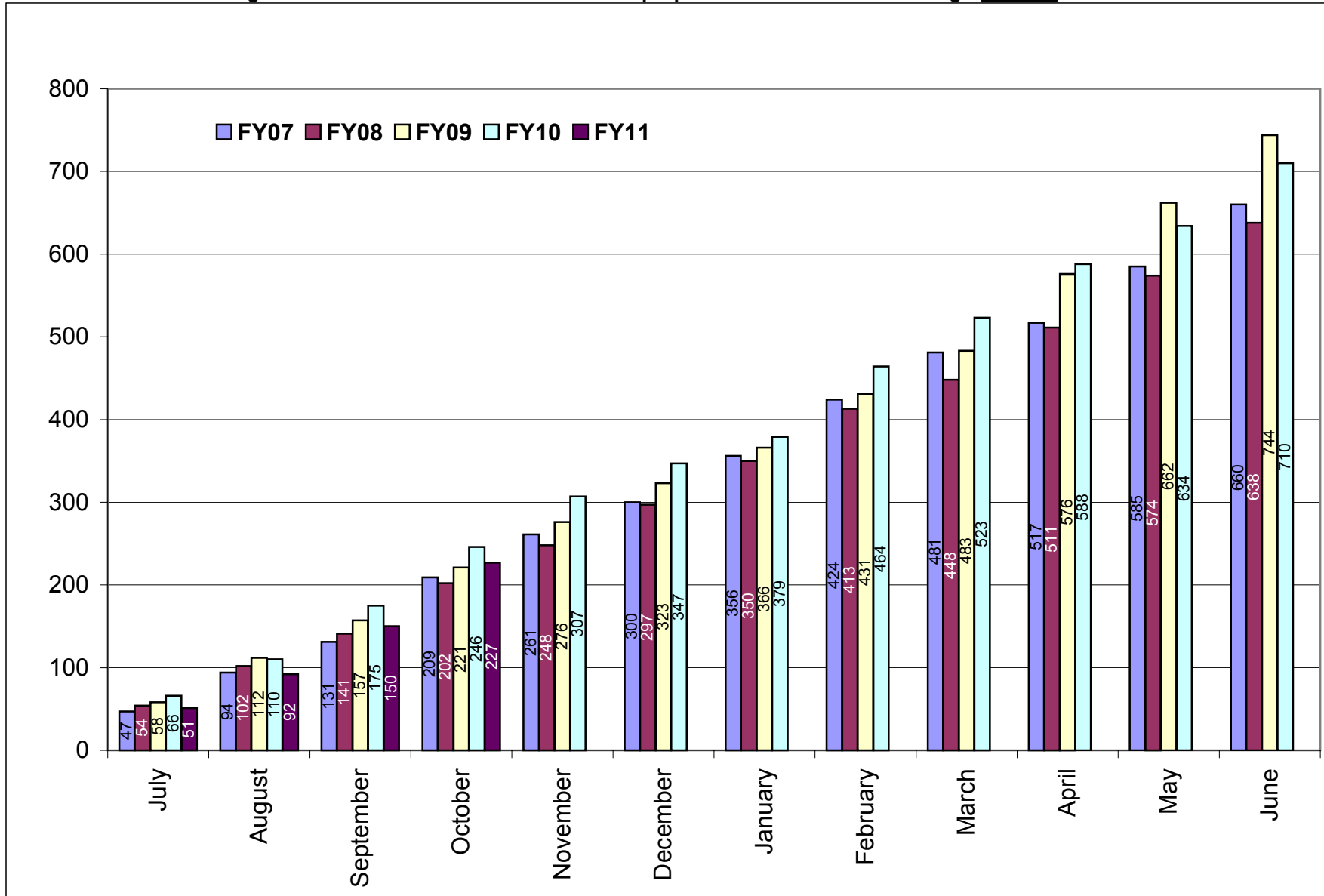


Figure 1b. Cumulative totals of proposal amounts requested FY07 through October FY11

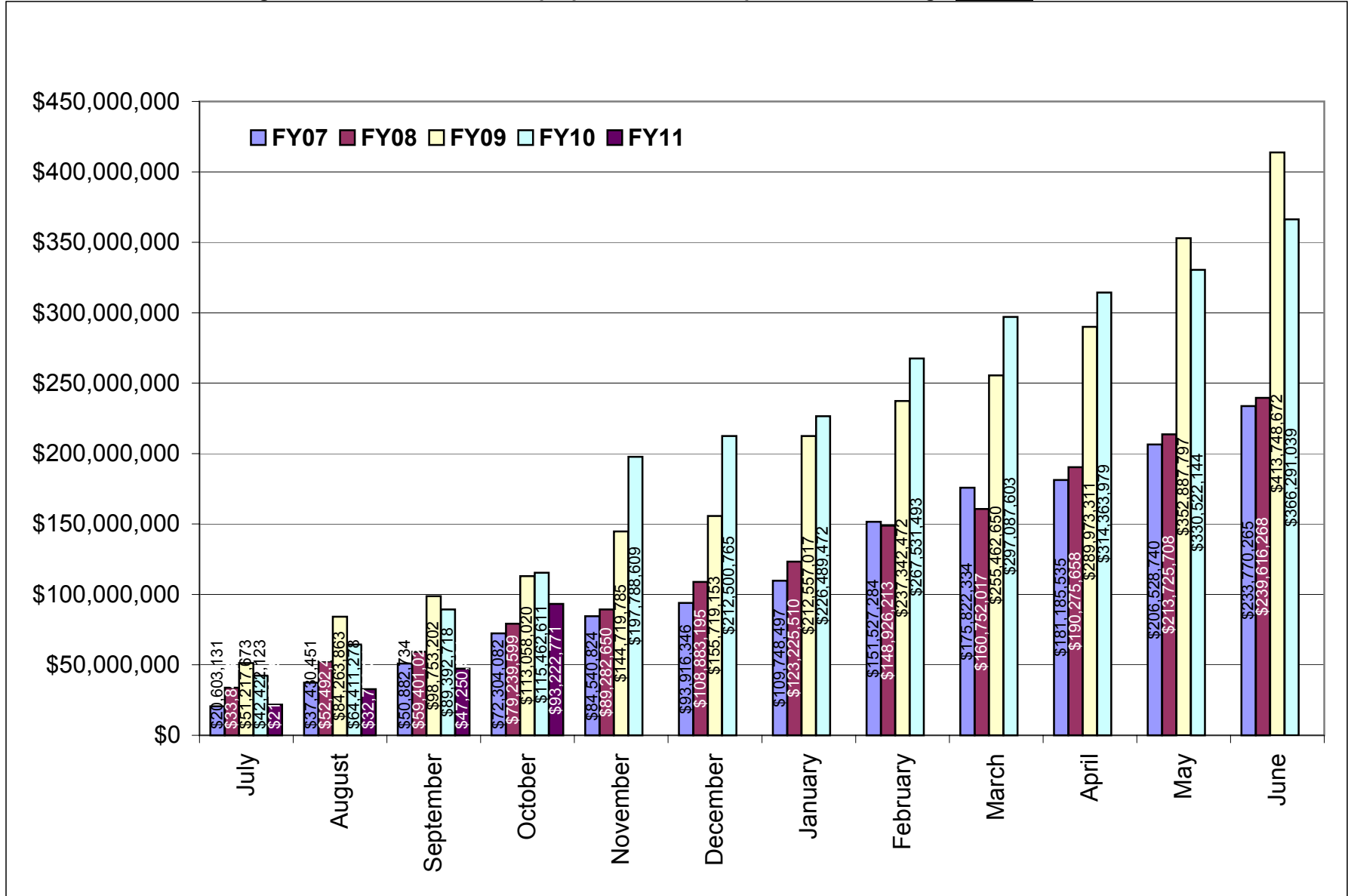


Table 2. Awards processed by the Office of Sponsored Projects Review FY07 through October FY11

Month	FY07				FY08			
	Number		Amount Awarded		Number		Amount Awarded	
	Count	Cum. Ct.	Amount	Cum. Amt.	Count	Cum. Ct.	Amount	Cum. Amt.
July	44	44	\$3,630,455.25	\$3,630,455.25	20	20	\$2,909,307.42	\$2,909,307.42
August	43	87	\$4,738,246.38	\$8,368,701.63	44	64	\$7,784,335.67	\$10,693,643.09
September	31	118	\$7,322,287.00	\$15,690,988.63	51	115	\$5,958,412.96	\$16,652,056.05
October	47	165	\$7,808,245.88	\$23,499,234.51	47	162	\$6,965,281.97	\$23,617,338.02
November	35	200	\$3,765,622.92	\$27,264,857.43	25	187	\$2,868,646.00	\$26,485,984.02
December	28	228	\$5,077,394.86	\$32,342,252.29	29	216	\$2,706,955.70	\$29,192,939.72
January	27	255	\$2,070,155.00	\$34,412,407.29	29	245	\$2,669,738.69	\$31,862,678.41
February	29	284	\$3,346,724.45	\$37,759,131.74	24	269	\$2,253,601.01	\$34,116,279.42
March	39	323	\$3,982,337.70	\$41,741,469.44	27	296	\$6,247,390.82	\$40,363,670.24
April	29	352	\$4,053,313.60	\$45,794,783.04	42	338	\$5,655,452.97	\$46,019,123.21
May	31	383	\$7,489,552.71	\$53,284,335.75	39	377	\$3,810,983.48	\$49,830,106.69
June	54	437	\$8,974,656.16	\$62,258,991.91	57	434	\$13,904,362.84	\$63,734,469.53
Total	437	437	\$62,258,991.91	\$62,258,991.91	434	434	\$63,734,469.53	\$63,734,469.53

Month	FY09				FY10				FY11			
	Number		Amount Awarded		Number		Amount Awarded		Number		Amount Awarded	
	Count	Cum. Ct.	Amount	Cum. Amt.	Count	Cum. Ct.	Amount	Cum. Amt.	Count	Cum. Ct.	Amount	Cum. Amt.
July	24	24	\$2,141,955.29	\$2,141,955.29	28	28	\$8,427,538.60	\$8,427,538.60	39	39	\$10,965,465.50	\$10,965,465.50
August	46	70	\$8,247,877.00	\$10,389,832.29	43	71	\$14,167,899.21	\$22,595,437.81	32	71	\$15,188,275.36	\$26,153,740.86
September	52	122	\$18,410,083.68	\$28,799,915.97	70	141	\$12,469,481.84	\$35,064,919.65	59	130	\$5,730,574.59	\$31,884,315.45
October	39	161	\$3,249,691.41	\$32,049,607.38	46	187	\$7,664,128.20	\$42,729,047.85	49	179	\$5,899,178.80	\$37,783,494.25
November	27	188	\$5,407,192.48	\$37,456,799.86	26	213	\$2,647,733.00	\$45,376,780.85				
December	33	221	\$2,800,282.84	\$40,257,082.70	30	243	\$4,769,306.73	\$50,146,087.58				
January	22	243	\$6,328,758.19	\$46,585,840.89	29	272	\$4,596,231.77	\$54,742,319.35				
February	30	273	\$4,286,284.20	\$50,872,125.09	36	308	\$8,022,999.41	\$62,765,318.76				
March	31	304	\$2,747,671.27	\$53,619,796.36	27	335	\$3,315,500.05	\$66,080,818.81				
April	39	343	\$5,819,654.03	\$59,439,450.39	47	382	\$16,843,832.59	\$82,924,651.40				
May	36	379	\$11,297,894.00	\$70,737,344.39	30	412	\$10,443,425.00	\$93,368,076.40				
June	70	449	\$11,864,403.60	\$82,601,747.99	48	460	\$8,138,037.00	\$101,506,113.40				
Total	449	449	\$82,601,747.99	\$82,601,747.99	460	460	\$101,506,113.40	\$101,506,113.40	179	179	\$37,783,494.25	\$37,783,494.25

Figure 2a. Cumulative totals of numbers of awards received FY07 through October FY11

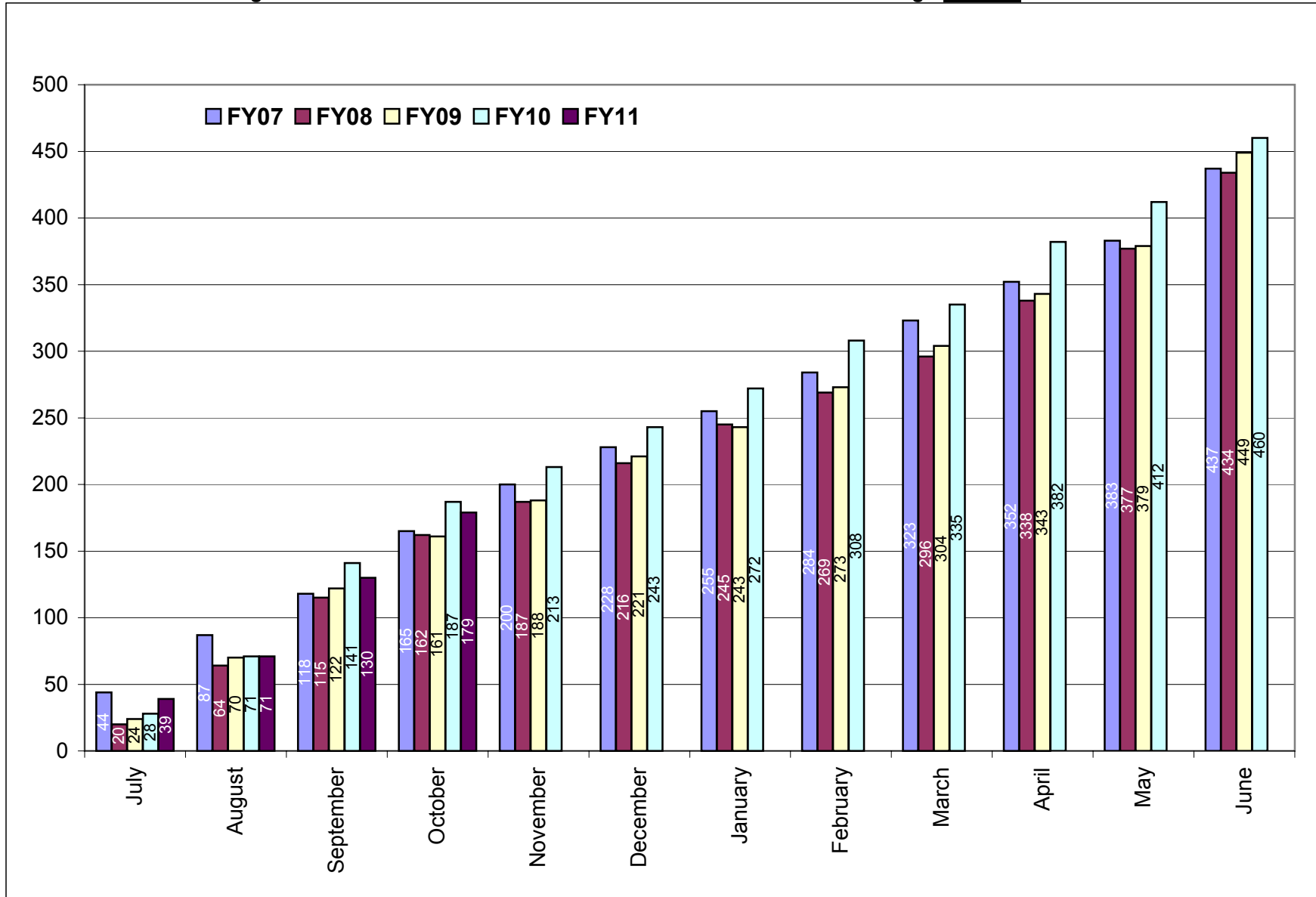


Figure 2b. Cumulative totals of award amounts received FY07 through October FY11

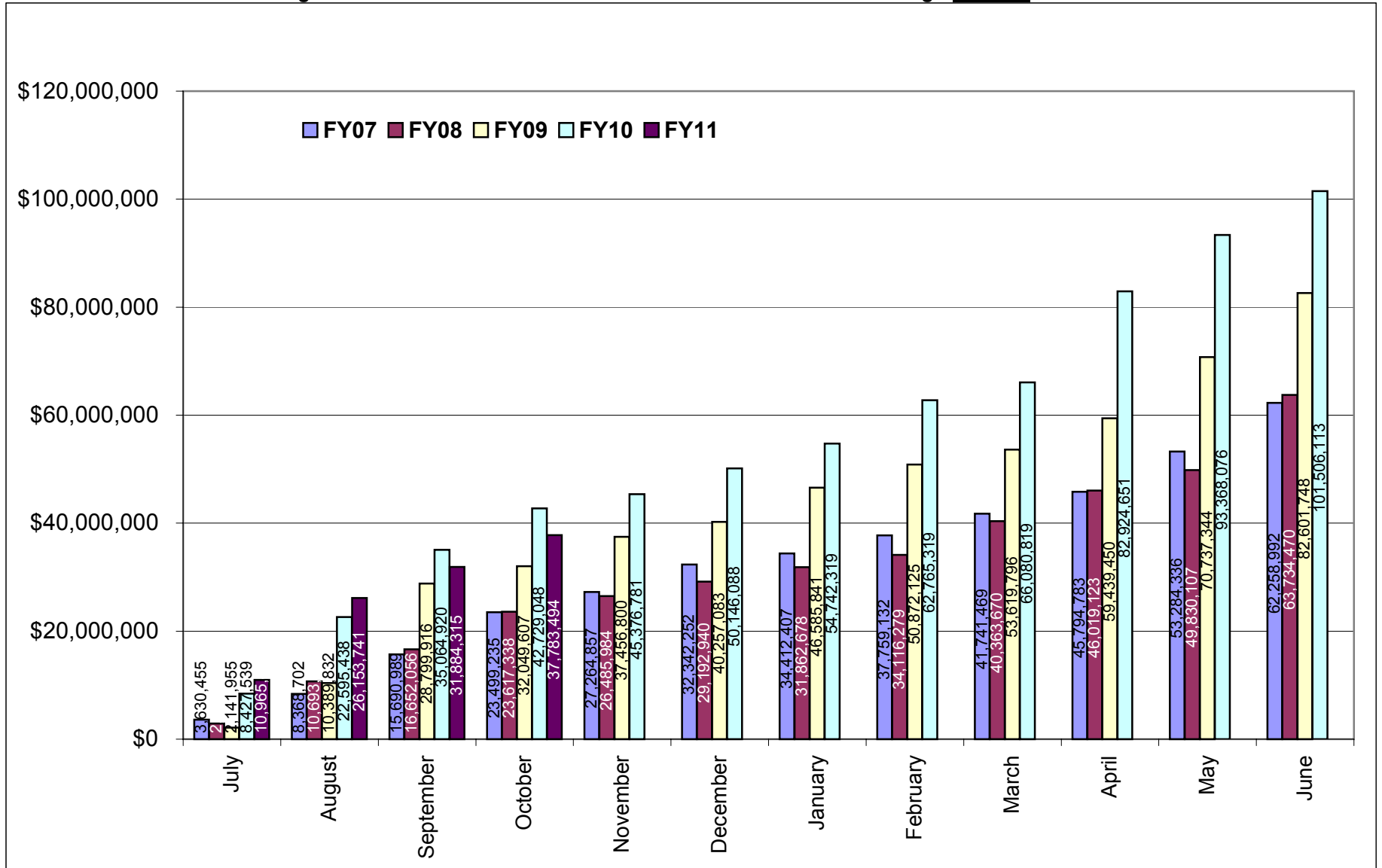


Table 3. Summary of awards received by administrative and academic units FY07 through October FY11

Administrative	<u>FY07</u>	<u>FY08</u>	<u>FY09</u>	<u>FY10</u>	<u>FY11 YTD</u>	<u>Totals</u>
PRESIDENT'S OFFICE	\$0.00	\$4,320.00	\$0.00	\$0.00	\$2,900.00	\$7,220.00
PROVOST	\$3,011.60	\$22,500.00	\$22,594.29	\$1,306,675.00	\$48,742.65	\$1,403,523.54
VP, ADMINISTRATION	\$356,399.00	\$1,323,775.20	\$3,847,613.58	\$13,879,383.50	\$738,003.50	\$20,145,174.78
VP, RESEARCH & ECON DEV	\$131,299.00	\$0.00	\$0.00	\$2,512,500.00	\$8,072,900.00	\$10,716,699.00
VP, STUDENT AFFAIRS	\$652,222.00	\$287,357.80	\$498,340.56	\$151,422.90	\$0.00	\$1,589,343.26
Academic						
ARTS & SCIENCES	\$8,078,890.27	\$12,885,156.25	\$11,295,659.54	\$9,737,385.85	\$4,350,787.35	\$46,347,879.26
BUSINESS ADMINISTRATION	\$0.00	\$0.00	\$10,211.60	\$43,901.60	\$10,211.60	\$64,324.80
CONTINUING EDUCATION	\$0.00	\$0.00	\$0.00	\$0.00	\$0.00	\$0.00
ENGINEERING	\$4,744,073.66	\$4,525,285.47	\$5,310,483.76	\$8,643,672.05	\$2,903,797.45	\$26,127,312.39
ENVIRONMENT & LIFE SCIENCES	\$13,678,422.86	\$9,507,339.56	\$22,944,993.28	\$16,232,137.30	\$9,282,310.96	\$71,645,203.96
GRADUATE SCHOOL	\$0.00	\$0.00	\$125,718.00	\$51,366.00	\$0.00	\$177,084.00
HUMAN SCIENCE & SERVICES	\$6,394,476.43	\$6,407,781.91	\$2,751,536.90	\$2,970,596.81	\$689,897.50	\$19,214,289.55
NURSING	\$835,971.48	\$927,796.54	\$1,075,832.30	\$2,206,995.80	\$195,629.15	\$5,242,225.27
OCEANOGRAPHY	\$20,520,548.16	\$20,999,179.82	\$27,506,417.65	\$32,473,931.12	\$9,079,192.74	\$110,579,269.49
PHARMACY	\$6,779,109.45	\$6,744,604.98	\$7,116,825.53	\$11,195,695.47	\$2,319,206.35	\$34,155,441.78
UNIVERSITY COLLEGE	\$84,568.00	\$85,160.00	\$95,521.00	\$96,550.00	\$89,915.00	\$451,714.00
UNIVERSITY LIBRARY	\$0.00	\$14,212.00	\$0.00	\$3,900.00	\$0.00	\$18,112.00
Totals	\$62,258,991.91	\$63,734,469.53	\$82,601,747.99	\$101,506,113.40	\$37,783,494.25	\$347,884,817.08

Table 3a. Awards received by departments within colleges FY07 through October FY11

<u>College</u>	<u>FY07</u>	<u>FY08</u>	<u>FY09</u>	<u>FY10</u>	<u>FY11 YTD</u>	<u>Totals</u>
Arts and Sciences	\$8,078,890.27	\$12,885,156.25	\$11,295,659.54	\$9,737,385.85	\$4,350,787.35	\$46,347,879.26
ART	\$6,921.12	\$384.66	\$0.00	\$0.00	\$0.00	\$7,305.78
CANCER PREVENTION RESEARCH CTR	\$3,351,982.25	\$5,075,381.00	\$4,545,097.00	\$4,471,253.89	\$970,139.20	\$18,413,853.34
CHEMISTRY	\$896,017.74	\$5,120,789.90	\$3,128,244.50	\$1,430,340.26	\$2,225,957.00	\$12,801,349.40
COMMUNICATION STUDIES	\$118,536.80	\$119,566.00	\$119,815.40	\$0.00	\$0.00	\$357,918.20
COMPUTER SCIENCE/STATISTICS	\$1,079,665.06	\$288,518.60	\$1,043,436.00	\$977,411.00	\$398,442.00	\$3,787,472.66
DEAN'S OFFICE	\$0.00	\$0.00	\$0.00	\$0.00	\$48,742.65	\$48,742.65
ECONOMICS	\$0.00	\$0.00	\$0.00	\$0.00	\$0.00	\$0.00
FEINSTEIN HUNGER CTR(DEAN'S OFFICE)	\$686,724.00	\$602,155.00	\$670,619.00	\$758,760.00	\$0.00	\$2,718,258.00
HISTORY	\$56,000.00	\$79,417.00	\$39,978.00	\$39,999.00	\$45,983.00	\$261,377.00
INTERNATIONAL ENGINEERING PROG	\$0.00	\$0.00	\$0.00	\$31,031.25	\$0.00	\$31,031.25
LANGUAGES	\$227,331.25	\$75,260.25	\$664,203.34	\$360,220.25	\$0.00	\$1,327,015.09
LIBRARY AND INFORMATION STUDIES	\$0.00	\$20,496.40	\$21,750.90	\$22,064.40	\$0.00	\$64,311.70
MATHEMATICS	\$0.00	\$22,673.00	\$0.00	\$0.00	\$0.00	\$22,673.00
PHYSICS	\$431,913.00	\$747,894.00	\$800,864.00	\$1,331,280.00	\$0.00	\$3,311,951.00
PSYCHOLOGY (EXCLUDES CPRC)	\$1,136,127.05	\$373,320.44	\$254,151.40	\$266,331.20	\$604,304.50	\$2,634,234.59
SOCIOLOGY/ANTHROPOLOGY	\$75,922.00	\$190,900.00	\$7,500.00	\$48,694.60	\$57,219.00	\$380,235.60
THEATRE	\$11,750.00	\$0.00	\$0.00	\$0.00	\$0.00	\$11,750.00
WOMEN'S STUDIES	\$0.00	\$168,400.00	\$0.00	\$0.00	\$0.00	\$168,400.00
Business Administration	\$0.00	\$0.00	\$10,211.60	\$43,901.60	\$10,211.60	\$64,324.80
ACCOUNTING	\$0.00	\$0.00	\$0.00	\$0.00	\$0.00	\$0.00
DEAN'S OFFICE	\$0.00	\$0.00	\$0.00	\$0.00	\$0.00	\$0.00
FACULTY - INSTRUCTION	\$0.00	\$0.00	\$0.00	\$33,690.00	\$0.00	\$33,690.00
MANAGEMENT	\$0.00	\$0.00	\$10,211.60	\$10,211.60	\$10,211.60	\$30,634.80

<u>College</u>	<u>FY07</u>	<u>FY08</u>	<u>FY09</u>	<u>FY10</u>	<u>FY11 YTD</u>	<u>Totals</u>
Contiuing Education	\$0.00	\$0.00	\$0.00	\$0.00	\$0.00	\$0.00
LABOR RESEARCH CENTER	\$0.00	\$0.00	NA	NA	NA	\$0.00
Engineering	\$4,744,073.66	\$4,525,285.47	\$5,310,483.76	\$8,643,672.05	\$2,903,797.45	\$26,127,312.39
CHEMICAL ENGINEERING	\$1,370,759.22	\$1,717,995.69	\$1,243,131.06	\$1,326,159.02	\$1,788,040.45	\$7,446,085.44
CIVIL/ENVIRONMENTAL ENGINEERING	\$352,797.00	\$133,710.00	\$801,188.00	\$375,636.00	\$22,000.00	\$1,685,331.00
DEAN'S OFFICE	\$91,969.00	\$0.00	\$0.00	\$0.00	\$0.00	\$91,969.00
ELECTRICAL ENGINEERING	\$660,679.24	\$577,515.00	\$1,459,487.20	\$2,891,127.00	\$441,286.00	\$6,030,094.44
MECHANICAL & INDUSTRIAL SYS EGR	\$1,478,650.00	\$1,474,196.75	\$764,002.00	\$1,471,881.75	\$439,176.00	\$5,627,906.50
OCEAN ENGINEERING	\$789,219.20	\$621,868.03	\$1,042,675.50	\$2,578,868.28	\$213,295.00	\$5,245,926.01
Environment and Life Sciences	\$13,678,422.86	\$9,507,339.56	\$22,944,993.28	\$16,232,137.30	\$9,282,310.96	\$71,645,203.96
BIOLOGICAL SCIENCES	\$184,559.16	\$805,390.40	\$343,627.90	\$864,651.05	\$7,000.00	\$2,205,228.51
CELL AND MOLECULAR BIOLOGY	\$683,903.41	\$827,174.00	\$1,478,458.55	\$3,797,940.90	\$2,659,886.50	\$9,447,363.36
COMMUNITY PLANNING/AREA DEVEL	\$4,000.00	\$5,000.00	\$24,380.00	\$0.00	\$0.00	\$33,380.00
COOPERATIVE EXTENSION	\$163,088.00	\$121,693.70	\$355,807.50	\$518,818.00	\$386,524.10	\$1,545,931.30
DEAN'S OFFICE	\$2,430,677.48	\$127,296.80	\$6,420,744.40	\$760,250.60	\$0.00	\$9,738,969.28
ENV & NAT RESOURCE ECONOMICS	\$690,729.76	\$544,219.24	\$892,138.90	\$1,042,235.60	\$208,164.00	\$3,377,487.50
FISHERIES, ANIMAL & VET SCIENCE	\$3,628,840.72	\$918,120.24	\$587,588.40	\$490,715.20	\$465,492.30	\$6,090,756.86
GEOSCIENCE	\$430,437.42	\$557,322.73	\$5,765,588.35	\$153,164.30	\$111,132.70	\$7,017,645.50
MARINE AFFAIRS	\$253,727.94	\$262,509.28	\$226,873.40	\$107,965.75	\$167,000.00	\$1,018,076.37
NATURAL RESOURCES SCIENCE	\$2,387,194.25	\$2,686,576.33	\$4,115,165.88	\$4,559,105.25	\$3,884,341.86	\$17,632,383.57
NUTRITION AND FOOD SCIENCES	\$1,110,031.25	\$1,992,011.59	\$1,795,892.85	\$2,012,483.00	\$0.00	\$6,910,418.69
PLANT SCIENCE	\$1,711,233.47	\$660,025.25	\$938,727.15	\$1,924,807.65	\$1,392,769.50	\$6,627,563.02

NA - Not Applicable (department did not exist or was in another college)

<u>College</u>	<u>FY07</u>	<u>FY08</u>	<u>FY09</u>	<u>FY10</u>	<u>FY11 YTD</u>	<u>Totals</u>
Graduate School	\$0.00	\$0.00	\$125,718.00	\$51,366.00	\$0.00	\$177,084.00
Human Science and Services	\$6,394,476.43	\$6,407,781.91	\$2,751,536.90	\$2,970,596.81	\$689,897.50	\$19,214,289.55
COMMUNICATIVE DISORDERS	\$399,398.33	\$312,469.66	\$0.00	\$26,800.00	\$50,000.00	\$788,667.99
DEAN'S OFFICE	\$396,398.00	\$588,558.00	\$1,163,925.00	\$231,454.81	\$0.00	\$2,380,335.81
EDUCATION	\$4,513,903.60	\$3,619,601.40	\$1,029,867.80	\$1,072,212.00	\$268,385.00	\$10,503,969.80
GERONTOLOGY	\$0.00	\$634,115.55	\$142,102.00	\$757,040.40	\$207,449.50	\$1,740,707.45
HUMAN DEV/COUNSEL/FAM STUDIES	\$337,842.00	\$193,755.30	\$273,540.10	\$90,059.00	\$164,063.00	\$1,059,259.40
KINESIOLOGY	\$192,568.50	\$0.00	\$142,102.00	\$267,673.20	\$0.00	\$602,343.70
PHYSICAL THERAPY	\$449,530.00	\$1,059,282.00	\$0.00	\$521,058.00	\$0.00	\$2,029,870.00
TEXTILES/FASHION MERCHAND/DESIGN	\$104,836.00	\$0.00	\$0.00	\$4,299.40	\$0.00	\$109,135.40
Nursing	\$835,971.48	\$927,796.54	\$1,075,832.30	\$2,206,995.80	\$195,629.15	\$5,242,225.27
Oceanography	\$20,520,548.16	\$20,999,179.82	\$27,506,417.65	\$32,473,931.12	\$9,079,192.74	\$110,579,269.49
Pharmacy	\$6,779,109.45	\$6,744,604.98	\$7,116,825.53	\$11,195,695.47	\$2,319,206.35	\$34,155,441.78
BIOMEDICAL & PHARMACEUTICAL SCI	\$5,426,110.45	\$5,672,398.18	\$5,287,921.40	\$8,595,883.92	\$1,420,481.60	\$26,402,795.55
CRIME LAB	\$686,597.00	\$701,464.00	\$705,422.53	\$812,676.00	\$775,000.00	\$3,681,159.53
DEAN'S OFFICE	\$0.00	\$0.00	\$0.00	\$0.00	\$0.00	\$0.00
ELDERLY MEDICATION	NA	NA	NA	NA	\$20,000.00	\$20,000.00
PHARMACY PRACTICE	\$666,402.00	\$370,742.80	\$1,123,481.60	\$1,787,135.55	\$103,724.75	\$4,051,486.70
University College	\$84,568.00	\$85,160.00	\$95,521.00	\$96,550.00	\$89,915.00	\$451,714.00

NA - Not Applicable (department did not exist or was in another college)

<u>College</u>	<u>FY07</u>	<u>FY08</u>	<u>FY09</u>	<u>FY10</u>	<u>FY11 YTD</u>	<u>Totals</u>
University Library	\$0.00	\$14,212.00	\$0.00	\$3,900.00	\$0.00	\$18,112.00

Table 3b. Awards received by units within administrative divisions FY07 through October FY11

<u>Administrative Unit</u>	<u>FY07</u>	<u>FY08</u>	<u>FY09</u>	<u>FY10</u>	<u>FY11 YTD</u>	<u>Totals</u>
President's Office	\$0.00	\$4,320.00	\$0.00	\$0.00	\$2,900.00	\$7,220.00
Provost	\$3,011.60	\$22,500.00	\$22,594.29	\$1,306,675.00	\$48,742.65	\$1,403,523.54
ADVANCE OFFICE	\$0.00	\$22,500.00	\$7,500.00	\$10,000.00	\$0.00	\$40,000.00
LABOR RESEARCH CENTER	NA	NA	\$15,094.29	\$19,600.00	\$0.00	\$34,694.29
NETWORK AND TELECOM SERVICES	\$0.00	\$0.00	\$0.00	\$924,858.00	\$0.00	\$924,858.00
PROVOST	\$3,011.60	\$0.00	\$0.00	\$352,217.00	\$48,742.65	\$403,971.25
VP, Administration	\$356,399.00	\$1,323,775.20	\$3,847,613.58	\$13,879,383.50	\$738,003.50	\$20,145,174.78
TRANSPORTATION CENTER	\$356,399.00	\$1,323,775.20	\$1,915,830.58	\$1,354,101.50	\$658,751.40	\$5,608,857.68
VICE PRESIDENT FOR ADMINISTRATION	\$0.00	\$0.00	\$1,931,783.00	\$12,525,282.00	\$79,252.10	\$14,536,317.10
VP, Research & Economic Development	\$131,299.00	\$0.00	\$0.00	\$2,512,500.00	\$8,072,900.00	\$10,716,699.00
NEAGEP	\$131,299.00	\$0.00	\$0.00	\$0.00	\$0.00	\$131,299.00
VP, RES & ECONOMIC DEVELOPMENT	\$0.00	\$0.00	\$0.00	\$2,512,500.00	\$8,072,900.00	\$10,585,400.00
VP, Student Affairs	\$652,222.00	\$287,357.80	\$498,340.56	\$151,422.90	\$0.00	\$1,589,343.26
CAMPUS LIFE	\$47,106.00	\$149,989.00	\$0.00	\$0.00	\$0.00	\$197,095.00
HEALTH SERVICES	\$12,830.00	\$0.00	\$10,800.00	\$0.00	\$0.00	\$23,630.00
STUDENT LIFE	\$592,286.00	\$0.00	\$179,630.19	\$151,422.90	\$0.00	\$923,339.09
TALENT DEVELOPMENT	\$0.00	\$137,368.80	\$307,910.37	\$0.00	\$0.00	\$445,279.17

NA - Not Applicable (unit did not exist or was in another division)

Table 4. Facilities and Administrative Funds received FY07 through October FY11

	FY07		FY08	
	F&A Received		F&A Received	
Month	Amount	Cum. Amt.	Amount	Cum. Amt.
July	\$766,178.29	\$766,178.29	\$864,515.94	\$864,515.94
August	\$1,127,889.08	\$1,894,067.37	\$1,097,698.98	\$1,962,214.92
September	\$765,084.91	\$2,659,152.28	\$714,393.48	\$2,676,608.40
October	\$728,186.96	\$3,387,339.24	\$785,512.17	\$3,462,120.57
November	\$832,482.74	\$4,219,821.98	\$987,641.06	\$4,449,761.63
December	\$842,140.46	\$5,061,962.44	\$636,370.60	\$5,086,132.23
January	\$699,178.17	\$5,761,140.61	\$658,082.99	\$5,744,215.22
February	\$730,058.81	\$6,491,199.42	\$728,895.70	\$6,473,110.92
March	\$746,722.34	\$7,237,921.76	\$678,111.96	\$7,151,222.88
April	\$738,507.99	\$7,976,429.75	\$797,892.59	\$7,949,115.47
May	\$1,022,970.37	\$8,999,400.12	\$963,196.95	\$8,912,312.42
June	\$1,641,518.88	\$10,640,919.00	\$1,754,055.05	\$10,666,367.47
Total	\$10,640,919.00	\$10,640,919.00	\$10,666,367.47	\$10,666,367.47

	FY09		FY10		FY11	
	F&A Received		F&A Received		F&A Received	
Month	Amount	Cum. Amt.	Amount	Cum. Amt.	Amount	Cum. Amt.
July	\$698,151.33	\$698,151.33	\$796,999.29	\$796,999.29	\$779,892.86	\$779,892.86
August	\$1,170,579.13	\$1,868,730.46	\$1,605,967.25	\$2,402,966.54	\$1,499,377.04	\$2,279,269.90
September	\$944,639.40	\$2,813,369.86	\$1,085,066.61	\$3,488,033.15	\$1,329,645.18	\$3,608,915.08
October	\$1,084,715.03	\$3,898,084.89	\$1,252,685.25	\$4,740,718.40	\$1,335,048.35	\$4,943,963.43
November	\$766,554.38	\$4,664,639.27	\$1,044,988.01	\$5,785,706.41		
December	\$890,078.29	\$5,554,717.56	\$925,849.71	\$6,711,556.12		
January	\$739,866.95	\$6,294,584.51	\$911,837.51	\$7,623,393.63		
February	\$767,628.61	\$7,062,213.12	\$900,051.99	\$8,523,445.62		
March	\$816,801.58	\$7,879,014.70	\$1,000,005.97	\$9,523,451.59		
April	\$1,002,588.07	\$8,881,602.77	\$1,321,778.00	\$10,845,229.59		
May	\$1,088,259.87	\$9,969,862.64	\$866,264.85	\$11,711,494.44		
June	\$2,191,994.43	\$12,161,857.07	\$2,319,094.55	\$14,030,588.99		
Total	\$12,161,857.07	\$12,161,857.07	\$14,030,588.99	\$14,030,588.99	\$4,943,963.43	\$4,943,963.43

Figure 4. Cumulative totals of Facilities and Administrative Funds received FY07 through October FY11

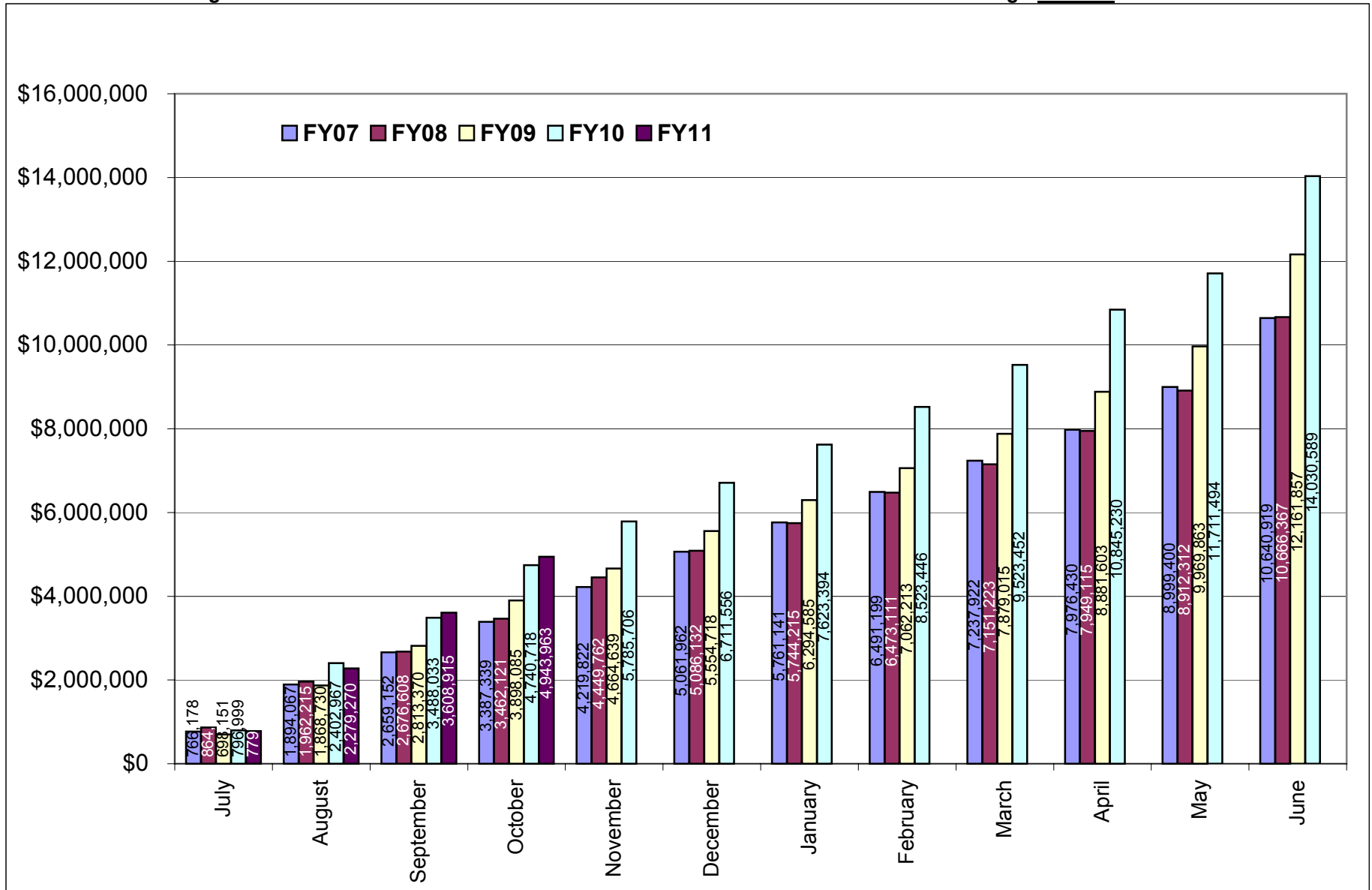


Table 5. Summary of Facilities and Administrative Funds received by administrative and academic units FY07 through October FY11

Administrative	<u>FY07</u>	<u>FY08</u>	<u>FY09</u>	<u>FY10</u>	<u>FY11 YTD</u>	<u>Totals</u>
PRESIDENT'S OFFICE	\$1.13	\$0.00	\$0.00	\$0.00	\$0.00	\$1.13
PROVOST	\$0.00	\$0.00	\$10,321.74	\$4,046.84	\$0.00	\$14,368.58
VP, ADMINISTRATION	\$222,792.85	\$195,586.48	\$286,145.81	\$281,996.32	\$103,756.39	\$1,090,277.85
VP, RESEARCH & ECONOMIC DEV	\$230,359.60	\$205,786.40	\$57,603.29	\$104,854.61	\$51,547.99	\$650,151.89
VP, STUDENT AFFAIRS	\$179,598.42	\$97,513.85	\$105,653.86	\$88,983.73	\$14,643.69	\$486,393.55
Academic						
ARTS & SCIENCES	\$1,390,620.28	\$1,606,108.04	\$2,016,328.02	\$2,324,609.05	\$813,463.09	\$8,151,128.48
BUSINESS ADMINISTRATION	\$92,017.59	\$47,837.18	\$80,815.65	\$3,264.92	\$4,469.18	\$228,404.52
CONTINUING EDUCATION	\$117.83	\$0.00	\$0.00	\$0.00	\$0.00	\$117.83
ENGINEERING	\$1,019,260.75	\$1,007,442.70	\$1,256,356.71	\$1,556,055.78	\$654,108.32	\$5,493,224.26
ENVIRONMENT & LIFE SCIENCES	\$1,660,959.07	\$1,812,703.38	\$2,192,102.97	\$2,714,462.77	\$1,022,543.62	\$9,402,771.81
GRADUATE SCHOOL	\$0.00	\$0.00	\$0.00	\$0.00	\$0.00	\$0.00
HUMAN SCIENCE & SERVICES	\$638,694.52	\$708,112.84	\$556,655.93	\$554,518.46	\$222,963.31	\$2,680,945.06
NURSING	\$67,808.30	\$61,174.29	\$127,327.24	\$43,132.24	\$55,639.31	\$355,081.38
OCEANOGRAPHY	\$4,257,758.61	\$4,045,120.50	\$4,192,315.78	\$4,938,958.67	\$1,608,935.96	\$19,043,089.52
PHARMACY	\$877,353.50	\$874,875.66	\$1,275,064.53	\$1,406,891.03	\$390,676.21	\$4,824,860.93
UNIVERSITY COLLEGE	\$3,576.55	\$4,106.15	\$4,626.40	\$4,550.01	\$1,451.29	\$18,310.40
UNIVERSITY LIBRARY	\$0.00	\$0.00	\$539.14	\$4,264.56	(\$234.93)	\$4,568.77
Totals	\$10,640,919.00	\$10,666,367.47	\$12,161,857.07	\$14,030,588.99	\$4,943,963.43	\$52,443,695.96

Note: A negative amount reflects an adjustment to the previous fiscal year.

Table 5a. Facilities and Administrative Funds received by departments within colleges FY07 through October FY11

<u>College</u>	<u>FY07</u>	<u>FY08</u>	<u>FY09</u>	<u>FY10</u>	<u>FY11 YTD</u>	<u>Totals</u>
Arts and Sciences	\$1,390,620.28	\$1,606,108.04	\$2,016,328.02	\$2,324,609.05	\$813,463.09	\$8,151,128.48
ART	\$838.04	\$808.60	\$1,410.59	\$71.08	\$0.00	\$3,128.31
CANCER PREVENTION RESEARCH CTR	\$769,490.00	\$936,294.44	\$1,191,620.62	\$1,188,565.26	\$391,254.34	\$4,477,224.66
CHEMISTRY	\$161,797.16	\$224,026.38	\$271,170.05	\$498,893.80	\$173,342.27	\$1,329,229.66
COMMUNICATION STUDIES	\$4,300.21	\$1,915.43	\$12,837.04	\$5,981.56	\$0.00	\$25,034.24
COMPUTER SCIENCE/STATISTICS	\$136,886.07	\$135,110.44	\$142,988.54	\$176,025.68	\$62,762.51	\$653,773.24
DEAN'S OFFICE	\$93,809.29	\$40,004.62	\$0.00	\$0.00	\$0.00	\$133,813.91
ECONOMICS	\$2,253.51	\$191.33	\$0.00	\$0.00	\$0.00	\$2,444.84
FEINSTEIN HUNGER CENTER (DEAN'S OFFICE)	\$0.00	\$64,704.49	\$119,697.20	\$117,445.19	\$36,285.20	\$338,132.08
HISTORY	\$24,808.97	\$7,408.66	\$14,811.26	\$6,770.79	\$963.66	\$54,763.34
LANGUAGES	\$2,598.55	\$3,061.60	\$67,887.69	\$100,337.49	\$36,744.71	\$210,630.04
LIBRARY AND INFORMATION STUDIES	\$11,027.29	\$10,085.71	\$827.28	\$0.00	\$0.00	\$21,940.28
MATHEMATICS	\$13,685.84	\$9,989.50	\$0.00	\$0.00	\$0.00	\$23,675.34
PHYSICS	\$52,607.96	\$81,557.22	\$138,494.67	\$192,309.61	\$94,217.01	\$559,186.47
PSYCHOLOGY (EXCLUDES CPRC)	\$102,022.79	\$80,776.04	\$49,875.54	\$35,708.23	\$10,965.99	\$279,348.59
SOCIOLOGY/ANTHROPOLOGY	\$12,048.35	\$9,920.76	\$4,707.54	\$2,500.36	\$6,927.40	\$36,104.41
WOMEN'S STUDIES	\$2,446.25	\$252.82	\$0.00	\$0.00	\$0.00	\$2,699.07
Business Administration	\$92,017.59	\$47,837.18	\$80,815.65	\$3,264.92	\$4,469.18	\$228,404.52
DEAN'S OFFICE	(\$0.05)	\$0.00	\$0.00	\$0.00	\$0.00	(\$0.05)
FACULTY - INSTRUCTION	\$92,017.64	\$47,837.18	\$80,815.65	\$3,264.92	\$4,469.18	\$228,404.57
RESEARCH CTR FOR BUSINESS ECONOMICS	\$0.00	\$0.00	\$0.00	\$0.00	\$0.00	\$0.00

Note: A negative amount reflects an adjustment to the previous fiscal year.

<u>College</u>	<u>FY07</u>	<u>FY08</u>	<u>FY09</u>	<u>FY10</u>	<u>FY11 YTD</u>	<u>Totals</u>
Continuing Education	\$117.83	\$0.00	\$0.00	\$0.00	\$0.00	\$117.83
BIOTECH MANUFACTURING PROVIDENCE	\$0.00	\$0.00	\$0.00	\$0.00	\$0.00	\$0.00
LABOR RESEARCH CENTER	\$117.83	\$0.00	NA	NA	NA	\$117.83
<hr/>						
Engineering	\$1,019,260.75	\$1,007,442.70	\$1,256,356.71	\$1,556,055.78	\$654,108.32	\$5,493,224.26
CHEMICAL ENGINEERING	\$203,950.58	\$213,852.81	\$287,771.39	\$320,788.43	\$143,935.20	\$1,170,298.41
CIVIL/ENVIRONMENTAL ENGINEERING	\$38,581.43	\$49,919.59	\$52,401.77	\$55,281.21	\$23,995.80	\$220,179.80
DEAN'S OFFICE	\$1,037.02	\$660.04	\$0.00	\$0.00	\$0.00	\$1,697.06
ELECTRICAL ENGINEERING	\$169,750.81	\$128,124.96	\$146,950.95	\$253,753.28	\$135,492.76	\$834,072.76
MECHANICAL AND INDUSTRIAL SYSTEMS EGR	\$414,017.11	\$445,359.44	\$591,110.88	\$665,759.87	\$279,065.06	\$2,395,312.36
OCEAN ENGINEERING	\$191,923.80	\$169,525.86	\$178,121.72	\$260,472.99	\$71,619.50	\$871,663.87
<hr/>						
Environment & Life Sciences	\$1,660,959.07	\$1,812,703.38	\$2,192,102.97	\$2,714,462.77	\$1,022,543.62	\$9,402,771.81
AGRICULTURAL EXPERIMENT STATION	\$0.00	\$0.00	\$0.00	\$23.28	\$0.00	\$23.28
BIOLOGICAL SCIENCES	\$124,441.45	\$133,502.71	\$148,526.66	\$164,996.86	\$62,804.63	\$634,272.31
CELL AND MOLECULAR BIOLOGY	\$199,669.09	\$179,411.16	\$269,949.88	\$816,959.06	\$341,448.50	\$1,807,437.69
COMMUNITY PLANNING/AREA DEVEL	\$6,504.68	\$14,574.67	\$17,033.93	\$8,112.87	\$1,471.31	\$47,697.46
COOPERATIVE EXTENSION	\$16,479.70	\$28,725.14	\$24,629.56	\$12,622.00	\$1,863.61	\$84,320.01
DEAN'S OFFICE	\$76,131.76	\$158,549.59	\$240,746.08	\$53,164.38	\$17,388.43	\$545,980.24
ENV & NAT RESOURCE ECONOMICS	\$132,986.53	\$131,042.54	\$105,626.63	\$108,722.27	\$55,690.91	\$534,068.88
FISHERIES, ANIMAL & VET SCIENCE	\$159,958.57	\$216,632.99	\$209,572.99	\$241,245.33	\$80,336.37	\$907,746.25
GEOSCIENCE	\$59,995.68	\$69,993.79	\$204,787.30	\$179,215.61	\$77,882.48	\$591,874.86
MARINE AFFAIRS	\$46,240.28	\$58,233.40	\$42,732.60	\$41,846.88	\$21,479.44	\$210,532.60
NATURAL RESOURCES SCIENCE	\$376,677.28	\$390,050.86	\$467,152.38	\$642,942.48	\$231,097.56	\$2,107,920.56
NUTRITION AND FOOD SCIENCES	\$196,090.36	\$229,778.83	\$239,792.86	\$268,520.89	\$80,355.69	\$1,014,538.63
PLANT SCIENCE	\$265,783.69	\$202,207.70	\$221,552.10	\$176,090.86	\$50,724.69	\$916,359.04

NA - Not Applicable (department did not exist or was in another college)

<u>College</u>	<u>FY07</u>	<u>FY08</u>	<u>FY09</u>	<u>FY10</u>	<u>FY11 YTD</u>	<u>Totals</u>
Graduate School	\$0.00	\$0.00	\$0.00	\$0.00	\$0.00	\$0.00
Human Science & Services	\$638,694.52	\$708,112.84	\$556,655.93	\$554,518.46	\$222,963.31	\$2,680,945.06
COMMUNICATIVE DISORDERS	\$81,483.63	\$52,452.04	\$9,254.68	\$5,573.47	\$300.14	\$149,063.96
DEAN'S OFFICE	\$0.00	\$0.00	\$0.00	\$22,160.80	\$6,521.53	\$28,682.33
EDUCATION	\$307,206.01	\$317,565.45	\$302,851.11	\$275,506.68	\$143,049.47	\$1,346,178.72
EDUCATION & SOCIAL POLICY RESEARCH	\$82,676.54	\$70,549.36	\$31,916.31	\$4,929.86	(\$17.49)	\$190,054.58
GERONTOLOGY	\$69,483.11	\$135,996.87	\$130,657.12	\$145,444.08	\$49,657.15	\$531,238.33
HUMAN DEV/COUNSEL/FAM STUDIES	\$17,628.46	\$6,042.13	\$12,273.25	\$24,936.14	\$8,758.77	\$69,638.75
KINESIOLOGY	\$13,758.82	\$4,670.32	\$6,850.47	\$8,533.64	\$3,254.56	\$37,067.81
PHYSICAL THERAPY	\$48,930.88	\$108,764.97	\$58,466.83	\$54,768.23	\$9,977.75	\$280,908.66
TEACHER EDUCATION	\$0.00	\$0.00	\$0.00	\$0.00	\$0.00	\$0.00
TEXTILES/FASHION MERCHAND/DESIGN	\$17,527.07	\$12,071.70	\$4,386.16	\$12,665.56	\$1,461.43	\$48,111.92
Nursing	\$67,808.30	\$61,174.29	\$127,327.24	\$43,132.24	\$55,639.31	\$355,081.38
Oceanography	\$4,257,758.61	\$4,045,120.50	\$4,192,315.78	\$4,938,958.67	\$1,608,935.96	\$19,043,089.52
Pharmacy	\$877,353.50	\$874,875.66	\$1,275,064.53	\$1,406,891.03	\$390,676.21	\$4,824,860.93
APPLIED PHARMACEUTICAL SCIENCES	(\$242.44)	NA	NA	NA	NA	(\$242.44)
BIOMEDICAL AND PHARMACEUTICAL SCIENCES	\$828,252.37	\$816,361.91	\$1,172,414.34	\$1,252,068.63	\$353,916.67	\$4,423,013.92
BIOMEDICAL SCIENCES	(\$74.10)	NA	NA	NA	NA	(\$74.10)
DEAN'S OFFICE	\$35,276.89	\$24,549.27	\$19,332.93	\$0.00	\$0.00	\$79,159.09
ELDERLY MEDICATION	(\$72.32)	NA	NA	NA	NA	(\$72.32)
PHARMACY PRACTICE	\$14,213.10	\$33,964.48	\$83,317.26	\$154,822.40	\$36,759.54	\$323,076.78

NA - Not Applicable (department did not exist or was in another college)

Note: A negative amount reflects an adjustment to the previous fiscal year.

<u>College</u>	<u>FY07</u>	<u>FY08</u>	<u>FY09</u>	<u>FY10</u>	<u>FY11 YTD</u>	<u>Totals</u>
University College	\$3,576.55	\$4,106.15	\$4,626.40	\$4,550.01	\$1,451.29	\$18,310.40
University Library	\$0.00	\$0.00	\$539.14	\$4,264.56	(\$234.93)	\$4,568.77

Table 5b. Facilities and Administrative Funds received by units within administrative divisions FY07 through October FY11

<u>Administrative Unit</u>	<u>FY07</u>	<u>FY08</u>	<u>FY09</u>	<u>FY10</u>	<u>FY11 YTD</u>	<u>Totals</u>
President's Office	\$1.13	\$0.00	\$0.00	\$0.00	\$0.00	\$1.13
Provost	\$0.00	\$0.00	\$10,321.74	\$4,046.84	\$0.00	\$14,368.58
ADVANCE OFFICE	\$0.00	\$0.00	\$8,685.44	\$136.36	\$0.00	\$8,821.80
LABOR RESEARCH CENTER	NA	NA	\$1,636.30	\$3,910.48	\$0.00	\$5,546.78
PROVOST	\$0.00	\$0.00	\$0.00	\$0.00	\$0.00	\$0.00
VP, Administration	\$222,792.85	\$195,586.48	\$286,145.81	\$281,996.32	\$103,756.39	\$1,090,277.85
TRANSPORTATION CENTER	\$222,792.85	\$195,586.48	\$256,921.25	\$221,689.61	\$84,175.65	\$981,165.84
VICE PRESIDENT FOR ADMINISTRATION	\$0.00	\$0.00	\$29,224.56	\$60,306.71	\$19,580.74	\$109,112.01
VP, Research & Economic Development (includes NEAGEP)	\$230,359.60	\$205,786.40	\$57,603.29	\$104,854.61	\$51,547.99	\$650,151.89
VP, Student Affairs	\$179,598.42	\$97,513.85	\$105,653.86	\$88,983.73	\$14,643.69	\$486,393.55
CAMPUS LIFE	\$12,408.49	\$25,128.56	\$22,585.53	\$15,095.17	\$2,786.33	\$78,004.08
HEALTH SERVICES	\$0.00	\$0.00	\$0.00	\$0.00	\$0.00	\$0.00
STUDENT LIFE	\$142,013.25	\$39,429.93	\$29,185.49	\$33,451.67	\$222.46	\$244,302.80
TALENT DEVELOPMENT	\$25,176.68	\$32,955.36	\$53,882.84	\$40,436.89	\$11,634.90	\$164,086.67

NA - Not Applicable (unit did not exist or was in another division)